

Datasheet for ABIN5692915
anti-PRDM1 antibody (AA 1-230)

8 Images

[Go to Product page](#)

Overview

| | |
|----------------------|--|
| Quantity: | 100 µg |
| Target: | PRDM1 |
| Binding Specificity: | AA 1-230 |
| Reactivity: | Human, Mouse, Rat |
| Host: | Rabbit |
| Clonality: | Polyclonal |
| Conjugate: | This PRDM1 antibody is un-conjugated |
| Application: | Western Blotting (WB), ELISA, Immunohistochemistry (IHC) |

Product Details

| | |
|-----------------------------|--|
| Brand: | Picoband™ |
| Immunogen: | E. coli-derived human PRDM1/Blimp1 recombinant protein (Position: M1-Q230). |
| Cross-Reactivity (Details): | No cross reactivity with other proteins. |
| Characteristics: | Rabbit IgG polyclonal antibody for PRDM1/Blimp1 detection. Tested with WB, IHC-P, Direct ELISA in Human, Mouse, Rat. |

Target Details

| | |
|-------------------|--|
| Target: | PRDM1 |
| Alternative Name: | PRDM1 (PRDM1 Products) |
| Background: | Synonyms: PR domain zinc finger protein 1, BLIMP-1, Beta-interferon gene positive regulatory |

Target Details

domain I-binding factor, PR domain-containing protein 1, Positive regulatory domain I-binding factor 1, PRDI-BF1, PRDI-binding factor 1, PRDM1, BLIMP1

Background: PR domain zinc finger protein 1 also known as BLIMP-1 is a protein that in humans is encoded by the PRDM1 gene. This gene encodes a protein that acts as a repressor of beta-interferon gene expression. The protein binds specifically to the PRDI (positive regulatory domain I element) of the beta-IFN gene promoter. Transcription of this gene increases upon virus induction. Two alternatively spliced transcript variants that encode different isoforms have been reported.

UniProt: [O75626](#)

Pathways: [Regulation of Muscle Cell Differentiation](#)

Application Details

Application Notes: Recommended Detection Systems: Enhanced Chemiluminescent Kit with anti-Rabbit IgG (ABIN921124) for Western blot.

Application Details: Western blot, 0.1-0.5 µg/mL

Immunohistochemistry(Paraffin-embedded Section), 0.5-1 µg/mL

Direct ELISA, 0.1-0.5 µg/mL

Restrictions: For Research Use only

Handling

Format: Lyophilized

Reconstitution: Add 0.2 mL of distilled water will yield a concentration of 500 µg/mL.

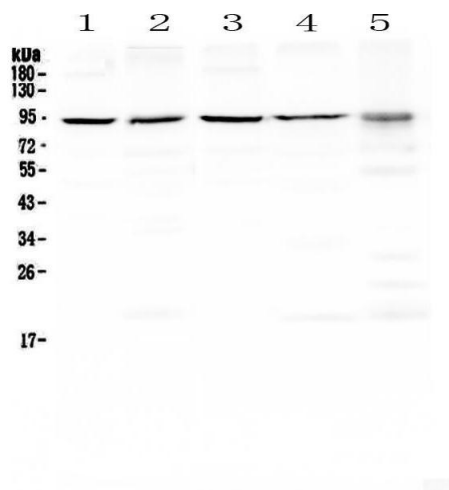
Buffer: Each vial contains 4 mg Trehalose, 0.9 mg NaCl, 0.2 mg Na₂HPO₄, 0.05 mg NaN₃.

Preservative: Sodium azide

Precaution of Use: This product contains Sodium azide: a POISONOUS AND HAZARDOUS SUBSTANCE which should be handled by trained staff only.

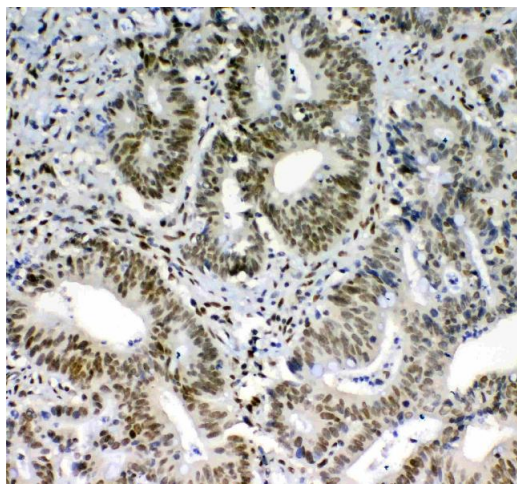
Storage: 4 °C, -20 °C

Storage Comment: At -20°C for one year. After reconstitution, at 4°C for one month.
It can also be aliquotted and stored frozen at -20°C for a longer time. Avoid repeated freezing and thawing.



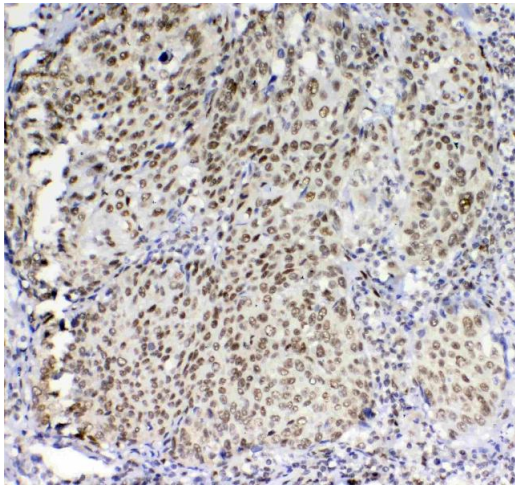
Western Blotting

Image 1. Western blot analysis of PRDM1/Blimp1 using anti-PRDM1/Blimp1 antibody. Electrophoresis was performed on a 5-20% SDS-PAGE gel at 70V (Stacking gel) / 90V (Resolving gel) for 2-3 hours. The sample well of each Lane was loaded with 50ug of sample under reducing conditions. Lane 1: human Hela whole cell lysates, Lane 2: human A549 whole cell lysates, Lane 3: human 293T whole cell lysates, Lane 4: human MCF-7 whole cell lysates, Lane 5: human 22RV1 whole cell lysates. After Electrophoresis, proteins were transferred to a Nitrocellulose membrane at 150mA for 50-90 minutes. Blocked the membrane with 5% Non-fat Milk/ TBS for 1.5 hour at RT. The membrane was incubated with rabbit anti-PRDM1/Blimp1 antigen affinity purified polyclonal antibody (Catalog #) at 0.5 µg/mL overnight at 4°C, then washed with TBS-0.1%Tween 3 times with 5 minutes each and probed with a goat anti-rabbit IgG-HRP secondary antibody at a dilution of 1:10000 for 1.5 hour at RT. The signal is developed using an Enhanced Chemiluminescent detection (ECL) kit (Catalog # EK1002) with Tanon 5200 system. A specific band was detected for PRDM1/Blimp1 at approximately 92KD. The expected band size for PRDM1/Blimp1 is at 92KD.



Immunohistochemistry

Image 2. IHC analysis of PRDM1/Blimp1 using anti-PRDM1/Blimp1 antibody. PRDM1/Blimp1 was detected in paraffin-embedded section of human colon cancer tissue. Heat mediated antigen retrieval was performed in citrate buffer (pH6, epitope retrieval solution) for 20 mins. The tissue section was blocked with 10% goat serum. The tissue section was then incubated with 1µg/ml rabbit anti-PRDM1/Blimp1 Antibody overnight at 4°C. Biotinylated goat anti-rabbit IgG was used as secondary antibody and incubated for 30 minutes at 37°C. The tissue section was



developed using Streptavidin-Biotin-Complex (SABC)(Catalog # SA1022) with DAB as the chromogen.

Immunohistochemistry

Image 3. IHC analysis of PRDM1/Blimp1 using anti-PRDM1/Blimp1 antibody. PRDM1/Blimp1 was detected in paraffin-embedded section of human lung cancer tissue. Heat mediated antigen retrieval was performed in citrate buffer (pH6, epitope retrieval solution) for 20 mins. The tissue section was blocked with 10% goat serum. The tissue section was then incubated with 1µg/ml rabbit anti-PRDM1/Blimp1 Antibody overnight at 4°C. Biotinylated goat anti-rabbit IgG was used as secondary antibody and incubated for 30 minutes at 37°C. The tissue section was developed using Streptavidin-Biotin-Complex (SABC)(Catalog # SA1022) with DAB as the chromogen.

Please check the [product details page](#) for more images. Overall 8 images are available for ABIN5692915.