

Datasheet for ABIN5692927
anti-RAB27A antibody (AA 98-216)

6 Images

[Go to Product page](#)

Overview

Quantity:	100 µg
Target:	RAB27A
Binding Specificity:	AA 98-216
Reactivity:	Human, Mouse, Rat
Host:	Rabbit
Clonality:	Polyclonal
Conjugate:	This RAB27A antibody is un-conjugated
Application:	Western Blotting (WB), ELISA, Immunohistochemistry (IHC), Flow Cytometry (FACS), Immunocytochemistry (ICC)

Product Details

Brand:	Picoband™
Immunogen:	E. coli-derived human RAB27A recombinant protein (Position: L98-K216).
Cross-Reactivity (Details):	No cross reactivity with other proteins.
Characteristics:	Rabbit IgG polyclonal antibody for RAB27A detection. Tested with WB, IHC-P, IHC-F, ICC, FCM, Direct ELISA in Human, Mouse, Rat.

Target Details

Target:	RAB27A
Alternative Name:	RAB27A (RAB27A Products)

Target Details

Background:	<p>Synonyms: Ras-related protein Rab-27A, Rab-27, GTP-binding protein Ram, RAB27A, RAB27</p> <p>Tissue Specificity: Found in all the examined tissues except in brain. Low expression was found in thymus, kidney, muscle and placenta. Detected in melanocytes, and in most tumor cell lines examined. Expressed in cytotoxic T-lymphocytes (CTL) and mast cells.</p> <p>Background: Ras-related protein Rab-27A is a protein that in humans is encoded by the RAB27A gene. The protein encoded by this gene belongs to the small GTPase superfamily, Rab family. The protein is membrane-bound and may be involved in protein transport and small GTPase mediated signal transduction. Mutations in this gene are associated with Griscelli syndrome type 2. Alternative splicing occurs at this locus and four transcript variants encoding the same protein have been identified.</p>
UniProt:	P51159
Pathways:	Peptide Hormone Metabolism

Application Details

Application Notes:	<p>Recommended Detection Systems: Enhanced Chemiluminescent Kit with anti-Rabbit IgG (ABIN921124) for Western blot, and HRP Conjugated anti-Rabbit IgG Super Vision Assay Kit (SV0002-1) for IHC(P), IHC(F) and ICC.</p> <p>Application Details: Western blot, 0.1-0.5 µg/mL</p> <p>Immunohistochemistry(Paraffin-embedded Section), 0.5-1 µg/mL</p> <p>Immunohistochemistry(Frozen Section), 0.5-1 µg/mL</p> <p>Immunocytochemistry, 0.5-1 µg/mL</p> <p>Flow Cytometry, 1-3 µg/1x10⁶ cells Direct ELISA, 0.1-0.5 µg/mL</p>
Restrictions:	For Research Use only

Handling

Format:	Lyophilized
Reconstitution:	Add 0.2 mL of distilled water will yield a concentration of 500 µg/mL.
Buffer:	Each vial contains 4 mg Trehalose, 0.9 mg NaCl, 0.2 mg Na ₂ HPO ₄ , 0.05 mg NaN ₃ .
Preservative:	Sodium azide
Precaution of Use:	This product contains Sodium azide: a POISONOUS AND HAZARDOUS SUBSTANCE which should be handled by trained staff only.
Storage:	4 °C, -20 °C

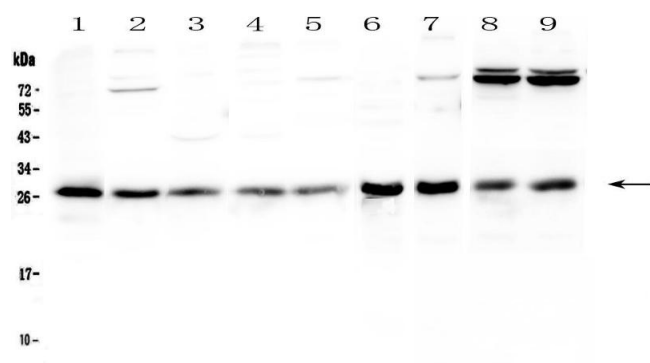
Handling

Storage Comment:

At -20°C for one year. After reconstitution, at 4°C for one month.

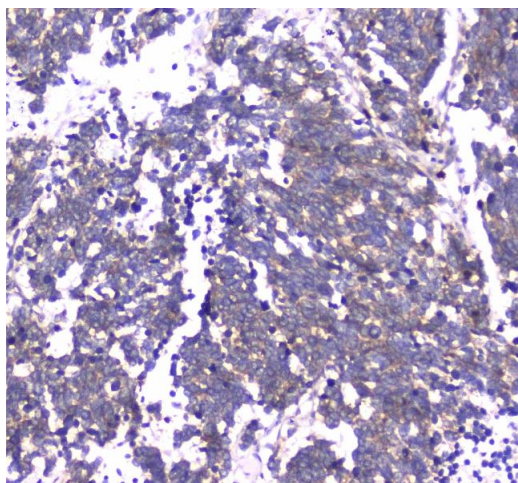
It can also be aliquotted and stored frozen at -20°C for a longer time. Avoid repeated freezing and thawing.

Images



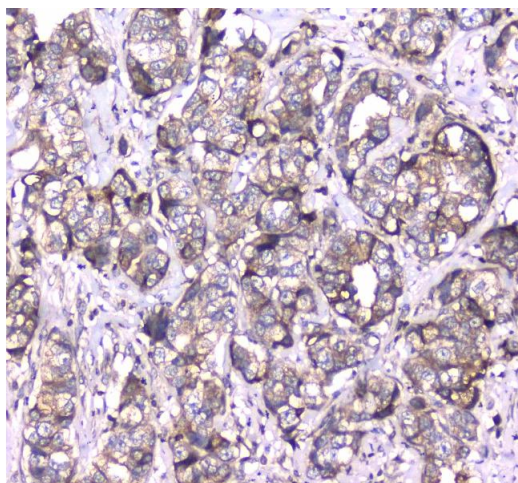
Western Blotting

Image 1. Western blot analysis of RAB27A using anti-RAB27A antibody . Electrophoresis was performed on a 5-20% SDS-PAGE gel at 70V (Stacking gel) / 90V (Resolving gel) for 2-3 hours. The sample well of each Lane was loaded with 50ug of sample under reducing conditions. Lane 1: human Hela whole cell lysates, Lane 2: human Jurkat whole cell lysates, Lane 3: human MCF-7 whole cell lysates, Lane 4: human HepG2 whole cell lysates, Lane 5: human A549 whole cell lysates, Lane 6: rat stomach tissue lysates, Lane 7: rat thymus tissue lysates, Lane 8: mouse thymus tissue lysates, Lane 9: mouse NIH3T3 whole cell lysates. After Electrophoresis, proteins were transferred to a Nitrocellulose membrane at 150mA for 50-90 minutes. Blocked the membrane with 5% Non-fat Milk/ TBS for 1.5 hour at RT. The membrane was incubated with rabbit anti-RAB27A antigen affinity purified polyclonal antibody (Catalog #) at 0.5 µg/mL overnight at 4°C, then washed with TBS-0.1%Tween 3 times with 5 minutes each and probed with a goat anti-rabbit IgG-HRP secondary antibody at a dilution of 1:10000 for 1.5 hour at RT. The signal is developed using an Enhanced Chemiluminescent detection (ECL) kit (Catalog # EK1002) with Tanon 5200 system. A specific band was detected for RAB27A at approximately 27KD. The expected band size for RAB27A is at 25KD.



Immunohistochemistry

Image 2. IHC analysis of RAB27A using anti-RAB27A antibody . RAB27A was detected in paraffin-embedded section of human lung cancer tissue. Heat mediated antigen retrieval was performed in citrate buffer (pH6, epitope retrieval solution) for 20 mins. The tissue section was blocked with 10% goat serum. The tissue section was then incubated with 1µg/ml rabbit anti-RAB27A Antibody overnight at 4°C. Biotinylated goat anti-rabbit IgG was used as secondary antibody and incubated for 30 minutes at 37°C. The tissue section was developed using Streptavidin-Biotin-Complex (SABC)(Catalog # SA1022) with DAB as the chromogen.



Immunohistochemistry

Image 3. IHC analysis of RAB27A using anti-RAB27A antibody . RAB27A was detected in paraffin-embedded section of human mammary cancer tissue. Heat mediated antigen retrieval was performed in citrate buffer (pH6, epitope retrieval solution) for 20 mins. The tissue section was blocked with 10% goat serum. The tissue section was then incubated with 1µg/ml rabbit anti-RAB27A Antibody overnight at 4°C. Biotinylated goat anti-rabbit IgG was used as secondary antibody and incubated for 30 minutes at 37°C. The tissue section was developed using Streptavidin-Biotin-Complex (SABC)(Catalog # SA1022) with DAB as the chromogen.

Please check the [product details page](#) for more images. Overall 6 images are available for ABIN5692927.