

Datasheet for ABIN5692955

anti-BCMA antibody (AA 1-54)[Go to Product page](#)**2** Images

Overview

Quantity:	100 µg
Target:	BCMA (TNFRSF17)
Binding Specificity:	AA 1-54
Reactivity:	Human
Host:	Rabbit
Clonality:	Polyclonal
Conjugate:	This BCMA antibody is un-conjugated
Application:	Western Blotting (WB), ELISA, Immunohistochemistry (IHC)

Product Details

Brand:	Picoband™
Immunogen:	E. coli-derived human BCMA recombinant protein (Position: M1-A54).
Cross-Reactivity (Details):	No cross reactivity with other proteins.
Characteristics:	Rabbit IgG polyclonal antibody for BCMA detection. Tested with WB, IHC-P, ELISA(Cap) in Human.

Target Details

Target:	BCMA (TNFRSF17)
Alternative Name:	TNFRSF17 (TNFRSF17 Products)
Background:	Synonyms: Tumor necrosis factor receptor superfamily member 17, B-cell maturation protein,

Target Details

CD269, TNFRSF17, BCM, BCMA

Tissue Specificity: Expressed in mature B-cells, but not in T- cells or monocytes.

Background: B-cell maturation antigen (BCMA or BCM), also known as tumor necrosis factor receptor superfamily member 17 (TNFRSF17), is a protein that in humans is encoded by the TNFRSF17 gene. The protein encoded by this gene is a member of the TNF-receptor superfamily. This receptor is preferentially expressed in mature B lymphocytes, and may be important for B cell development and autoimmune response. This receptor has been shown to specifically bind to the tumor necrosis factor (ligand) superfamily, member 13b (TNFSF13B/TALL-1/BAFF), and to lead to NF-kappaB and MAPK8/JNK activation. This receptor also binds to various TRAF family members, and thus may transduce signals for cell survival and proliferation.

UniProt: [Q02223](#)

Application Details

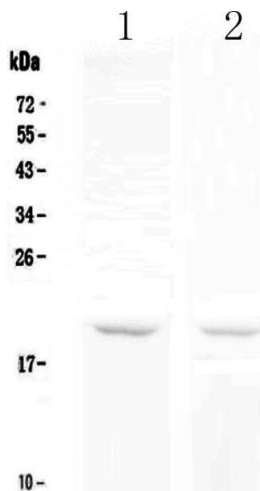
Application Notes:	Recommended Detection Systems: Enhanced Chemiluminescent Kit with anti-Rabbit IgG (ABIN921124) for Western blot, and HRP Conjugated anti-Rabbit IgG Super Vision Assay Kit (SV0002-1) for IHC(P). Application Details: Western blot, 0.1-0.5 µg/mL Immunohistochemistry(Paraffin-embedded Section), 0.5-1 µg/mL ELISA(Cap), 1-5 µg/mL
Restrictions:	For Research Use only

Handling

Format:	Lyophilized
Reconstitution:	Add 0.2 mL of distilled water will yield a concentration of 500 µg/mL.
Buffer:	Each vial contains 4 mg Trehalose, 0.9 mg NaCl, 0.2 mg Na ₂ HPO ₄ , 0.05 mg NaN ₃ .
Preservative:	Sodium azide
Precaution of Use:	This product contains Sodium azide: a POISONOUS AND HAZARDOUS SUBSTANCE which should be handled by trained staff only.
Storage:	4 °C,-20 °C
Storage Comment:	At -20°C for one year. After reconstitution, at 4°C for one month. It can also be aliquotted and stored frozen at -20°C for a longer time. Avoid repeated freezing

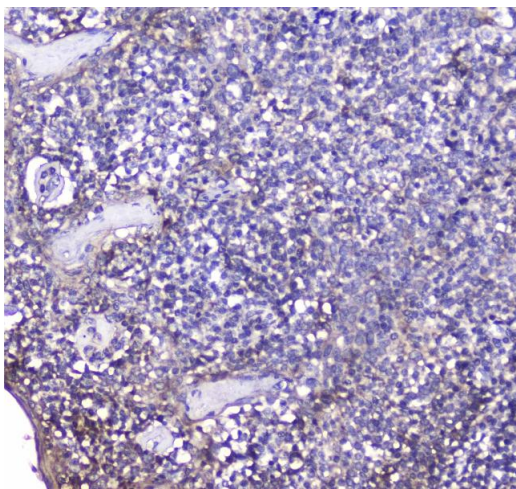
and thawing.

Images



Western Blotting

Image 1. Western blot analysis of BCMA using anti-BCMA antibody . Electrophoresis was performed on a 5-20% SDS-PAGE gel at 70V (Stacking gel) / 90V (Resolving gel) for 2-3 hours. The sample well of each Lane was loaded with 50ug of sample under reducing conditions. Lane 1: human Raji whole cell lysates, Lane 2: human Jurkat whole cell lysates. After Electrophoresis, proteins were transferred to a Nitrocellulose membrane at 150mA for 50-90 minutes. Blocked the membrane with 5% Non-fat Milk/ TBS for 1.5 hour at RT. The membrane was incubated with rabbit anti-BCMA antigen affinity purified polyclonal antibody (Catalog #) at 0.5 µg/mL overnight at 4°C, then washed with TBS-0.1%Tween 3 times with 5 minutes each and probed with a goat anti-rabbit IgG-HRP secondary antibody at a dilution of 1:10000 for 1.5 hour at RT. The signal is developed using an Enhanced Chemiluminescent detection (ECL) kit (Catalog # EK1002) with Tanon 5200 system. A specific band was detected for BCMA at approximately 20KD. The expected band size for BCMA is at 20KD.



Immunohistochemistry

Image 2. IHC analysis of BCMA using anti-BCMA antibody . BCMA was detected in paraffin-embedded section of human tonsil tissue . Heat mediated antigen retrieval was performed in citrate buffer (pH6, epitope retrieval solution) for 20 mins. The tissue section was blocked with 10% goat serum. The tissue section was then incubated with 2µg/ml rabbit anti-BCMA Antibody overnight at 4°C. Biotinylated goat anti-rabbit IgG was used as secondary antibody and incubated for 30 minutes at 37°C. The tissue section was

developed using Streptavidin-Biotin-Complex (SABC)(Catalog # SA1022) with DAB as the chromogen.