

Datasheet for ABIN5692981  
**anti-AMOTL2 antibody (AA 401-480)**[Go to Product page](#)

## 1 Image

## Overview

Quantity:	100 µg
Target:	AMOTL2
Binding Specificity:	AA 401-480
Reactivity:	Human, Mouse, Rat
Host:	Rabbit
Clonality:	Polyclonal
Conjugate:	This AMOTL2 antibody is un-conjugated
Application:	ELISA, Western Blotting (WB)

## Product Details

Brand:	Picoband™
Immunogen:	E. coli-derived human AMOTL2 recombinant protein (Position: A401-Q480).
Cross-Reactivity (Details):	No cross reactivity with other proteins.
Characteristics:	Rabbit IgG polyclonal antibody for AMOTL2 detection. Tested with WB, Direct ELISA in Human, Mouse, Rat.

## Target Details

Target:	AMOTL2
Alternative Name:	AMOTL2 ( <a href="#">AMOTL2 Products</a> )
Background:	Synonyms: Angiomotin-like protein 2, Leman coiled-coil protein, LCCP, AMOTL2, KIAA0989

## Target Details

Background: Angiotensin-like protein 2 is a protein that in humans is encoded by the AMOTL2 gene. Angiotensin is a protein that binds angiotensin, a circulating inhibitor of the formation of new blood vessels (angiogenesis). It mediates angiotensin inhibition of endothelial cell migration and tube formation in vitro. The protein encoded by this gene is related to angiotensin and is a member of the motin protein family. Alternative splicing results in multiple transcript variants of this gene.

UniProt: [Q9Y2J4](#)

## Application Details

Application Notes: Recommended Detection Systems: Enhanced Chemiluminescent Kit with anti-Rabbit IgG (ABIN921124) for Western blot.  
Application Details: Western blot, 0.1-0.5 µg/mL  
Direct ELISA, 0.1-0.5 µg/mL

Restrictions: For Research Use only

## Handling

Format: Lyophilized

Reconstitution: Add 0.2 mL of distilled water will yield a concentration of 500 µg/mL.

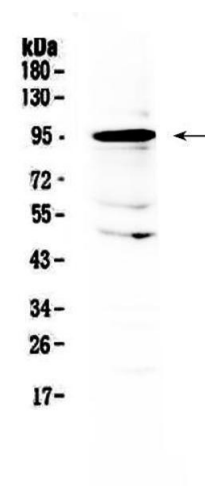
Buffer: Each vial contains 4 mg Trehalose, 0.9 mg NaCl, 0.2 mg Na<sub>2</sub>HPO<sub>4</sub>, 0.05 mg NaN<sub>3</sub>.

Preservative: Sodium azide

Precaution of Use: This product contains Sodium azide: a POISONOUS AND HAZARDOUS SUBSTANCE which should be handled by trained staff only.

Storage: 4 °C, -20 °C

Storage Comment: At -20°C for one year. After reconstitution, at 4°C for one month.  
It can also be aliquotted and stored frozen at -20°C for a longer time. Avoid repeated freezing and thawing.



### Western Blotting

**Image 1.** Western blot analysis of AMOTL2 using anti-AMOTL2 antibody. Electrophoresis was performed on a 5-20% SDS-PAGE gel at 70V (Stacking gel) / 90V (Resolving gel) for 2-3 hours. The sample well of each Lane was loaded with 50ug of sample under reducing conditions. Lane 1: human placenta tissue lysates. After Electrophoresis, proteins were transferred to a Nitrocellulose membrane at 150mA for 50-90 minutes. Blocked the membrane with 5% Non-fat Milk/ TBS for 1.5 hour at RT. The membrane was incubated with rabbit anti-AMOTL2 antigen affinity purified polyclonal antibody (Catalog # ) at 0.5 µg/mL overnight at 4°C, then washed with TBS-0.1%Tween 3 times with 5 minutes each and probed with a goat anti-rabbit IgG-HRP secondary antibody at a dilution of 1:10000 for 1.5 hour at RT. The signal is developed using an Enhanced Chemiluminescent detection (ECL) kit (Catalog # EK1002) with Tanon 5200 system. A specific band was detected for AMOTL2 at approximately 95KD. The expected band size for AMOTL2 is at 86KD.