

Datasheet for ABIN5692993

anti-CCKBR antibody



[Go to Product page](#)

2 Images

1 Publication

Overview

Quantity:	100 µg
Target:	CCKBR
Reactivity:	Human, Rat, Mouse
Host:	Rabbit
Clonality:	Polyclonal
Conjugate:	This CCKBR antibody is un-conjugated
Application:	Western Blotting (WB), Flow Cytometry (FACS), Immunocytochemistry (ICC), Immunohistochemistry (Frozen Sections) (IHC (fro))

Product Details

Brand:	Picoband™
Immunogen:	A synthetic peptide corresponding to a sequence of human CCKBR (PVYTVVQPVGPRVLQCVHRWPSARVRQTWS).
Sequence:	PVYTVVQPVG PRVLQCVHRW PSARVRQTWS
Cross-Reactivity (Details):	No cross reactivity with other proteins.
Characteristics:	Rabbit IgG polyclonal antibody for CCKBR detection. Tested with WB, IHC-F, ICC, FCM in Human, Mouse, Rat.

Target Details

Target:	CCKBR
Alternative Name:	CCKBR (CCKBR Products)

Target Details

Background:	<p>Synonyms: Gastrin/cholecystokinin type B receptor, CCK-B receptor, CCK-BR, Cholecystokinin-2 receptor, CCK2-R, CCKBR, CCKRB</p> <p>Tissue Specificity: Isoform 1 is expressed in brain, pancreas, stomach, the colon cancer cell line LoVo and the T-lymphoblastoma Jurkat, but not in heart, placenta, liver, lung, skeletal muscle, kidney or the stomach cancer cell line AGS. Expressed at high levels in the small cell lung cancer cell line NCI-H510, at lower levels in NCI-H345, NCI-H69 and GLC-28 cell lines, not expressed in GLC-19 cell line. Within the stomach, expressed at high levels in the mucosa of the gastric fundus and at low levels in the antrum and duodenum. Isoform 2 is present in pancreatic cancer cells and colorectal cancer cells, but not in normal pancreas or colonic mucosa. Isoform 3 is expressed in brain, pancreas, stomach, the stomach cancer cell line AGS and the colon cancer cell line LoVo.</p> <p>Background: The cholecystokinin B receptor, also known as CCKBR or CCK2, is a protein that in humans is encoded by the CCKBR gene. This gene encodes a G-protein coupled receptor for gastrin and cholecystokinin (CCK), regulatory peptides of the brain and gastrointestinal tract. This protein is a type B gastrin receptor, which has a high affinity for both sulfated and nonsulfated CCK analogs and is found principally in the central nervous system and the gastrointestinal tract. Alternative splicing results in multiple transcript variants. A misspliced transcript variant including an intron has been observed in cells from colorectal and pancreatic tumors.</p>
-------------	---

UniProt:	P32239
----------	------------------------

Pathways:	Positive Regulation of Peptide Hormone Secretion, Feeding Behaviour
-----------	---

Application Details

Application Notes:	<p>Recommended Detection Systems: Enhanced Chemiluminescent Kit with anti-Rabbit IgG (ABIN921124) for Western blot, and HRP Conjugated anti-Rabbit IgG Super Vision Assay Kit (SV0002-1) for IHC(F) and ICC.</p> <p>Application Details: Western blot, 0.1-0.5 µg/mL</p> <p>Immunohistochemistry(Frozen Section), 0.5-1 µg/mL, Human</p> <p>Immunocytochemistry, 0.5-1 µg/mL, Human</p> <p>Flow Cytometry, 1-3 µg/1x10⁶ cells, Human</p>
Restrictions:	For Research Use only

Handling

Format:	Lyophilized
---------	-------------

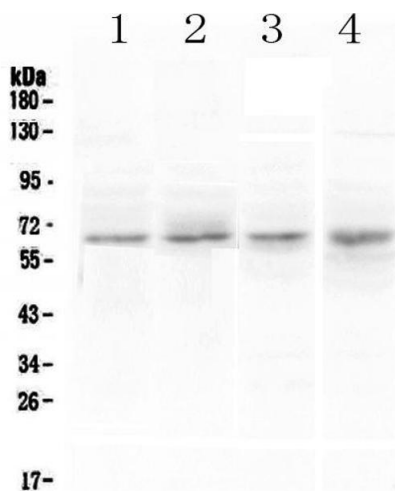
Handling

Reconstitution:	Add 0.2 mL of distilled water will yield a concentration of 500 µg/mL.
Buffer:	Each vial contains 4 mg Trehalose, 0.9 mg NaCl, 0.2 mg Na ₂ HPO ₄ , 0.05 mg NaN ₃ .
Preservative:	Sodium azide
Precaution of Use:	This product contains Sodium azide: a POISONOUS AND HAZARDOUS SUBSTANCE which should be handled by trained staff only.
Storage:	4 °C,-20 °C
Storage Comment:	At -20°C for one year. After reconstitution, at 4°C for one month. It can also be aliquotted and stored frozen at -20°C for a longer time. Avoid repeated freezing and thawing.

Publications

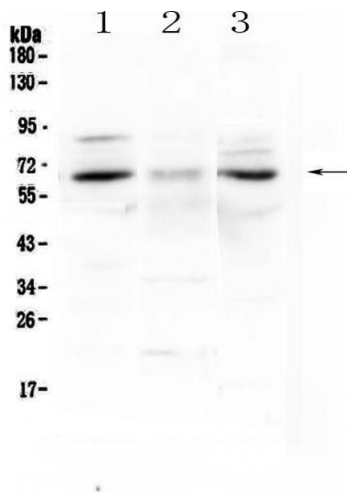
Product cited in:	Li, Huang, Liu: "Changes in FABP1 and gastrin receptor expression in the testes of rats that have undergone electrical injury." in: Experimental and therapeutic medicine , Vol. 9, Issue 6, pp. 2155-2158, (2015) (PubMed).
-------------------	---

Images



Western Blotting

Image 1. Western blot analysis of CCKBR using anti-CCKBR antibody . Electrophoresis was performed on a 5-20% SDS-PAGE gel at 70V (Stacking gel) / 90V (Resolving gel) for 2-3 hours. The sample well of each Lane was loaded with 50ug of sample under reducing conditions. Lane 1: human PANC-1 whole cell lysates, Lane 2: human U-87MG whole cell lysates, Lane 3: human COLO-320 whole cell lysates, Lane 4: human SGC-7901 whole cell lysates. After Electrophoresis, proteins were transferred to a Nitrocellulose membrane at 150mA for 50-90 minutes. Blocked the membrane with 5% Non-fat Milk/ TBS for 1.5 hour at RT. The membrane was incubated with rabbit anti-CCKBR antigen affinity purified polyclonal antibody (Catalog #) at 0.5 µg/mL overnight at 4°C, then washed with TBS-0.1%Tween 3 times with 5



minutes each and probed with a goat anti-rabbit IgG-HRP secondary antibody at a dilution of 1:10000 for 1.5 hour at RT. The signal is developed using an Enhanced Chemiluminescent detection (ECL) kit (Catalog # EK1002) with Tanon 5200 system. A specific band was detected for CCKBR at approximately 64KD. The expected band size for CCKBR is at 48KD.

Western Blotting

Image 2. Western blot analysis of CCKBR using anti-CCKBR antibody . Electrophoresis was performed on a 5-20% SDS-PAGE gel at 70V (Stacking gel) / 90V (Resolving gel) for 2-3 hours. The sample well of each Lane was loaded with 50ug of sample under reducing conditions. Lane 1: rat brain tissue lysates, Lane 2: rat stomach tissue lysates, Lane 3: mouse brain tissue lysates. After Electrophoresis, proteins were transferred to a Nitrocellulose membrane at 150mA for 50-90 minutes. Blocked the membrane with 5% Non-fat Milk/ TBS for 1.5 hour at RT. The membrane was incubated with rabbit anti-CCKBR antigen affinity purified polyclonal antibody (Catalog #) at 0.5 µg/mL overnight at 4°C, then washed with TBS-0.1%Tween 3 times with 5 minutes each and probed with a goat anti-rabbit IgG-HRP secondary antibody at a dilution of 1:10000 for 1.5 hour at RT. The signal is developed using an Enhanced Chemiluminescent detection (ECL) kit (Catalog # EK1002) with Tanon 5200 system. A specific band was detected for CCKBR at approximately 64KD. The expected band size for CCKBR is at 48KD.