

Datasheet for ABIN5693017
anti-STUB1 antibody (AA 51-303)[Go to Product page](#)

4 Images

Overview

Quantity:	100 µg
Target:	STUB1
Binding Specificity:	AA 51-303
Reactivity:	Human, Mouse, Rat
Host:	Rabbit
Clonality:	Polyclonal
Application:	Western Blotting (WB), ELISA, Immunohistochemistry (IHC)

Product Details

Brand:	Picoband™
Immunogen:	E. coli-derived human STUB1 recombinant protein (Position: R51-Y303).
Cross-Reactivity (Details):	No cross reactivity with other proteins.
Characteristics:	Rabbit IgG polyclonal antibody for STUB1 detection. Tested with WB, IHC-P, Direct ELISA in Human, Mouse, Rat.

Target Details

Target:	STUB1
Alternative Name:	STUB1 (STUB1 Products)
Background:	Synonyms: E3 ubiquitin-protein ligase CHIP Tissue Specificity: Highly expressed in skeletal muscle, heart, pancreas, brain and placenta. Detected in kidney, liver and lung.

Target Details

Background: STUB1 (STIP1 homology and U-Box containing protein 1), also known as CHIP (C terminus of HSC70-Interacting Protein), is a human gene. This gene encodes a protein containing tetratricopeptide repeat and a U-box that functions as a ubiquitin ligase/cochaperone. The encoded protein binds to and ubiquitinates shock cognate 71 kDa protein (Hspa8) and DNA polymerase beta (Polb), among other targets. Mutations in this gene cause spinocerebellar ataxia, autosomal recessive 16. Alternative splicing results in multiple transcript variants. There is a pseudogene for this gene on chromosome 2.

Pathways: [Regulation of Hormone Metabolic Process](#), [Response to Water Deprivation](#)

Application Details

Application Notes: Recommended Detection Systems: Enhanced Chemiluminescent Kit with anti-Rabbit IgG (ABIN921124) for Western blot.

Application Details: Western blot, 0.1-0.5 µg/mL

Immunohistochemistry(Paraffin-embedded Section), 0.5-1 µg/mL

Direct ELISA, 0.1-0.5 µg/mL

Restrictions: For Research Use only

Handling

Format: Lyophilized

Reconstitution: Add 0.2 mL of distilled water will yield a concentration of 500 µg/mL.

Buffer: Each vial contains 4 mg Trehalose, 0.9 mg NaCl, 0.2 mg Na₂HPO₄, 0.05 mg NaN₃.

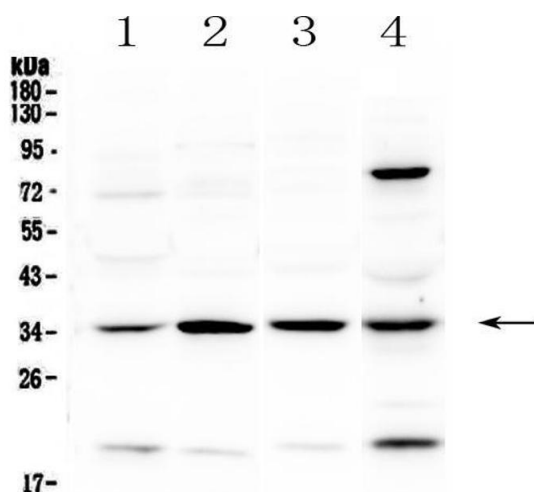
Preservative: Sodium azide

Precaution of Use: This product contains Sodium azide: a POISONOUS AND HAZARDOUS SUBSTANCE which should be handled by trained staff only.

Storage: 4 °C,-20 °C

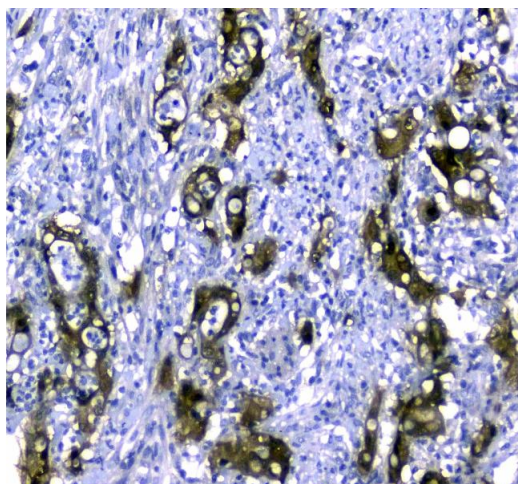
Storage Comment: At -20°C for one year. After reconstitution, at 4°C for one month.

It can also be aliquotted and stored frozen at -20°C for a longer time. Avoid repeated freezing and thawing.



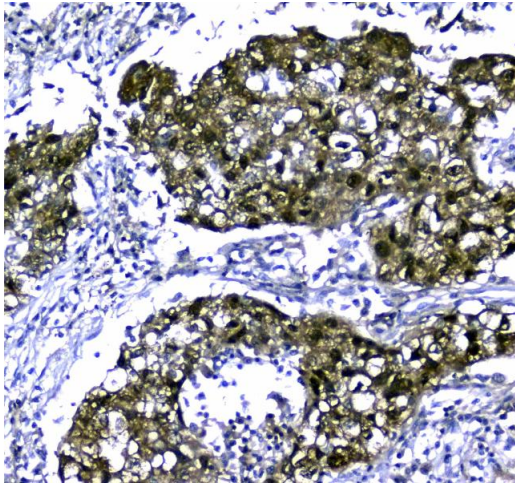
Western Blotting

Image 1. Western blot analysis of STUB1 using anti-STUB1 antibody . Electrophoresis was performed on a 5-20% SDS-PAGE gel at 70V (Stacking gel) / 90V (Resolving gel) for 2-3 hours. The sample well of each Lane was loaded with 50ug of sample under reducing conditions. Lane 1: rat heart tissue lysates, Lane 2: rat brain tissue lysates, Lane 3: mouse brain tissue lysates, Lane 4: human MCF-7 whole cell lysates. After Electrophoresis, proteins were transferred to a Nitrocellulose membrane at 150mA for 50-90 minutes. Blocked the membrane with 5% Non-fat Milk/ TBS for 1.5 hour at RT. The membrane was incubated with rabbit anti-STUB1 antigen affinity purified polyclonal antibody (Catalog #) at 0.5 µg/mL overnight at 4°C, then washed with TBS-0.1%Tween 3 times with 5 minutes each and probed with a goat anti-rabbit IgG-HRP secondary antibody at a dilution of 1:10000 for 1.5 hour at RT. The signal is developed using an Enhanced Chemiluminescent detection (ECL) kit (Catalog # EK1002) with Tanon 5200 system. A specific band was detected for STUB1 at approximately 35KD. The expected band size for STUB1 is at 35KD.



Immunohistochemistry

Image 2. IHC analysis of STUB1 using anti-STUB1 antibody . STUB1 was detected in paraffin-embedded section of human colon cancer tissue. Heat mediated antigen retrieval was performed in citrate buffer (pH6, epitope retrieval solution) for 20 mins. The tissue section was blocked with 10% goat serum. The tissue section was then incubated with 1µg/ml rabbit anti-STUB1 Antibody overnight at 4°C. Biotinylated goat anti-rabbit IgG was used as secondary antibody and incubated for 30 minutes at 37°C. The tissue section was developed using Streptavidin-Biotin-Complex (SABC)(Catalog # SA1022) with DAB as the chromogen.



Immunohistochemistry

Image 3. IHC analysis of STUB1 using anti-STUB1 antibody . STUB1 was detected in paraffin-embedded section of human lung cancer tissue. Heat mediated antigen retrieval was performed in citrate buffer (pH6, epitope retrieval solution) for 20 mins. The tissue section was blocked with 10% goat serum. The tissue section was then incubated with 1µg/ml rabbit anti-STUB1 Antibody overnight at 4°C. Biotinylated goat anti-rabbit IgG was used as secondary antibody and incubated for 30 minutes at 37°C. The tissue section was developed using Streptavidin-Biotin-Complex (SABC)(Catalog # SA1022) with DAB as the chromogen.

Please check the [product details page](#) for more images. Overall 4 images are available for ABIN5693017.