

Datasheet for ABIN5693035

anti-MYBPC3 antibody (AA 1070-1123)**5** Images**1** Publication[Go to Product page](#)

Overview

Quantity:	100 µg
Target:	MYBPC3
Binding Specificity:	AA 1070-1123
Reactivity:	Human, Rat, Mouse
Host:	Rabbit
Clonality:	Polyclonal
Conjugate:	This MYBPC3 antibody is un-conjugated
Application:	ELISA, Western Blotting (WB), Immunohistochemistry (IHC)

Product Details

Brand:	Picoband™
Immunogen:	E. coli-derived human MYBPC3 recombinant protein (Position: Q1070-H1123).
Cross-Reactivity (Details):	No cross reactivity with other proteins.
Characteristics:	Rabbit IgG polyclonal antibody for MYBPC3 detection. Tested with WB, IHC-P, Direct ELISA in Human, Mouse, Rat.

Target Details

Target:	MYBPC3
Alternative Name:	MYBPC3 (MYBPC3 Products)
Background:	Synonyms: Myosin-binding protein C, cardiac-type, Cardiac MyBP-C, C-protein, cardiac muscle

Target Details

isoform, MYBPC3

Background: The myosin-binding protein C, cardiac-type is a protein that in humans is encoded by the MYBPC3 gene. MYBPC3 encodes the cardiac isoform of myosin-binding protein C. Myosin-binding protein C is a myosin-associated protein found in the cross-bridge-bearing zone (C region) of A bands in striated muscle. MYBPC3, the cardiac isoform, is expressed exclusively in heart muscle. Regulatory phosphorylation of the cardiac isoform in vivo by cAMP-dependent protein kinase (PKA) upon adrenergic stimulation may be linked to modulation of cardiac contraction. Mutations in MYBPC3 are one cause of familial hypertrophic cardiomyopathy.

UniProt: [Q14896](#)

Application Details

Application Notes: Recommended Detection Systems: Enhanced Chemiluminescent Kit with anti-Rabbit IgG (ABIN921124) for Western blot, and HRP Conjugated anti-Rabbit IgG Super Vision Assay Kit (SV0002-1) for IHC(P).
Application Details: Western blot, 0.1-0.5 µg/mL
Immunohistochemistry(Paraffin-embedded Section), 0.5-1 µg/mL
Direct ELISA, 0.1-0.5 µg/mL

Restrictions: For Research Use only

Handling

Format: Lyophilized

Reconstitution: Add 0.2 mL of distilled water will yield a concentration of 500 µg/mL.

Buffer: Each vial contains 4 mg Trehalose, 0.9 mg NaCl, 0.2 mg Na₂HPO₄, 0.05 mg NaN₃.

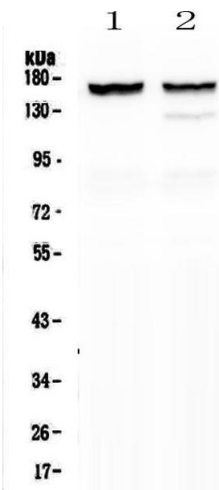
Preservative: Sodium azide

Precaution of Use: This product contains Sodium azide: a POISONOUS AND HAZARDOUS SUBSTANCE which should be handled by trained staff only.

Storage: 4 °C,-20 °C

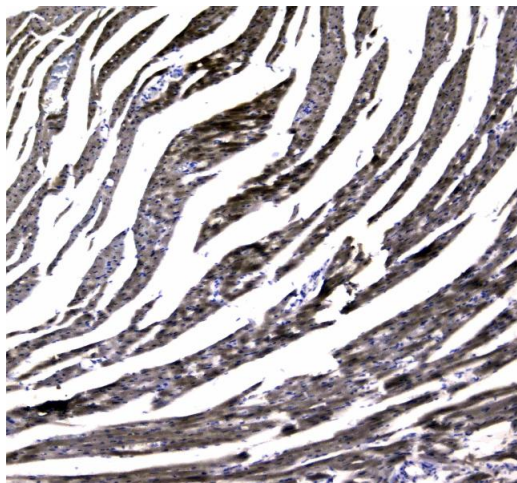
Storage Comment: At -20°C for one year. After reconstitution, at 4°C for one month.
It can also be aliquotted and stored frozen at -20°C for a longer time. Avoid repeated freezing and thawing.

Product cited in: Qian, Gong, Yang, Chen, Chen, Xu, Wu, Tang, Gao, Zeng: "Diastolic dysfunction in spontaneous type 2 diabetes rhesus monkeys: a study using echocardiography and magnetic resonance imaging." in: **BMC cardiovascular disorders**, Vol. 15, pp. 59, (2015) ([PubMed](#)).



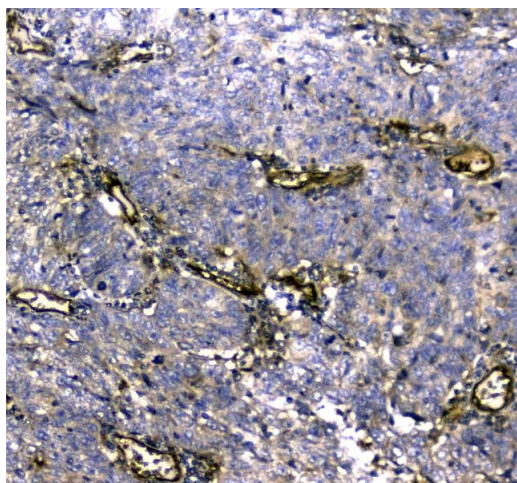
Western Blotting

Image 1. Western blot analysis of MYBPC3 using anti-MYBPC3 antibody . Electrophoresis was performed on a 5-20% SDS-PAGE gel at 70V (Stacking gel) / 90V (Resolving gel) for 2-3 hours. The sample well of each Lane was loaded with 50ug of sample under reducing conditions. Lane 1: rat heart tissue lysates, Lane 2: mouse heart tissue lysates. After Electrophoresis, proteins were transferred to a Nitrocellulose membrane at 150mA for 50-90 minutes. Blocked the membrane with 5% Non-fat Milk/ TBS for 1.5 hour at RT. The membrane was incubated with rabbit anti-MYBPC3 antigen affinity purified polyclonal antibody (Catalog #) at 0.5 µg/mL overnight at 4°C, then washed with TBS-0.1%Tween 3 times with 5 minutes each and probed with a goat anti-rabbit IgG-HRP secondary antibody at a dilution of 1:10000 for 1.5 hour at RT. The signal is developed using an Enhanced Chemiluminescent detection (ECL) kit (Catalog # EK1002) with Tanon 5200 system. A specific band was detected for MYBPC3 at approximately 160KD. The expected band size for MYBPC3 is at 147KD.



Immunohistochemistry

Image 2. IHC analysis of MYBPC3 using anti-MYBPC3 antibody . MYBPC3 was detected in paraffin-embedded section of rat heart tissue. Heat mediated antigen retrieval was performed in citrate buffer (pH6, epitope retrieval solution) for 20 mins. The tissue section was blocked with 10% goat serum. The tissue section was then incubated with 1µg/ml rabbit anti-MYBPC3 Antibody overnight at 4°C. Biotinylated goat anti-rabbit IgG was used as secondary antibody and incubated for 30 minutes at 37°C. The tissue section was developed using Streptavidin-Biotin-Complex (SABC)(Catalog # SA1022) with DAB as the chromogen.



Immunohistochemistry

Image 3. IHC analysis of MYBPC3 using anti-MYBPC3 antibody . MYBPC3 was detected in paraffin-embedded section of human lung cancer tissue. Heat mediated antigen retrieval was performed in citrate buffer (pH6, epitope retrieval solution) for 20 mins. The tissue section was blocked with 10% goat serum. The tissue section was then incubated with 1µg/ml rabbit anti-MYBPC3 Antibody overnight at 4°C. Biotinylated goat anti-rabbit IgG was used as secondary antibody and incubated for 30 minutes at 37°C. The tissue section was developed using Streptavidin-Biotin-Complex (SABC)(Catalog # SA1022) with DAB as the chromogen.

Please check the [product details page](#) for more images. Overall 5 images are available for ABIN5693035.