

Datasheet for ABIN5693046  
**anti-EPS15 antibody (AA 2-88)**



[Go to Product page](#)

2 Images

## Overview

Quantity:	100 µg
Target:	EPS15
Binding Specificity:	AA 2-88
Reactivity:	Human, Mouse, Rat
Host:	Rabbit
Clonality:	Polyclonal
Conjugate:	This EPS15 antibody is un-conjugated
Application:	Western Blotting (WB), ELISA

## Product Details

Immunogen:	E. coli-derived human EPS15 recombinant protein (Position: A2-E88).
Cross-Reactivity (Details):	No cross reactivity with other proteins.
Characteristics:	Rabbit IgG polyclonal antibody for EPS15 detection. Tested with WB, Direct ELISA in Human, Mouse, Rat.

## Target Details

Target:	EPS15
Alternative Name:	EPS15 ( <a href="#">EPS15 Products</a> )
Background:	Synonyms: Epidermal growth factor receptor substrate 15, Protein Eps15, Protein AF-1p, EPS15, AF1P Tissue Specificity: Ubiquitously expressed.

## Target Details

Background: Epidermal growth factor receptor substrate 15 is a protein that in humans is encoded by the EPS15 gene. This gene encodes a protein that is part of the EGFR pathway. The protein is present at clatherin-coated pits and is involved in receptor-mediated endocytosis of EGF. Notably, this gene is rearranged with the HRX/ALL/MLL gene in acute myelogenous leukemias. Alternative splicing results in multiple transcript variants encoding distinct isoforms.

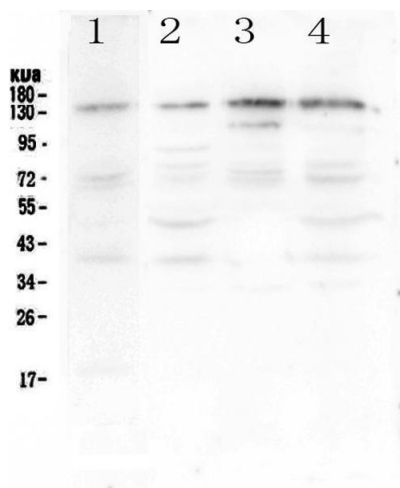
UniProt:	<a href="#">P42566</a>
Pathways:	<a href="#">EGFR Signaling Pathway</a> , <a href="#">Regulation of Muscle Cell Differentiation</a> , <a href="#">Skeletal Muscle Fiber Development</a> , <a href="#">EGFR Downregulation</a>

## Application Details

Application Notes:	Recommended Detection Systems: Enhanced Chemiluminescent Kit with anti-Rabbit IgG (ABIN921124) for Western blot. Application Details: Western blot, 0.1-0.5 µg/mL Direct ELISA, 0.1-0.5 µg/mL
Restrictions:	For Research Use only

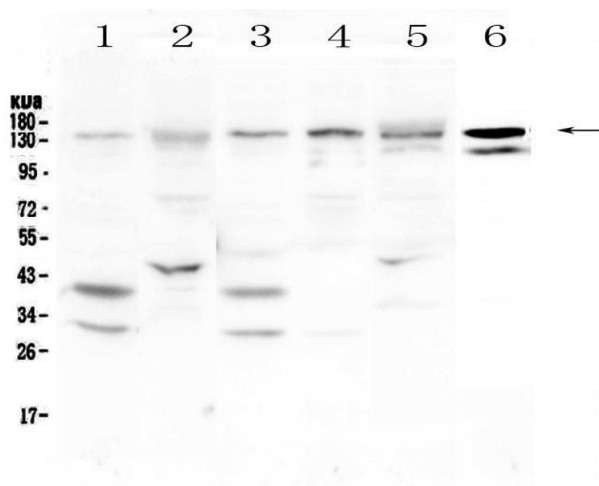
## Handling

Format:	Lyophilized
Reconstitution:	Add 0.2 mL of distilled water will yield a concentration of 500 µg/mL.
Buffer:	Each vial contains 4 mg Trehalose, 0.9 mg NaCl, 0.2 mg Na <sub>2</sub> HPO <sub>4</sub> , 0.05 mg NaN <sub>3</sub> .
Preservative:	Sodium azide
Precaution of Use:	This product contains Sodium azide: a POISONOUS AND HAZARDOUS SUBSTANCE which should be handled by trained staff only.
Storage:	4 °C,-20 °C
Storage Comment:	At -20°C for one year. After reconstitution, at 4°C for one month. It can also be aliquotted and stored frozen at -20°C for a longer time. Avoid repeated freezing and thawing.



#### Western Blotting

**Image 1.** Western blot analysis of EPS15 using anti-EPS15 antibody . Electrophoresis was performed on a 5-20% SDS-PAGE gel at 70V (Stacking gel) / 90V (Resolving gel) for 2-3 hours. The sample well of each Lane was loaded with 50ug of sample under reducing conditions. Lane 1: human A375 whole cell lysates, Lane 2: human HepG2 whole cell lysates, Lane 3: human Jurkat whole cell lysates, Lane 4: human PANC-1 whole cell lysates. After Electrophoresis, proteins were transferred to a Nitrocellulose membrane at 150mA for 50-90 minutes. Blocked the membrane with 5% Non-fat Milk/ TBS for 1.5 hour at RT. The membrane was incubated with rabbit anti-EPS15 antigen affinity purified polyclonal antibody (Catalog # ) at 0.5 µg/mL overnight at 4°C, then washed with TBS-0.1%Tween 3 times with 5 minutes each and probed with a goat anti-rabbit IgG-HRP secondary antibody at a dilution of 1:10000 for 1.5 hour at RT. The signal is developed using an Enhanced Chemiluminescent detection (ECL) kit (Catalog # EK1002) with Tanon 5200 system. A specific band was detected for EPS15 at approximately 140KD. The expected band size for EPS15 is at 99KD.



#### Western Blotting

**Image 2.** Western blot analysis of EPS15 using anti-EPS15 antibody . Electrophoresis was performed on a 5-20% SDS-PAGE gel at 70V (Stacking gel) / 90V (Resolving gel) for 2-3 hours. The sample well of each Lane was loaded with 50ug of sample under reducing conditions. Lane 1: rat brain tissue lysates, Lane 2: rat liver tissue lysates, Lane 3: mouse brain tissue lysates, Lane 4: mouse spleen tissue lysates, Lane 5: mouse liver tissue lysates, Lane 6: mouse testis tissue lysates. After Electrophoresis, proteins were transferred to a Nitrocellulose membrane at 150mA for 50-90 minutes. Blocked the membrane with 5% Non-fat Milk/

TBS for 1.5 hour at RT. The membrane was incubated with rabbit anti-EPS15 antigen affinity purified polyclonal antibody (Catalog # ) at 0.5 µg/mL overnight at 4°C, then washed with TBS-0.1%Tween 3 times with 5 minutes each and probed with a goat anti-rabbit IgG-HRP secondary antibody at a dilution of 1:10000 for 1.5 hour at RT. The signal is developed using an Enhanced Chemiluminescent detection (ECL) kit (Catalog # EK1002) with Tanon 5200 system. A specific band was detected for EPS15 at approximately 140KD. The expected band size for EPS15 is at 99KD.