

Datasheet for ABIN5693052
anti-PPID antibody (AA 306-370)



[Go to Product page](#)

4 Images

Overview

Quantity:	100 µg
Target:	PPID
Binding Specificity:	AA 306-370
Reactivity:	Human, Mouse, Rat
Host:	Rabbit
Clonality:	Polyclonal
Conjugate:	This PPID antibody is un-conjugated
Application:	Western Blotting (WB), Immunohistochemistry (IHC), ELISA, Immunocytochemistry (ICC), Flow Cytometry (FACS)

Product Details

Immunogen:	E. coli-derived human PPID recombinant protein (Position: N306-A370).
Cross-Reactivity (Details):	No cross reactivity with other proteins.
Characteristics:	Rabbit IgG polyclonal antibody for PPID detection. Tested with WB, IHC-P, IHC-F, ICC, FCM, Direct ELISA in Human, Mouse, Rat.

Target Details

Target:	PPID
Alternative Name:	PPID (PPID Products)
Background:	Synonyms: Peptidyl-prolyl cis-trans isomerase D, PPIase D Tissue Specificity: Widely expressed.

Target Details

Background: Cyclophilin D, Peptidylprolyl isomerase D, also known as PPID, is an enzyme which in humans is encoded by the PPID gene. The protein encoded by this gene is a member of the peptidyl-prolyl cis-trans isomerase (PPIase) family. The Cyclophilin D (PPID) gene contains 10 exons and spans 14.2 kb of genomic DNA. By fluorescence in situ hybridization, the PPID gene is mapped to chromosome 4q31.3. PPIases catalyze the cis-trans isomerization of proline imidic peptide bonds in oligopeptides and accelerate the folding of proteins. This protein has been shown to possess PPIase activity and, similar to other family members, can bind to the immunosuppressant ciclosporin.

UniProt: [Q08752](#)

Pathways: [Nuclear Hormone Receptor Binding](#)

Application Details

Application Notes: Recommended Detection Systems: Enhanced Chemiluminescent Kit with anti-Rabbit IgG (ABIN921124) for Western blot, and HRP Conjugated anti-Rabbit IgG Super Vision Assay Kit (SV0002-1) for IHC(P), IHC(F) and ICC.

Application Details: Western blot, 0.1-0.5 µg/mL

Immunohistochemistry(Paraffin-embedded Section), 0.5-1 µg/mL

Immunohistochemistry(Frozen Section), 0.5-1 µg/mL

Immunocytochemistry, 0.5-1 µg/mL

Flow Cytometry, 1-3 µg/1x10⁶ cells

Direct ELISA, 0.1-0.5 µg/mL

Restrictions: For Research Use only

Handling

Format: Lyophilized

Reconstitution: Add 0.2 mL of distilled water will yield a concentration of 500 µg/mL.

Buffer: Each vial contains 4 mg Trehalose, 0.9 mg NaCl, 0.2 mg Na₂HPO₄, 0.05 mg NaN₃.

Preservative: Sodium azide

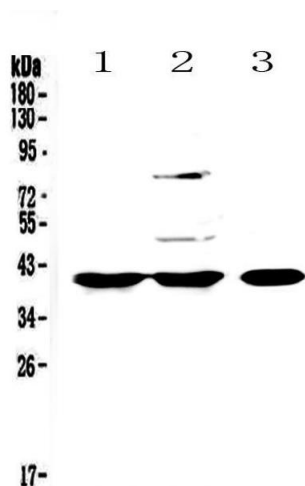
Precaution of Use: This product contains Sodium azide: a POISONOUS AND HAZARDOUS SUBSTANCE which should be handled by trained staff only.

Storage: 4 °C,-20 °C

Storage Comment: At -20°C for one year. After reconstitution, at 4°C for one month.

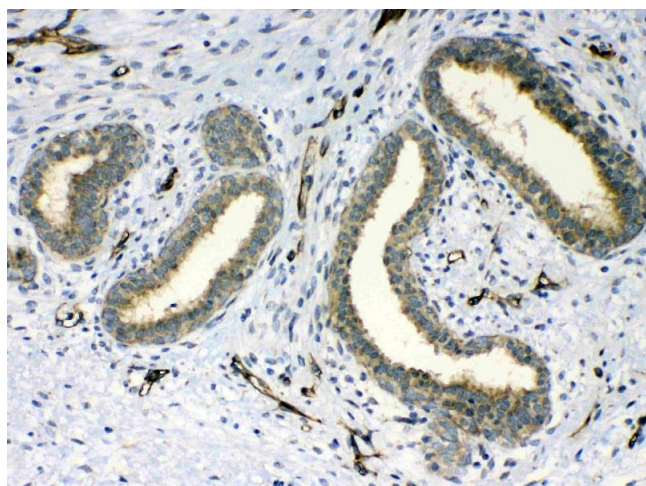
It can also be aliquotted and stored frozen at -20°C for a longer time. Avoid repeated freezing and thawing.

Images



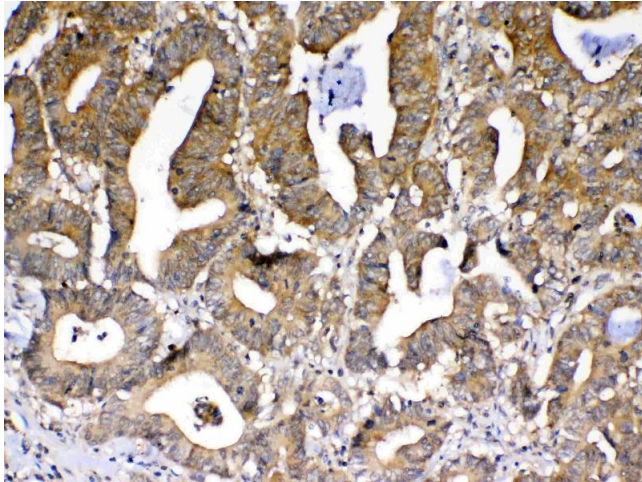
Western Blotting

Image 1. Western blot analysis of PPID using anti-PPID antibody . Electrophoresis was performed on a 5-20% SDS-PAGE gel at 70V (Stacking gel) / 90V (Resolving gel) for 2-3 hours. The sample well of each Lane was loaded with 50ug of sample under reducing conditions. Lane 1: rat spleen tissue lysates, Lane 2: rat liver tissue lysates, Lane 3: mouse testis tissue lysates. After Electrophoresis, proteins were transferred to a Nitrocellulose membrane at 150mA for 50-90 minutes. Blocked the membrane with 5% Non-fat Milk/ TBS for 1.5 hour at RT. The membrane was incubated with rabbit anti-PPID antigen affinity purified polyclonal antibody (Catalog #) at 0.5 µg/mL overnight at 4°C, then washed with TBS-0.1%Tween 3 times with 5 minutes each and probed with a goat anti-rabbit IgG-HRP secondary antibody at a dilution of 1:10000 for 1.5 hour at RT. The signal is developed using an Enhanced Chemiluminescent detection (ECL) kit (Catalog # EK1002) with Tanon 5200 system. A specific band was detected for PPID at approximately 41kD. The expected band size for PPID is at 41kD.



Immunohistochemistry

Image 2. IHC analysis of PPID using anti-PPID antibody . PPID was detected in paraffin-embedded section of human mammary cancer tissue. Heat mediated antigen retrieval was performed in citrate buffer (pH6, epitope retrieval solution) for 20 mins. The tissue section was blocked with 10% goat serum. The tissue section was then incubated with 1µg/ml rabbit anti-PPID Antibody overnight at 4°C. Biotinylated goat anti-rabbit IgG was used as secondary



antibody and incubated for 30 minutes at 37°C. The tissue section was developed using Streptavidin-Biotin-Complex (SABC)(Catalog # SA1022) with DAB as the chromogen.

Immunohistochemistry

Image 3. IHC analysis of PPID using anti-PPID antibody . PPID was detected in paraffin-embedded section of human rectal cancer tissue. Heat mediated antigen retrieval was performed in citrate buffer (pH6, epitope retrieval solution) for 20 mins. The tissue section was blocked with 10% goat serum. The tissue section was then incubated with 1µg/ml rabbit anti-PPID Antibody overnight at 4°C. Biotinylated goat anti-rabbit IgG was used as secondary antibody and incubated for 30 minutes at 37°C. The tissue section was developed using Streptavidin-Biotin-Complex (SABC)(Catalog # SA1022) with DAB as the chromogen.

Please check the [product details page](#) for more images. Overall 4 images are available for ABIN5693052.