

Datasheet for ABIN5693085  
**anti-IGF2R antibody (AA 424-529)**

5 Images

1 Publication

[Go to Product page](#)

## Overview

Quantity:	100 µg
Target:	IGF2R
Binding Specificity:	AA 424-529
Reactivity:	Human, Mouse, Rat
Host:	Rabbit
Clonality:	Polyclonal
Application:	Western Blotting (WB), ELISA, Immunohistochemistry (IHC)

## Product Details

Brand:	Picoband™
Immunogen:	E. coli-derived human IGF2R recombinant protein (Position: F424-R529).
Cross-Reactivity (Details):	No cross reactivity with other proteins.
Characteristics:	Rabbit IgG polyclonal antibody for IGF2R detection. Tested with WB, IHC-P, Direct ELISA in Human, Mouse, Rat.

## Target Details

Target:	IGF2R
Alternative Name:	IGF2R ( <a href="#">IGF2R Products</a> )
Background:	Synonyms: Cation-independent mannose-6-phosphate receptor, CI Man-6-P receptor, CI-MPR, M6PR, 300 kDa mannose 6-phosphate receptor, MPR 300, Insulin-like growth factor 2 receptor, Insulin-like growth factor II receptor, IGF-II receptor, M6P/IGF2 receptor, M6P/IGF2R, CD222,

## Target Details

IGF2R, MPRI

Background: Insulin-like growth factor 2 receptor, also called IGF2R or I-MPR is a protein that in humans is encoded by the IGF2R gene. This gene is mapped to 6q25.3. This gene encodes a receptor for both insulin-like growth factor 2 and mannose 6-phosphate, although the binding sites for either are located on different segments of the receptor. This receptor functions in the intracellular trafficking of lysosomal enzymes, the activation of transforming growth factor beta, and the degradation of insulin-like growth factor 2. While the related mouse gene shows exclusive expression from the maternal allele, imprinting of the human gene appears to be polymorphic, with only a minority of individuals showing expression from the maternal allele.

UniProt: [P11717](#)

## Application Details

Application Notes: Recommended Detection Systems: Enhanced Chemiluminescent Kit with anti-Rabbit IgG (ABIN921124) for Western blot, and HRP Conjugated anti-Rabbit IgG Super Vision Assay Kit (SV0002-1) for IHC(P).

Application Details: Western blot, 0.1-0.5 µg/mL

Immunohistochemistry(Paraffin-embedded Section), 0.5-1 µg/mL

Direct ELISA, 0.1-0.5 µg/mL

Restrictions: For Research Use only

## Handling

Format: Lyophilized

Reconstitution: Add 0.2 mL of distilled water will yield a concentration of 500 µg/mL.

Buffer: Each vial contains 4 mg Trehalose, 0.9 mg NaCl, 0.2 mg Na<sub>2</sub>HPO<sub>4</sub>, 0.05 mg NaN<sub>3</sub>.

Preservative: Sodium azide

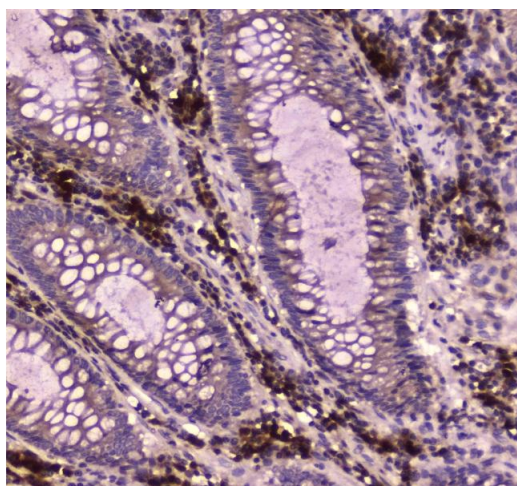
Precaution of Use: This product contains Sodium azide: a POISONOUS AND HAZARDOUS SUBSTANCE which should be handled by trained staff only.

Storage: 4 °C,-20 °C

Storage Comment: At -20°C for one year. After reconstitution, at 4°C for one month.  
It can also be aliquotted and stored frozen at -20°C for a longer time. Avoid repeated freezing and thawing.

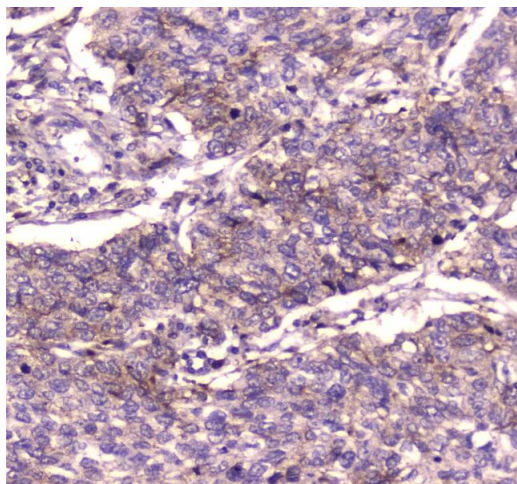
Product cited in: Wang, Sun, Shen, Wu, Liu, Yang, Ji, Ji, Li: "Octreotide Protects the Mouse Retina against Ischemic Reperfusion Injury through Regulation of Antioxidation and Activation of NF- $\kappa$ B." in: **Oxidative medicine and cellular longevity**, Vol. 2015, pp. 970156, (2016) ([PubMed](#)).

## Images



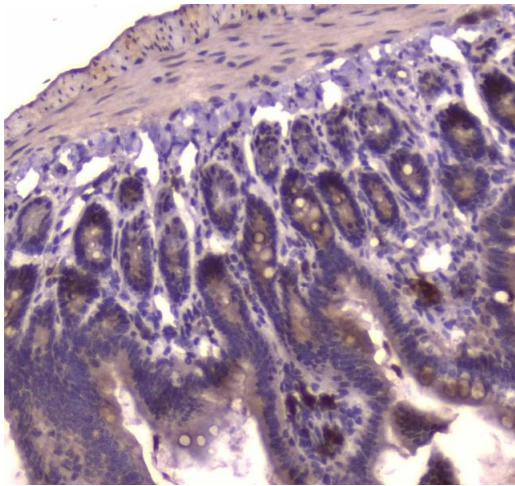
### Immunohistochemistry

**Image 1.** IHC analysis of IGF2R using anti-IGF2R antibody . IGF2R was detected in paraffin-embedded section of human intestinal cancer tissue. Heat mediated antigen retrieval was performed in citrate buffer (pH6, epitope retrieval solution) for 20 mins. The tissue section was blocked with 10% goat serum. The tissue section was then incubated with 2 $\mu$ g/ml rabbit anti-IGF2R Antibody overnight at 4°C. Biotinylated goat anti-rabbit IgG was used as secondary antibody and incubated for 30 minutes at 37°C. The tissue section was developed using Streptavidin-Biotin-Complex (SABC)(Catalog # SA1022) with DAB as the chromogen.



### Immunohistochemistry

**Image 2.** IHC analysis of IGF2R using anti-IGF2R antibody . IGF2R was detected in paraffin-embedded section of human lung cancer tissue. Heat mediated antigen retrieval was performed in citrate buffer (pH6, epitope retrieval solution) for 20 mins. The tissue section was blocked with 10% goat serum. The tissue section was then incubated with 2 $\mu$ g/ml rabbit anti-IGF2R Antibody overnight at 4°C. Biotinylated goat anti-rabbit IgG was used as secondary antibody and incubated for 30 minutes at 37°C. The tissue section was developed using Streptavidin-Biotin-Complex (SABC)(Catalog # SA1022) with DAB as the chromogen.



#### Immunohistochemistry

**Image 3.** IHC analysis of IGF2R using anti-IGF2R antibody . IGF2R was detected in paraffin-embedded section of mouse small intestine tissue. Heat mediated antigen retrieval was performed in citrate buffer (pH6, epitope retrieval solution) for 20 mins. The tissue section was blocked with 10% goat serum. The tissue section was then incubated with 2µg/ml rabbit anti-IGF2R Antibody overnight at 4°C. Biotinylated goat anti-rabbit IgG was used as secondary antibody and incubated for 30 minutes at 37°C. The tissue section was developed using Streptavidin-Biotin-Complex (SABC)(Catalog # SA1022) with DAB as the chromogen.

Please check the [product details page](#) for more images. Overall 5 images are available for ABIN5693085.