

Datasheet for ABIN5693106

anti-POLR2A/RPB1 antibody (AA 1148-1384)[Go to Product page](#)

4 Images

Overview

Quantity:	100 µg
Target:	POLR2A/RPB1 (POLR2A)
Binding Specificity:	AA 1148-1384
Reactivity:	Human, Mouse, Rat
Host:	Rabbit
Clonality:	Polyclonal
Application:	Immunohistochemistry (IHC), ELISA

Product Details

Immunogen:	E. coli-derived human POLR2A recombinant protein (Position: A1148-H1384).
Cross-Reactivity (Details):	No cross reactivity with other proteins.
Characteristics:	Rabbit IgG polyclonal antibody for POLR2A detection. Tested with IHC-P, Direct ELISA in Human, Mouse, Rat.

Target Details

Target:	POLR2A/RPB1 (POLR2A)
Alternative Name:	POLR2A (POLR2A Products)
Background:	<p>Synonyms: DNA-directed RNA polymerase II subunit RPB1, RNA polymerase II subunit B1, DNA-directed RNA polymerase II subunit A, DNA-directed RNA polymerase III largest subunit, RNA-directed RNA polymerase II subunit RPB1, POLR2A, POLR2</p> <p>Background: DNA-directed RNA polymerase II subunit RPB1, also known as RPB1, is an enzyme</p>

Target Details

that in humans is encoded by the POLR2A gene. This gene encodes the largest subunit of RNA polymerase II, the polymerase responsible for synthesizing messenger RNA in eukaryotes. The product of this gene contains a carboxy terminal domain composed of heptapeptide repeats that are essential for polymerase activity. These repeats contain serine and threonine residues that are phosphorylated in actively transcribing RNA polymerase. In addition, this subunit, in combination with several other polymerase subunits, forms the DNA binding domain of the polymerase, a groove in which the DNA template is transcribed into RNA.

UniProt: [P24928](#)

Pathways: [Regulatory RNA Pathways](#)

Application Details

Application Notes: Recommended Detection Systems: HRP Conjugated anti-Rabbit IgG Super Vision Assay Kit (SV0002-1) for IHC(P).
Application Details: Immunohistochemistry(Paraffin-embedded Section), 0.5-1 µg/mL
Direct ELISA, 0.1-0.5 µg/mL

Restrictions: For Research Use only

Handling

Format: Lyophilized

Reconstitution: Add 0.2 mL of distilled water will yield a concentration of 500 µg/mL.

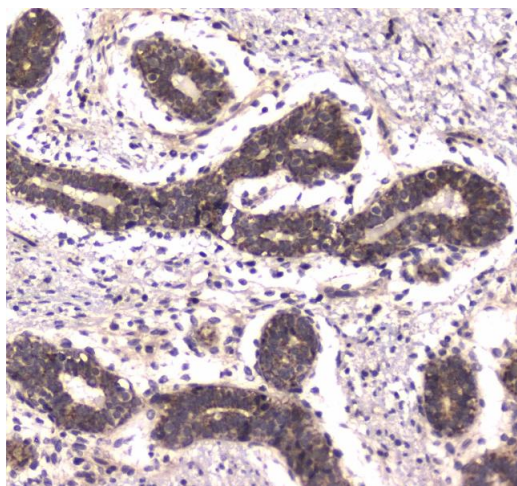
Buffer: Each vial contains 4 mg Trehalose, 0.9 mg NaCl, 0.2 mg Na₂HPO₄, 0.05 mg NaN₃.

Preservative: Sodium azide

Precaution of Use: This product contains Sodium azide: a POISONOUS AND HAZARDOUS SUBSTANCE which should be handled by trained staff only.

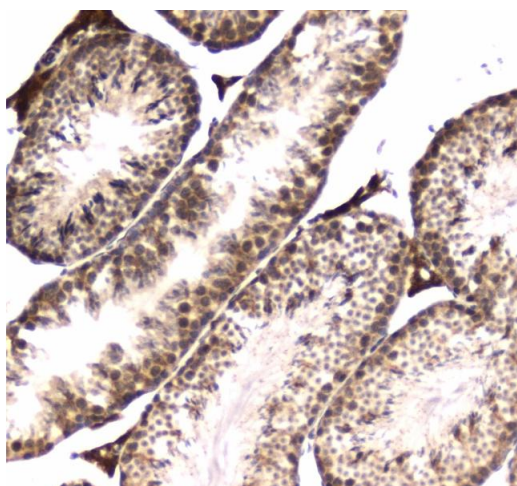
Storage: 4 °C, -20 °C

Storage Comment: At -20°C for one year. After reconstitution, at 4°C for one month.
It can also be aliquotted and stored frozen at -20°C for a longer time. Avoid repeated freezing and thawing.



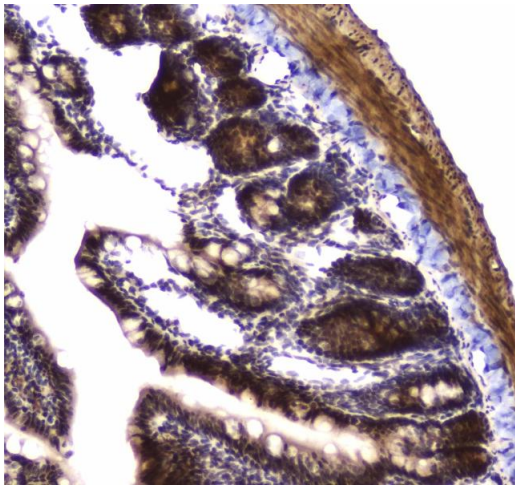
Immunohistochemistry

Image 1. IHC analysis of POLR2A using anti-POLR2A antibody . POLR2A was detected in paraffin-embedded section of human mammary cancer tissue. Heat mediated antigen retrieval was performed in citrate buffer (pH6, epitope retrieval solution) for 20 mins. The tissue section was blocked with 10% goat serum. The tissue section was then incubated with 1µg/ml rabbit anti-POLR2A Antibody overnight at 4°C. Biotinylated goat anti-rabbit IgG was used as secondary antibody and incubated for 30 minutes at 37°C. The tissue section was developed using Streptavidin-Biotin-Complex (SABC)(Catalog # SA1022) with DAB as the chromogen.



Immunohistochemistry

Image 2. IHC analysis of POLR2A using anti-POLR2A antibody . POLR2A was detected in paraffin-embedded section of mouse testis tissue . Heat mediated antigen retrieval was performed in citrate buffer (pH6, epitope retrieval solution) for 20 mins. The tissue section was blocked with 10% goat serum. The tissue section was then incubated with 1µg/ml rabbit anti-POLR2A Antibody overnight at 4°C. Biotinylated goat anti-rabbit IgG was used as secondary antibody and incubated for 30 minutes at 37°C. The tissue section was developed using Streptavidin-Biotin-Complex (SABC)(Catalog # SA1022) with DAB as the chromogen.



Immunohistochemistry

Image 3. IHC analysis of POLR2A using anti-POLR2A antibody . POLR2A was detected in paraffin-embedded section of rat small intestine tissue. Heat mediated antigen retrieval was performed in citrate buffer (pH6, epitope retrieval solution) for 20 mins. The tissue section was blocked with 10% goat serum. The tissue section was then incubated with 1µg/ml rabbit anti-POLR2A Antibody overnight at 4°C. Biotinylated goat anti-rabbit IgG was used as secondary antibody and incubated for 30 minutes at 37°C. The tissue section was developed using Streptavidin-Biotin-Complex (SABC)(Catalog # SA1022) with DAB as the chromogen.

Please check the [product details page](#) for more images. Overall 4 images are available for ABIN5693106.