

Datasheet for ABIN5693154

anti-CD8 alpha antibody (AA 28-196)[Go to Product page](#)**4** Images**2** Publications

Overview

| | |
|----------------------|--|
| Quantity: | 100 µg |
| Target: | CD8 alpha (CD8A) |
| Binding Specificity: | AA 28-196 |
| Reactivity: | Mouse, Rat |
| Host: | Rabbit |
| Clonality: | Polyclonal |
| Conjugate: | This CD8 alpha antibody is un-conjugated |
| Application: | Flow Cytometry (FACS), Immunohistochemistry (IHC), Western Blotting (WB), ELISA, Immunocytochemistry (ICC) |

Product Details

| | |
|-----------------------------|--|
| Brand: | Picoband™ |
| Immunogen: | E. coli-derived mouse CD8 alpha recombinant protein (Position: K28-Y196). |
| Cross-Reactivity (Details): | No cross reactivity with other proteins. |
| Characteristics: | Rabbit IgG polyclonal antibody for CD8 alpha detection. Tested with WB, IHC-P, IHC-F, ICC, FCM, Direct ELISA in Mouse,Rat. |

Target Details

| | |
|-------------------|--|
| Target: | CD8 alpha (CD8A) |
| Alternative Name: | Cd8a (CD8A Products) |

Target Details

| | |
|-------------|--|
| Background: | <p>Synonyms: T-cell surface glycoprotein CD8 alpha chain, T-cell surface glycoprotein Lyt-2, CD8a, Cd8a, Lyt-2, Lyt2</p> <p>Background: The CD8 antigen is a cell surface glycoprotein found on most cytotoxic T lymphocytes that mediates efficient cell-cell interactions within the immune system. It is mapped to 2p11.2. The CD8 antigen, acting as a coreceptor, and the T-cell receptor on the T lymphocyte recognize antigen displayed by an antigen presenting cell (APC) in the context of class I MHC molecules. The functional coreceptor is either a homodimer composed of two alpha chains, or a heterodimer composed of one alpha and one beta chain. Both alpha and beta chains share significant homology to immunoglobulin variable light chains. This gene also encodes the CD8 alpha chain isoforms.</p> |
| UniProt: | P01731 |
| Pathways: | TCR Signaling |

Application Details

| | |
|--------------------|---|
| Application Notes: | <p>Recommended Detection Systems: Enhanced Chemiluminescent Kit with anti-Rabbit IgG (ABIN921124) for Western blot, and HRP Conjugated anti-Rabbit IgG Super Vision Assay Kit (SV0002-1) for IHC(P), IHC(F) and ICC.</p> <p>Application Details: Western blot, 0.1-0.5 µg/mL</p> <p>Immunohistochemistry(Paraffin-embedded Section), 0.5-1 µg/mL</p> <p>Immunohistochemistry(Frozen Section), 0.5-1 µg/mL</p> <p>Immunocytochemistry, 0.5-1 µg/mL</p> <p>Flow Cytometry, 1-3 µg/1x10⁶ cells</p> <p>Direct ELISA, 0.1-0.5 µg/mL</p> |
| Restrictions: | For Research Use only |

Handling

| | |
|--------------------|--|
| Format: | Lyophilized |
| Reconstitution: | Add 0.2 mL of distilled water will yield a concentration of 500 µg/mL. |
| Buffer: | Each vial contains 4 mg Trehalose, 0.9 mg NaCl, 0.2 mg Na ₂ HPO ₄ , 0.05 mg NaN ₃ . |
| Preservative: | Sodium azide |
| Precaution of Use: | This product contains Sodium azide: a POISONOUS AND HAZARDOUS SUBSTANCE which should be handled by trained staff only. |

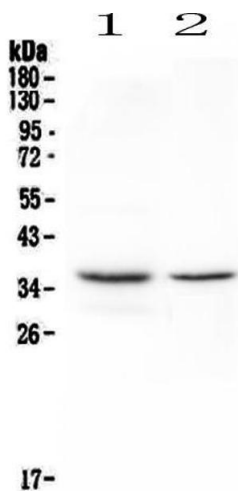
Handling

| | |
|------------------|--|
| Storage: | 4 °C,-20 °C |
| Storage Comment: | At -20°C for one year. After reconstitution, at 4°C for one month. It can also be aliquotted and stored frozen at -20°C for a longer time. Avoid repeated freezing and thawing. |

Publications

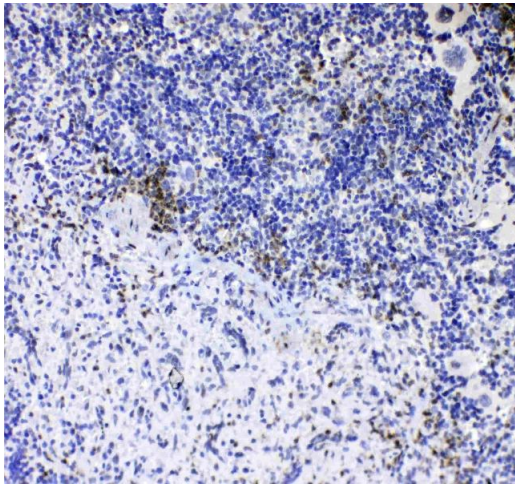
| | |
|-------------------|--|
| Product cited in: | Xu, Tan, Wang, Wang, Li, Wu, Chen, Wu, Tan: "Elevated survivin expression in peripheral blood mononuclear cells is central to collateral formation in coronary chronic total occlusion." in: International journal of molecular medicine , Vol. 35, Issue 6, pp. 1501-10, (2015) (PubMed). Zhang, Chen, Lao, Huang: "Effect of Hejie decoction on T cell immune state of chronic hepatitis B patients." in: World journal of gastroenterology , Vol. 10, Issue 10, pp. 1436-9, (2005) (PubMed). |
|-------------------|--|

Images



Western Blotting

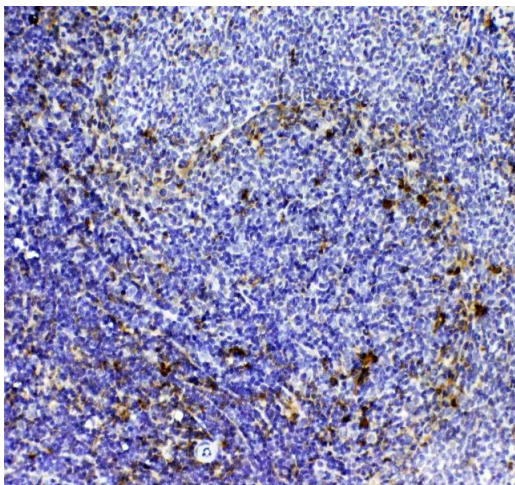
Image 1. Western blot analysis of CD8 alpha using anti-CD8 alpha antibody . Electrophoresis was performed on a 5-20% SDS-PAGE gel at 70V (Stacking gel) / 90V (Resolving gel) for 2-3 hours. The sample well of each Lane was loaded with 50ug of sample under reducing conditions. Lane 1: rat spleen tissue lysate, Lane 2: rat thymus tissue lysate. After Electrophoresis, proteins were transferred to a Nitrocellulose membrane at 150mA for 50-90 minutes. Blocked the membrane with 5% Non-fat Milk/ TBS for 1.5 hour at RT. The membrane was incubated with rabbit anti-CD8 alpha antigen affinity purified polyclonal antibody (Catalog #) at 0.5 µg/mL overnight at 4°C, then washed with TBS-0.1%Tween 3 times with 5 minutes each and probed with a goat anti-rabbit IgG-HRP secondary antibody at a dilution of 1:10000 for 1.5 hour at RT. The signal is developed using an Enhanced Chemiluminescent detection



(ECL) kit (Catalog # EK1002) with Tanon 5200 system. A specific band was detected for CD8 alpha at approximately 36KD. The expected band size for CD8 alpha is at 26KD.

Immunohistochemistry

Image 2. IHC analysis of CD8 alpha using anti-CD8 alpha antibody . CD8 alpha was detected in paraffin-embedded section of mouse spleen tissue . Heat mediated antigen retrieval was performed in citrate buffer (pH6, epitope retrieval solution) for 20 mins. The tissue section was blocked with 10% goat serum. The tissue section was then incubated with 1µg/ml rabbit anti-CD8 alpha Antibody overnight at 4°C. Biotinylated goat anti-rabbit IgG was used as secondary antibody and incubated for 30 minutes at 37°C. The tissue section was developed using Streptavidin-Biotin-Complex (SABC)(Catalog # SA1022) with DAB as the chromogen.



Immunohistochemistry

Image 3. IHC analysis of CD8 alpha using anti-CD8 alpha antibody . CD8 alpha was detected in paraffin-embedded section of rat spleen tissue . Heat mediated antigen retrieval was performed in citrate buffer (pH6, epitope retrieval solution) for 20 mins. The tissue section was blocked with 10% goat serum. The tissue section was then incubated with 1µg/ml rabbit anti-CD8 alpha Antibody overnight at 4°C. Biotinylated goat anti-rabbit IgG was used as secondary antibody and incubated for 30 minutes at 37°C. The tissue section was developed using Streptavidin-Biotin-Complex (SABC)(Catalog # SA1022) with DAB as the chromogen.

Please check the [product details page](#) for more images. Overall 4 images are available for ABIN5693154.