

Datasheet for ABIN5693187  
**anti-CD2AP antibody (AA 253-337)**[Go to Product page](#)

## 1 Image

## Overview

Quantity:	100 µg
Target:	CD2AP (Cd2ap)
Binding Specificity:	AA 253-337
Reactivity:	Human, Rat, Mouse
Host:	Rabbit
Clonality:	Polyclonal
Conjugate:	This CD2AP antibody is un-conjugated
Application:	Western Blotting (WB), ELISA, Immunocytochemistry (ICC), Flow Cytometry (FACS), Immunohistochemistry (Frozen Sections) (IHC (fro))

## Product Details

Brand:	Picoband™
Immunogen:	E. coli-derived human CD2AP recombinant protein (Position: K253-K337).
Cross-Reactivity (Details):	No cross reactivity with other proteins.
Characteristics:	Rabbit IgG polyclonal antibody for CD2AP detection. Tested with WB, IHC-F, ICC, FCM, Direct ELISA in Human, Mouse, Rat.

## Target Details

Target:	CD2AP (Cd2ap)
Alternative Name:	CD2AP ( <a href="#">Cd2ap Products</a> )

## Target Details

Background:	<p>Synonyms: CD2-associated protein, Adapter protein CMS, Cas ligand with multiple SH3 domains, CD2AP</p> <p>Tissue Specificity: Widely expressed in fetal and adult tissues.</p> <p>Background: CD2-associated protein is a protein that in humans is encoded by the CD2AP gene. This gene encodes a scaffolding molecule that regulates the actin cytoskeleton. The protein directly interacts with filamentous actin and a variety of cell membrane proteins through multiple actin binding sites, SH3 domains, and a proline-rich region containing binding sites for SH3 domains. The cytoplasmic protein localizes to membrane ruffles, lipid rafts, and the leading edges of cells. It is implicated in dynamic actin remodeling and membrane trafficking that occurs during receptor endocytosis and cytokinesis. Haploinsufficiency of this gene is implicated in susceptibility to glomerular disease.</p>
UniProt:	<a href="#">Q9Y5K6</a>

## Application Details

Application Notes:	<p>Recommended Detection Systems: Enhanced Chemiluminescent Kit with anti-Rabbit IgG (ABIN921124) for Western blot, and HRP Conjugated anti-Rabbit IgG Super Vision Assay Kit (SV0002-1) for IHC(F) and ICC.</p> <p>Application Details: Western blot, 0.1-0.5 µg/mL</p> <p>Immunohistochemistry(Frozen Section), 0.5-1 µg/mL, Human</p> <p>Immunocytochemistry, 0.5-1 µg/mL, Human</p> <p>Flow Cytometry, 1-3 µg/1x10<sup>6</sup> cells, Human</p> <p>Direct ELISA, 0.1-0.5 µg/mL</p>
Restrictions:	For Research Use only

## Handling

Format:	Lyophilized
Reconstitution:	Add 0.2 mL of distilled water will yield a concentration of 500 µg/mL.
Buffer:	Each vial contains 4 mg Trehalose, 0.9 mg NaCl, 0.2 mg Na <sub>2</sub> HPO <sub>4</sub> , 0.05 mg NaN <sub>3</sub> .
Preservative:	Sodium azide
Precaution of Use:	This product contains Sodium azide: a POISONOUS AND HAZARDOUS SUBSTANCE which should be handled by trained staff only.
Storage:	4 °C, -20 °C

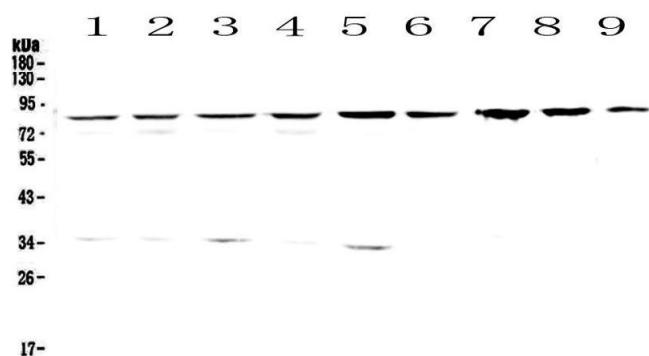
## Handling

### Storage Comment:

At -20°C for one year. After reconstitution, at 4°C for one month.

It can also be aliquotted and stored frozen at -20°C for a longer time. Avoid repeated freezing and thawing.

## Images



### Western Blotting

**Image 1.** Western blot analysis of CD2AP using anti-CD2AP antibody . Electrophoresis was performed on a 5-20% SDS-PAGE gel at 70V (Stacking gel) / 90V (Resolving gel) for 2-3 hours. The sample well of each Lane was loaded with 50ug of sample under reducing conditions. Lane 1: human Hela whole cell lysates, Lane 2: human 293T whole cell lysates, Lane 3: human MCF-7 whole cell lysates, Lane 4: human COLO-320 whole cell lysates, Lane 5: human 22RV1 whole cell lysates, Lane 6: human SK-OV-3 whole cell lysates, Lane 7: rat stomach tissue lysates, Lane 8: rat liver tissue lysates, Lane 9: mouse liver tissue lysates. After Electrophoresis, proteins were transferred to a Nitrocellulose membrane at 150mA for 50-90 minutes. Blocked the membrane with 5% Non-fat Milk/ TBS for 1.5 hour at RT. The membrane was incubated with rabbit anti-CD2AP antigen affinity purified polyclonal antibody (Catalog # ) at 0.5 µg/mL overnight at 4°C, then washed with TBS-0.1%Tween 3 times with 5 minutes each and probed with a goat anti-rabbit IgG-HRP secondary antibody at a dilution of 1:10000 for 1.5 hour at RT. The signal is developed using an Enhanced Chemiluminescent detection (ECL) kit (Catalog # EK1002) with Tanon 5200 system. A specific band was detected for CD2AP at approximately 85KD. The expected band size for CD2AP is at 71KD.