

Datasheet for ABIN5693236

**anti-GAL antibody**[Go to Product page](#)**1** Image

## Overview

|              |                                    |
|--------------|------------------------------------|
| Quantity:    | 100 µg                             |
| Target:      | GAL                                |
| Reactivity:  | Mouse, Rat                         |
| Host:        | Rabbit                             |
| Clonality:   | Polyclonal                         |
| Conjugate:   | This GAL antibody is un-conjugated |
| Application: | Western Blotting (WB)              |

## Product Details

|                             |   |
|-----------------------------|---|
| Brand:                      | Picoband™   |
| Immunogen:                  | A synthetic peptide corresponding to a sequence of human Galanin (WTLNSAGYLLGPHAVGNHRSFSDKNGLTS). |
| Sequence:                   | WTLNSAGYLL GPHAVGNHRS FSDKNGLTS   |
| Cross-Reactivity (Details): | No cross reactivity with other proteins.  |
| Predicted Reactivity:       | Human   |
| Characteristics:            | Rabbit IgG polyclonal antibody for Galanin detection. Tested with WB in Human,Mouse,Rat.          |

## Target Details

|                   |                                      |
|-------------------|--------------------------------------|
| Target:           | GAL                                  |
| Alternative Name: | GAL ( <a href="#">GAL Products</a> ) |

## Target Details

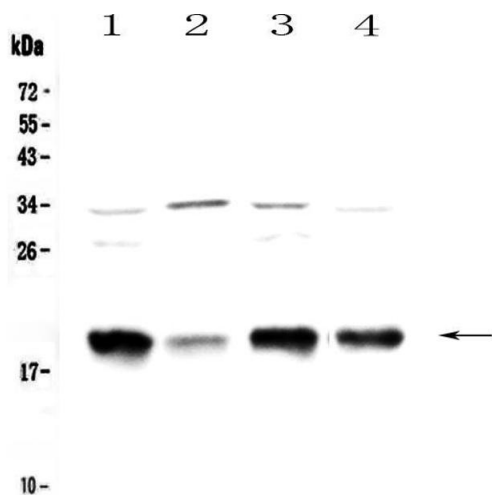
|             |   |
|-------------|---|
| Background: | <p>Synonyms: Galanin peptides, Galanin, Galanin message-associated peptide, GMAP, GAL, GAL1, GALN, GLNN</p> <p>Background: Galanin is a neuropeptide encoded by the GAL gene, that is widely expressed in the brain, spinal cord, and gut of humans as well as other mammals. This gene encodes a neuroendocrine peptide that is widely expressed in the central and peripheral nervous systems and also the gastrointestinal tract, pancreas, adrenal gland and urogenital tract. The encoded protein is a precursor that is proteolytically processed to generate two mature peptides: galanin and galanin message-associated peptide (GMAP). Galanin has diverse physiological functions including nociception, feeding and energy homeostasis, osmotic regulation and water balance. GMAP has been demonstrated to possess antifungal activity and hypothesized to be part of the innate immune system.</p> |
| UniProt:    | <a href="#">P22466</a>  |
| Pathways:   | <a href="#">Hormone Transport</a> , <a href="#">Regulation of Hormone Metabolic Process</a> , <a href="#">Feeding Behaviour</a>   |

## Application Details

|                    |   |
|--------------------|---|
| Application Notes: | <p>Recommended Detection Systems: Enhanced Chemiluminescent Kit with anti-Rabbit IgG (ABIN921124) for Western blot.</p> <p>Application Details: Western blot, 0.1-0.5 µg/mL</p> |
| Restrictions:      | For Research Use only   |

## Handling

|                    |   |
|--------------------|---|
| Format:            | Lyophilized   |
| Reconstitution:    | Add 0.2 mL of distilled water will yield a concentration of 500 µg/mL.  |
| Buffer:            | Each vial contains 4 mg Trehalose, 0.9 mg NaCl, 0.2 mg Na <sub>2</sub> HPO <sub>4</sub> , 0.05 mg NaN <sub>3</sub> .  |
| Preservative:      | Sodium azide  |
| Precaution of Use: | This product contains Sodium azide: a POISONOUS AND HAZARDOUS SUBSTANCE which should be handled by trained staff only.  |
| Storage:           | 4 °C,-20 °C   |
| Storage Comment:   | <p>At -20°C for one year. After reconstitution, at 4°C for one month.</p> <p>It can also be aliquotted and stored frozen at -20°C for a longer time. Avoid repeated freezing and thawing.</p> |



Western Blotting

**Image 1.** Western blot analysis of Galanin using anti-Galanin antibody . Electrophoresis was performed on a 5-20% SDS-PAGE gel at 70V (Stacking gel) / 90V (Resolving gel) for 2-3 hours. The sample well of each Lane was loaded with 50ug of sample under reducing conditions. Lane 1: rat brain tissue lysates, Lane 2: rat small intestine tissue lysates, Lane 3: mouse brain tissue lysates, Lane 4: mouse small intestine tissue lysates. After Electrophoresis, proteins were transferred to a Nitrocellulose membrane at 150mA for 50-90 minutes. Blocked the membrane with 5% Non-fat Milk/ TBS for 1.5 hour at RT. The membrane was incubated with rabbit anti-Galanin antigen affinity purified polyclonal antibody (Catalog # ) at 0.5 µg/mL overnight at 4°C, then washed with TBS-0.1%Tween 3 times with 5 minutes each and probed with a goat anti-rabbit IgG-HRP secondary antibody at a dilution of 1:10000 for 1.5 hour at RT. The signal is developed using an Enhanced Chemiluminescent detection (ECL) kit (Catalog # EK1002) with Tanon 5200 system. A specific band was detected for Galanin at approximately 19KD. The expected band size for Galanin is at 13KD.