



[Go to Product page](#)

Datasheet for ABIN5695906
anti-FOXO1 antibody (AA 410-520) (Atto 488)

2 Images

Overview

Quantity:	100 µg
Target:	FOXO1
Binding Specificity:	AA 410-520
Reactivity:	Human, Rat
Host:	Rabbit
Clonality:	Polyclonal
Conjugate:	This FOXO1 antibody is conjugated to Atto 488
Application:	Western Blotting (WB), Immunohistochemistry (IHC)

Product Details

Immunogen:	Synthetic peptide from the mid-protein of Human Forkhead box protein O1 (aa. 410-520)
Specificity:	Detects 69 kDa, 75 kDa. 75 kDa band is due to post translational modifications.
Purification:	Peptide Affinity Purified

Target Details

Target:	FOXO1
Alternative Name:	FOXO1 (FOXO1 Products)
Gene ID:	2308
NCBI Accession:	NP_002006
UniProt:	Q12778

Target Details

Pathways: [PI3K-Akt Signaling](#), [Cell Division Cycle](#), [Fc-epsilon Receptor Signaling Pathway](#), [EGFR Signaling Pathway](#), [Neurotrophin Signaling Pathway](#), [Carbohydrate Homeostasis](#), [Chromatin Binding](#), [Regulation of Carbohydrate Metabolic Process](#), [CXCR4-mediated Signaling Events](#), [BCR Signaling](#)

Application Details

Application Notes:

- WB (1:1000)
- IHC (1:50)
- optimal dilutions for assays should be determined by the user.

Comment: A 1:1000 dilution of ABIN5695906 was sufficient for detection of FOXO1 in 15 µg of rat Liver cell lysates by ECL immunoblot analysis using goat anti-rabbit IgG:HRP as the secondary antibody.

Restrictions: For Research Use only

Handling

Format: Liquid

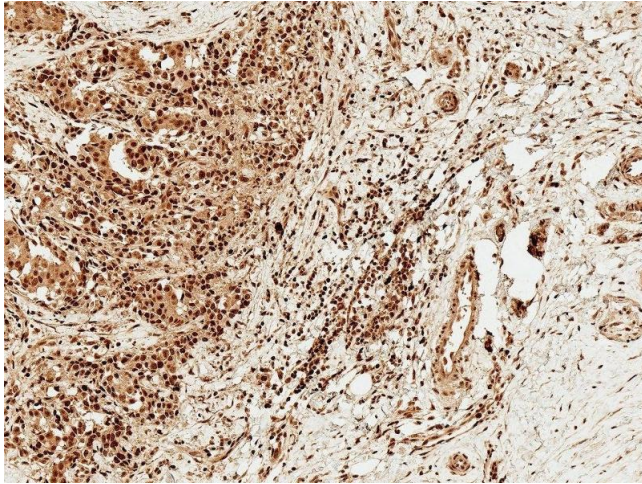
Concentration: 1 mg/mL

Buffer: PBS pH 7.4, 50 % glycerol, 0.09 % Sodium Azide

Preservative: Sodium azide

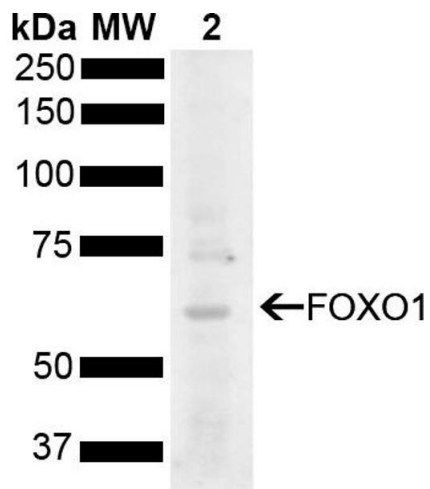
Precaution of Use: This product contains Sodium azide: a POISONOUS AND HAZARDOUS SUBSTANCE, which should be handled by trained staff only.

Storage: -20 °C



Immunohistochemistry

Image 1. Immunohistochemistry analysis using Rabbit Anti-FOXO1 Polyclonal Antibody (ABIN5695906). Tissue: Breast Cancer. Species: Human. Fixation: Formalin Fixed Paraffin-Embedded. Primary Antibody: Rabbit Anti-FOXO1 Polyclonal Antibody (ABIN5695906) at 1:50 for 30 min at RT. Counterstain: Hematoxylin. Localization: Cytoplasm, Nucleus. Magnification: 10X. HRP-DAB Detection.



Western Blotting

Image 2. Western blot analysis of Rat Liver showing detection of 69.7 kDa FOXO1 protein using Rabbit Anti-FOXO1 Polyclonal Antibody (ABIN5695906). Lane 1: Molecular Weight Ladder (MW). Lane 2: Rat Liver. Load: 15 µg. Block: 5 % Skim Milk powder in TBST. Primary Antibody: Rabbit Anti-FOXO1 Polyclonal Antibody (ABIN5695906) at 1:1000 for 2 hours at RT with shaking. Secondary Antibody: Goat Anti-Rabbit IgG: HRP at 1:5000 for 1 hour at RT. Color Development: ECL solution for 5 min at RT. Predicted/Observed Size: 69.7 kDa. Other Band(s): 75 kDa.