



[Go to Product page](#)

Datasheet for ABIN5695933

anti-MCL-1 antibody (AA 70-170) (FITC)

2 Images

Overview

Quantity:	100 µg
Target:	MCL-1 (MCL1)
Binding Specificity:	AA 70-170
Reactivity:	Human, Mouse, Rat
Host:	Rabbit
Clonality:	Polyclonal
Conjugate:	This MCL-1 antibody is conjugated to FITC
Application:	Western Blotting (WB), Immunohistochemistry (IHC)

Product Details

Immunogen:	Synthetic peptide from the mid-protein of Human Induced myeloid leukemia cell differentiation protein Mcl-1 (aa. 70-170)
Specificity:	Detects 37 kDa and 28 kDa. 37 kDa band is isoform 1 and 28 kDa band is isoform 2.
Purification:	Peptide Affinity Purified

Target Details

Target:	MCL-1 (MCL1)
Alternative Name:	MCL1 (MCL1 Products)
Gene ID:	4170
NCBI Accession:	NP_001184249

Target Details

UniProt: [Q07820](#)

Pathways: [MAPK Signaling](#)

Application Details

Application Notes:

- WB (1:1000)
- IHC (1:50)
- optimal dilutions for assays should be determined by the user.

Comment: A 1:1000 dilution of ABIN5695933 was sufficient for detection of MCL1 in 15 µg of mouse, rat Liver cell lysates by ECL immunoblot analysis using goat anti-rabbit IgG:HRP as the secondary antibody.

Restrictions: For Research Use only

Handling

Format: Liquid

Concentration: 1 mg/mL

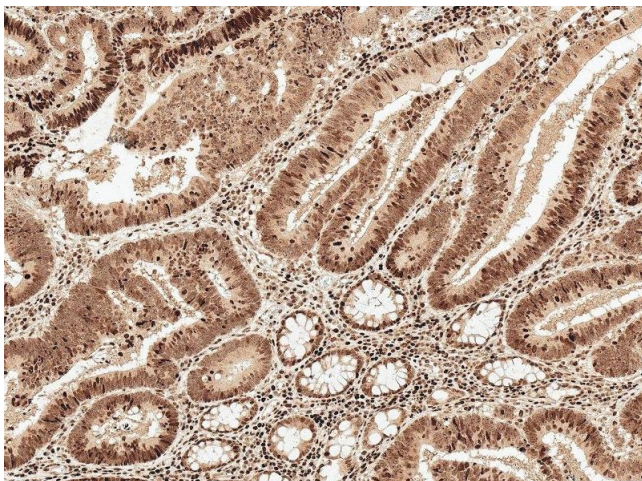
Buffer: PBS pH 7.4, 50 % glycerol, 0.09 % Sodium Azide

Preservative: Sodium azide

Precaution of Use: This product contains Sodium azide: a POISONOUS AND HAZARDOUS SUBSTANCE, which should be handled by trained staff only.

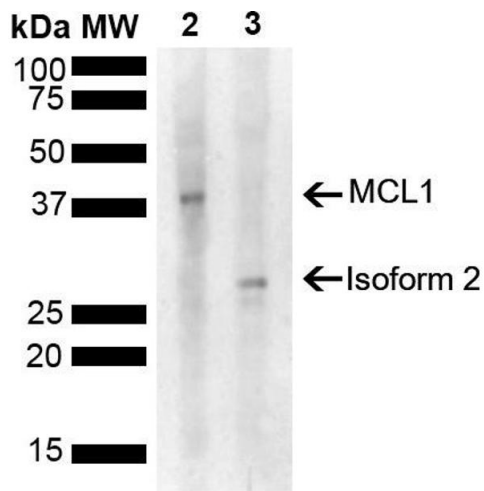
Storage: -20 °C

Images



Immunohistochemistry

Image 1. Immunohistochemistry analysis using Rabbit Anti-MCL 1 Polyclonal Antibody (ABIN5695933). Tissue: Colon Cancer. Species: Human. Fixation: Formalin Fixed Paraffin-Embedded. Primary Antibody: Rabbit Anti-MCL 1 Polyclonal Antibody (ABIN5695933) at 1:50 for 30 min at RT. Counterstain: Hematoxylin. Magnification: 10X. HRP-DAB Detection.



Western Blotting

Image 2. Western blot analysis of Rat, Mouse Liver showing detection of 37.3 kDa MCL1 protein using Rabbit Anti-MCL1 Polyclonal Antibody (ABIN5695933). Lane 1: Molecular Weight Ladder (MW). Lane 2: Rat Liver. Lane 3: Mouse Liver . Load: 15 µg. Block: 5 % Skim Milk powder in TBST. Primary Antibody: Rabbit Anti-MCL1 Polyclonal Antibody (ABIN5695933) at 1:1000 for 2 hours at RT with shaking. Secondary Antibody: Goat Anti-Rabbit IgG: HRP at 1:5000 for 1 hour at RT. Color Development: ECL solution for 5 min at RT. Predicted/Observed Size: 37.3 kDa . Other Band(s): 28.6 kDa .