



[Go to Product page](#)

Datasheet for ABIN5695972

anti-PKC gamma antibody (AA 150-250) (PerCP)

2 Images

Overview

Quantity:	100 µg
Target:	PKC gamma (PRKCG)
Binding Specificity:	AA 150-250
Reactivity:	Human, Mouse, Rat
Host:	Rabbit
Clonality:	Polyclonal
Conjugate:	This PKC gamma antibody is conjugated to PerCP
Application:	Western Blotting (WB), Immunohistochemistry (IHC)

Product Details

Immunogen:	Synthetic peptide from the mid-protein of Human PRKCG (aa. 150-250)
Specificity:	Detects 62 kDa, 40 kDa. 62 kDa band is isoform 2, band at 40 kDa is a degradation product.
Purification:	Peptide Affinity Purified

Target Details

Target:	PKC gamma (PRKCG)
Alternative Name:	PRKCG (PRKCG Products)
Gene ID:	5582
NCBI Accession:	NP_001303258
UniProt:	P05129

Target Details

Pathways: [WNT Signaling](#), [EGFR Signaling Pathway](#), [Neurotrophin Signaling Pathway](#), [Thyroid Hormone Synthesis](#), [Myometrial Relaxation and Contraction](#), [G-protein mediated Events](#), [Positive Regulation of Response to DNA Damage Stimulus](#), [Interaction of EGFR with phospholipase C-gamma](#), [Thromboxane A2 Receptor Signaling](#), [VEGF Signaling](#)

Application Details

Application Notes:

- WB (1:1000)
- IHC (1:50)
- optimal dilutions for assays should be determined by the user.

Comment: A 1:1000 dilution of ABIN5695972 was sufficient for detection of PRKCG in 15 µg of mouse Brain cell lysates by ECL immunoblot analysis using goat anti-rabbit IgG:HRP as the secondary antibody.

Restrictions: For Research Use only

Handling

Format: Liquid

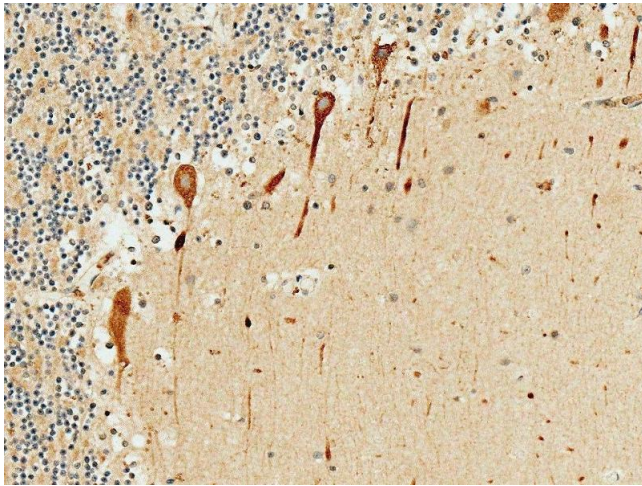
Concentration: 1 mg/mL

Buffer: PBS pH 7.4, 50 % glycerol, 0.09 % Sodium Azide

Preservative: Sodium azide

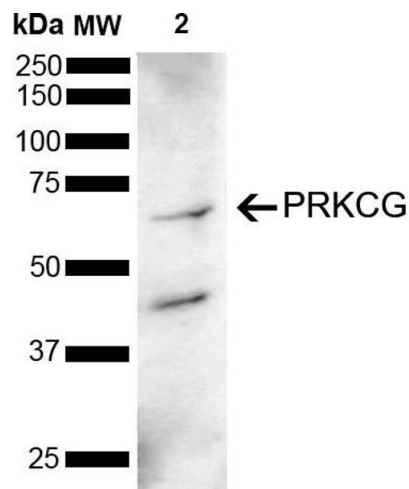
Precaution of Use: This product contains Sodium azide: a POISONOUS AND HAZARDOUS SUBSTANCE, which should be handled by trained staff only.

Storage: -20 °C



Immunohistochemistry

Image 1. Immunohistochemistry analysis using Rabbit Anti-PKC Gamma Polyclonal Antibody (ABIN5695972). Tissue: Cerebellum. Species: Human. Fixation: Formalin Fixed Paraffin-Embedded. Primary Antibody: Rabbit Anti-PKC Gamma Polyclonal Antibody (ABIN5695972) at 1:50 for 30 min at RT. Counterstain: Hematoxylin. Magnification: 20X. HRP-DAB Detection.



Western Blotting

Image 2. Western blot analysis of Mouse Brain showing detection of 78 kDa PRKCG protein using Rabbit Anti-PRKCG Polyclonal Antibody (ABIN5695972). Lane 1: Molecular Weight Ladder (MW). Lane 2: Mouse Brain . Load: 15 µg. Block: 5 % Skim Milk powder in TBST. Primary Antibody: Rabbit Anti-PRKCG Polyclonal Antibody (ABIN5695972) at 1:1000 for 2 hours at RT with shaking. Secondary Antibody: Goat Anti-Rabbit IgG: HRP at 1:5000 for 1 hour at RT. Color Development: ECL solution for 5 min at RT. Predicted/Observed Size: 78 kDa. Other Band(s): 62 kDa, 40 kDa.