



[Go to Product page](#)

Datasheet for ABIN5696050

anti-LRP1 antibody (AA 160-260) (Alkaline Phosphatase (AP))

2 Images

Overview

Quantity:	100 µg
Target:	LRP1
Binding Specificity:	AA 160-260
Reactivity:	Human, Mouse, Rat
Host:	Rabbit
Clonality:	Polyclonal
Conjugate:	This LRP1 antibody is conjugated to Alkaline Phosphatase (AP)
Application:	Western Blotting (WB), Immunohistochemistry (IHC)

Product Details

Immunogen:	Synthetic peptide from the N-terminal of Human Low-density lipoprotein receptor-related protein 1 (aa. 160-260)
Specificity:	Detects 80 kDa. Band at 80 kDa is a membrane spanning subunit.
Purification:	Peptide Affinity Purified

Target Details

Target:	LRP1
Alternative Name:	LRP-1 (LRP1 Products)
Gene ID:	4035
NCBI Accession:	NP_002323

Target Details

UniProt: [Q07954](#)

Pathways: [Smooth Muscle Cell Migration, Platelet-derived growth Factor Receptor Signaling](#)

Application Details

Application Notes:

- WB (1:1000)
- IHC (1:50)
- optimal dilutions for assays should be determined by the user.

Comment: A 1:1000 dilution of ABIN5696050 was sufficient for detection of LRP-1 in 15 µg of mouse Brain cell lysates by ECL immunoblot analysis using goat anti-rabbit IgG:HRP as the secondary antibody.

Restrictions: For Research Use only

Handling

Format: Liquid

Concentration: 1 mg/mL

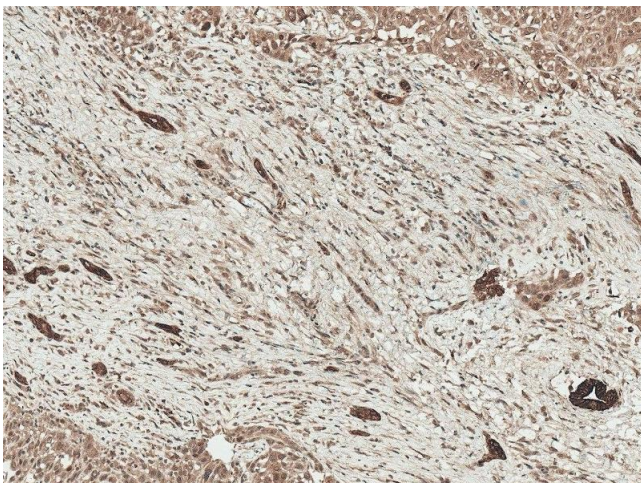
Buffer: PBS pH 7.4, 50 % glycerol, 0.09 % Sodium Azide

Preservative: Sodium azide

Precaution of Use: This product contains Sodium azide: a POISONOUS AND HAZARDOUS SUBSTANCE, which should be handled by trained staff only.

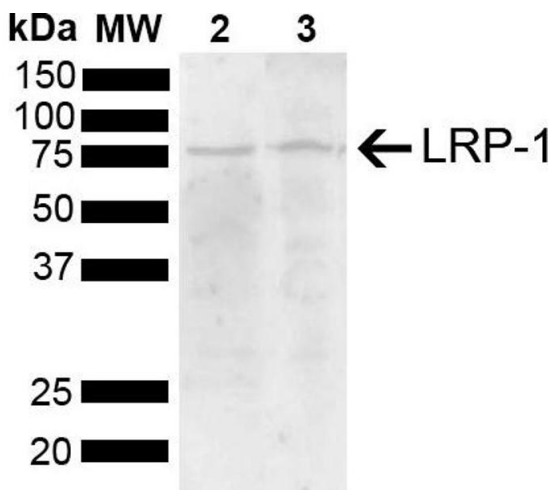
Storage: -20 °C

Images



Immunohistochemistry

Image 1. Immunohistochemistry analysis using Rabbit Anti-LRP1 Polyclonal Antibody (ABIN5696050). Tissue: Liver. Species: Human. Fixation: Formalin Fixed Paraffin-Embedded. Primary Antibody: Rabbit Anti-LRP1 Polyclonal Antibody (ABIN5696050) at 1:50 for 30 min at RT. Counterstain: Hematoxylin. Magnification: 10X. HRP-DAB Detection.



Western Blotting

Image 2. Western blot analysis of Mouse, Rat Brain showing detection of 504.6 kDa LRP-1 protein using Rabbit Anti-LRP-1 Polyclonal Antibody (ABIN5696050). Lane 1: Molecular Weight Ladder (MW). Lane 2: Mouse Brain. Lane 3: Rat Brain. Load: 15 µg. Block: 5 % Skim Milk powder in TBST. Primary Antibody: Rabbit Anti-LRP-1 Polyclonal Antibody (ABIN5696050) at 1:1000 for 2 hours at RT with shaking. Secondary Antibody: Goat Anti-Rabbit IgG: HRP at 1:5000 for 1 hour at RT. Color Development: ECL solution for 5 min at RT. Predicted/Observed Size: 504.6 kDa. Other Band(s): 80 kDa.