



[Go to Product page](#)

Datasheet for ABIN5696099

## anti-SFRP2 antibody (AA 195-295) (PE)

### 2 Images

#### Overview

Quantity:	100 µg
Target:	SFRP2
Binding Specificity:	AA 195-295
Reactivity:	Human, Mouse
Host:	Rabbit
Clonality:	Polyclonal
Conjugate:	This SFRP2 antibody is conjugated to PE
Application:	Western Blotting (WB), Immunohistochemistry (IHC)

#### Product Details

Immunogen:	Synthetic peptide from the C-terminal of Human Secreted frizzled-related protein 2 (aa. 195-295)
Specificity:	Detects 37 kDa.
Purification:	Peptide Affinity Purified

#### Target Details

Target:	SFRP2
Alternative Name:	SFRP2 ( <a href="#">SFRP2 Products</a> )
Gene ID:	6423
NCBI Accession:	<a href="#">NP_003004</a>

## Target Details

---

UniProt: [Q96HF1](#)

---

Pathways: [WNT Signaling](#), [Tube Formation](#), [Positive Regulation of Endopeptidase Activity](#), [Negative Regulation of intrinsic apoptotic Signaling](#), [Positive Regulation of fat Cell Differentiation](#)

---

## Application Details

---

Application Notes:

- WB (1:1000)
- IHC (1:50)
- optimal dilutions for assays should be determined by the user.

---

Comment: A 1:1000 dilution of ABIN5696099 was sufficient for detection of SFRP2 in 15 µg of mouse Brain cell lysates by ECL immunoblot analysis using goat anti-rabbit IgG:HRP as the secondary antibody.

---

Restrictions: For Research Use only

---

## Handling

---

Format: Liquid

---

Concentration: 1 mg/mL

---

Buffer: PBS pH 7.4, 50 % glycerol, 0.09 % Sodium Azide

---

Preservative: Sodium azide

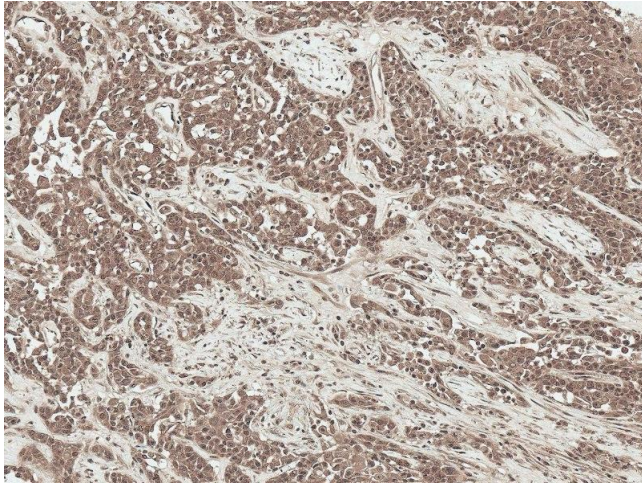
---

Precaution of Use: This product contains Sodium azide: a POISONOUS AND HAZARDOUS SUBSTANCE, which should be handled by trained staff only.

---

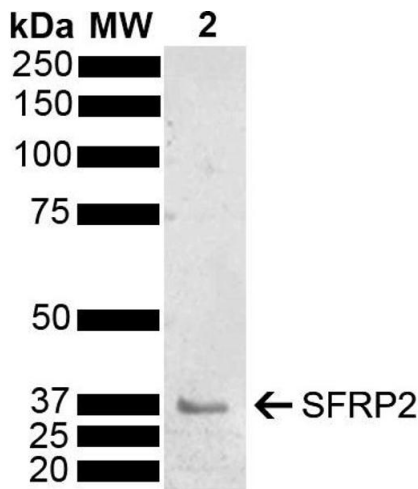
Storage: -20 °C

---



### Immunohistochemistry

**Image 1.** Immunohistochemistry analysis using Rabbit Anti-SFRP2 Polyclonal Antibody (ABIN5696099). Tissue: Liver. Species: Human. Fixation: Formalin Fixed Paraffin-Embedded. Primary Antibody: Rabbit Anti-SFRP2 Polyclonal Antibody (ABIN5696099) at 1:50 for 30 min at RT. Counterstain: Hematoxylin. Magnification: 20X. HRP-DAB Detection.



### Western Blotting

**Image 2.** Western blot analysis of Mouse Brain showing detection of 33.5 kDa SFRP2 protein using Rabbit Anti-SFRP2 Polyclonal Antibody (ABIN5696099). Lane 1: Molecular Weight Ladder (MW). Lane 2: Mouse Brain . Load: 15 µg. Block: 5 % Skim Milk powder in TBST. Primary Antibody: Rabbit Anti-SFRP2 Polyclonal Antibody (ABIN5696099) at 1:1000 for 2 hours at RT with shaking. Secondary Antibody: Goat Anti-Rabbit IgG: HRP at 1:5000 for 1 hour at RT. Color Development: ECL solution for 5 min at RT. Predicted/Observed Size: 33.5 kDa. Other Band(s): 37 kDa.