



[Go to Product page](#)

Datasheet for ABIN5696202

anti-RICTOR antibody (AA 1060-1160) (Biotin)

2 Images

Overview

Quantity:	100 µg
Target:	RICTOR
Binding Specificity:	AA 1060-1160
Reactivity:	Human, Mouse
Host:	Rabbit
Clonality:	Polyclonal
Conjugate:	This RICTOR antibody is conjugated to Biotin
Application:	Western Blotting (WB), Immunohistochemistry (IHC)

Product Details

Immunogen:	Synthetic peptide from the mid-protein of Human Rapamycin-insensitive companion of mTOR (aa. 1060-1160)
Specificity:	Detects 192 kDa.
Purification:	Peptide Affinity Purified

Target Details

Target:	RICTOR
Alternative Name:	RICTOR (RICTOR Products)
Gene ID:	253260
NCBI Accession:	NP_001272368

Target Details

UniProt: [Q6R327](#)

Pathways: [Fc-epsilon Receptor Signaling Pathway](#), [EGFR Signaling Pathway](#), [Neurotrophin Signaling Pathway](#), [Regulation of Actin Filament Polymerization](#), [CXCR4-mediated Signaling Events](#)

Application Details

Application Notes:

- WB (1:1000)
- optimal dilutions for assays should be determined by the user.

Comment: A 1:1000 dilution of ABIN5696202 was sufficient for detection of RICTOR in 15 µg of mouse Brain cell lysates by ECL immunoblot analysis using goat anti-rabbit IgG:HRP as the secondary antibody.

Restrictions: For Research Use only

Handling

Format: Liquid

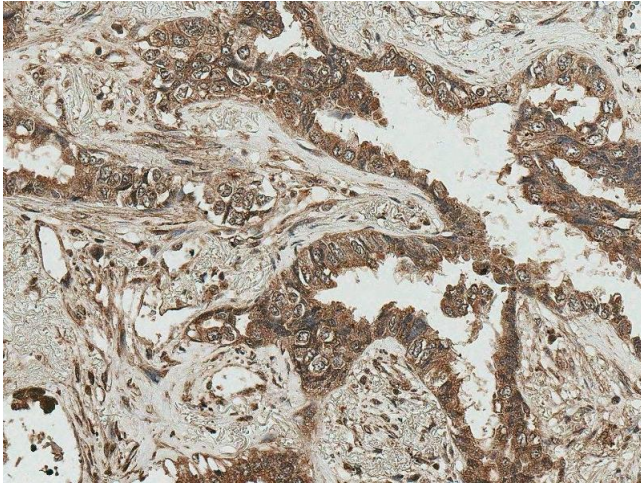
Concentration: 1 mg/mL

Buffer: PBS pH 7.4, 50 % glycerol, 0.09 % Sodium Azide

Preservative: Sodium azide

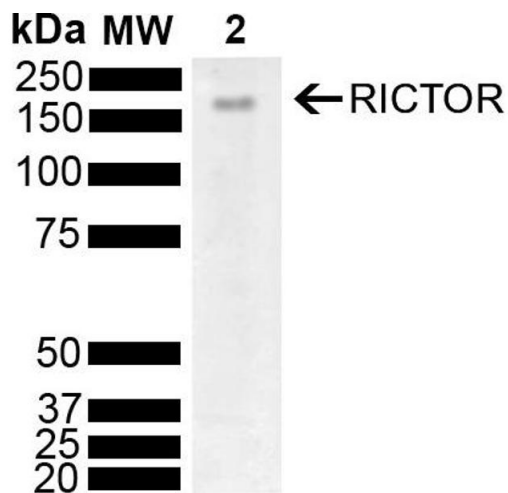
Precaution of Use: This product contains Sodium azide: a POISONOUS AND HAZARDOUS SUBSTANCE, which should be handled by trained staff only.

Storage: -20 °C



Immunohistochemistry

Image 1. Immunohistochemistry analysis using Rabbit Anti-RICTOR Polyclonal Antibody (ABIN5696202). Tissue: Lung Cancer. Species: Human. Fixation: Formalin Fixed Paraffin-Embedded. Primary Antibody: Rabbit Anti-RICTOR Polyclonal Antibody (ABIN5696202) at 1:50 for 30 min at RT. Counterstain: Hematoxylin. Magnification: 20X. HRP-DAB Detection.



Western Blotting

Image 2. Western blot analysis of Mouse Brain showing detection of 192 kDa RICTOR protein using Rabbit Anti-RICTOR Polyclonal Antibody (ABIN5696202). Lane 1: Molecular Weight Ladder (MW). Lane 2: Mouse Brain. Load: 10 µg. Block: 5% Skim Milk powder in TBST. Primary Antibody: Rabbit Anti-RICTOR Polyclonal Antibody (ABIN5696202) at 1:1000 for 2 hours at RT with shaking. Secondary Antibody: Goat Anti-Rabbit IgG: HRP at 1:5000 for 1 hour at RT. Color Development: ECL solution for 5 min at RT. Predicted/Observed Size: 192 kDa.