

Datasheet for ABIN5696277

ATP2A3 ELISA Kit**1** Image[Go to Product page](#)

Overview

Quantity:	96 tests
Target:	ATP2A3
Reactivity:	Mouse
Method Type:	Sandwich ELISA
Detection Range:	0.15 ng/mL - 10 ng/mL
Minimum Detection Limit:	0.15 ng/mL
Application:	ELISA

Product Details

Analytical Method:	Quantitative
Detection Method:	Colorimetric
Sensitivity:	0094 ng/mL

Target Details

Target:	ATP2A3
Alternative Name:	Atp2a3 (Sarcoplasmic/endoplasmic reticulum calcium ATPase 3) (ATP2A3 Products)
Pathways:	Myometrial Relaxation and Contraction, Ribonucleoside Biosynthetic Process

Application Details

Application Notes:	Optimal working dilution should be determined by the investigator.
--------------------	--

Application Details

Comment: Sandwich ELISA, Double Antibody

Plate: Pre-coated

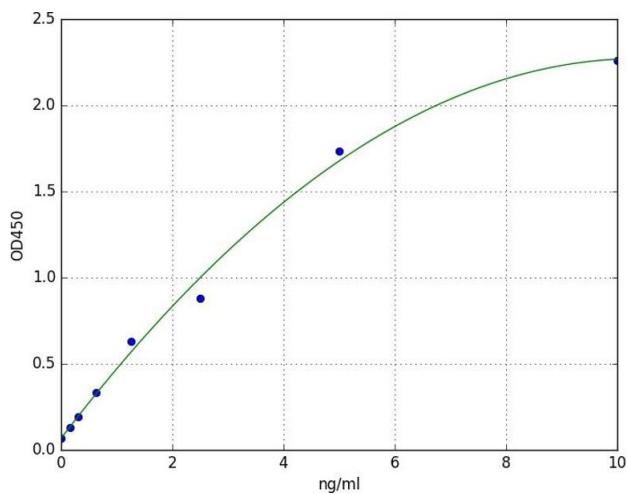
Restrictions: For Research Use only

Handling

Storage: 4 °C

Expiry Date: 6 months

Images



ELISA

Image 1. A typical standard curve