

Datasheet for ABIN5696313

CAMK2D ELISA Kit

1 Image

[Go to Product page](#)

Overview

Quantity:	96 tests
Target:	CAMK2D
Reactivity:	Human
Method Type:	Sandwich ELISA
Detection Range:	0.15 ng/mL - 10 ng/mL
Minimum Detection Limit:	0.15 ng/mL
Application:	ELISA

Product Details

Analytical Method:	Quantitative
Detection Method:	Colorimetric
Sensitivity:	0094 ng/mL

Target Details

Target:	CAMK2D
Alternative Name:	CaMKII delta (CAMK2D Products)
Pathways:	WNT Signaling , Interferon-gamma Pathway , Myometrial Relaxation and Contraction , Smooth Muscle Cell Migration

Application Details

Application Notes: Optimal working dilution should be determined by the investigator.

Comment: Sandwich ELISA, Double Antibody

Plate: Pre-coated

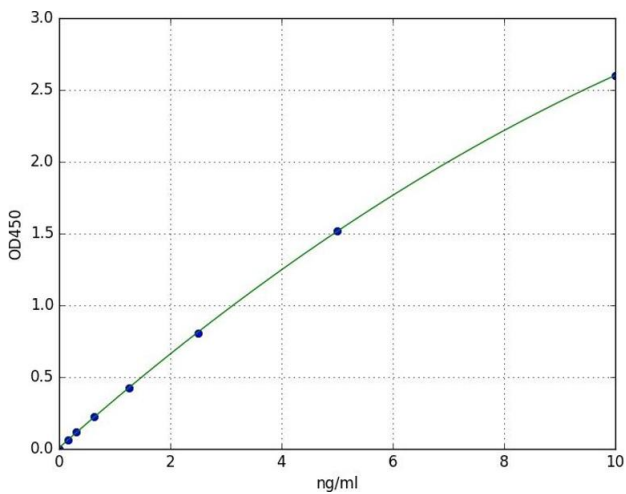
Restrictions: For Research Use only

Handling

Storage: 4 °C

Expiry Date: 6 months

Images



ELISA

Image 1. A typical standard curve