

Datasheet for ABIN5696332

**Superoxide dismutase copper chaperone ELISA Kit**[Go to Product page](#)**1** Image

## Overview

Quantity:	96 tests
Target:	Superoxide dismutase copper chaperone (CCS)
Reactivity:	Mouse
Method Type:	Sandwich ELISA
Detection Range:	78.13 pg/mL - 5000 pg/mL
Minimum Detection Limit:	78.13 pg/mL
Application:	ELISA

## Product Details

Analytical Method:	Quantitative
Detection Method:	Colorimetric
Sensitivity:	46875 pg/mL

## Target Details

Target:	Superoxide dismutase copper chaperone (CCS)
Alternative Name:	Ccs (Copper chaperone for superoxide dismutase) ( <a href="#">CCS Products</a> )
Pathways:	<a href="#">Transition Metal Ion Homeostasis</a>

## Application Details

Application Notes:	Optimal working dilution should be determined by the investigator.
--------------------	--

## Application Details

Comment: Sandwich ELISA, Double Antibody

Plate: Pre-coated

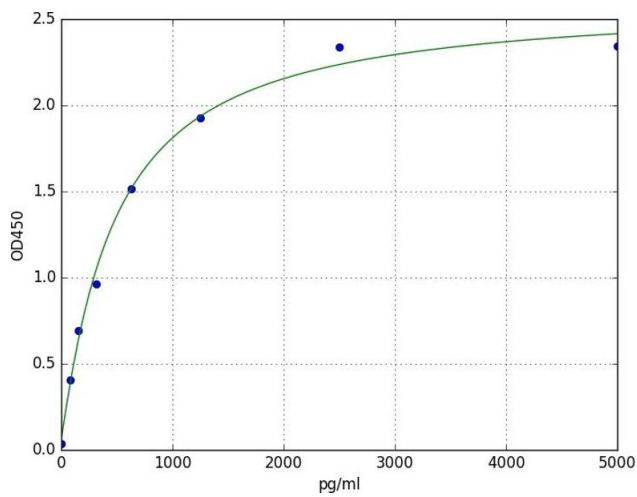
Restrictions: For Research Use only

## Handling

Storage: 4 °C

Expiry Date: 6 months

## Images



### ELISA

**Image 1.** A typical standard curve