

Datasheet for ABIN5696348

**G Protein-Coupled Receptor 116 ELISA Kit**[Go to Product page](#)**1** Image

## Overview

Quantity:	96 tests
Target:	G Protein-Coupled Receptor 116 (GPR116)
Reactivity:	Human
Method Type:	Sandwich ELISA
Detection Range:	0.31 ng/mL - 20 ng/mL
Minimum Detection Limit:	0.31 ng/mL
Application:	ELISA

## Product Details

Analytical Method:	Quantitative
Detection Method:	Colorimetric
Sensitivity:	0188 ng/mL

## Target Details

Target:	G Protein-Coupled Receptor 116 (GPR116)
Alternative Name:	GPR116 (G-protein coupled receptor 116) ( <a href="#">GPR116 Products</a> )
Pathways:	<a href="#">Carbohydrate Homeostasis</a>

## Application Details

Application Notes:	Optimal working dilution should be determined by the investigator.
--------------------	--

## Application Details

Comment: Sandwich ELISA, Double Antibody

Plate: Pre-coated

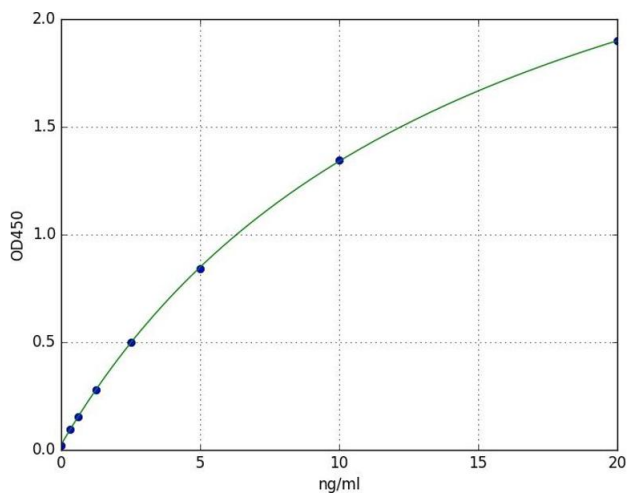
Restrictions: For Research Use only

## Handling

Storage: 4 °C

Expiry Date: 6 months

## Images



### ELISA

**Image 1.** A typical standard curve