

Datasheet for ABIN5696373
LIM Domain Kinase 1 ELISA Kit



[Go to Product page](#)

1 Image

Overview

Quantity:	96 tests
Target:	LIM Domain Kinase 1 (LIMK1)
Reactivity:	Human
Method Type:	Sandwich ELISA
Detection Range:	0.31 ng/mL - 20 ng/mL
Minimum Detection Limit:	0.31 ng/mL
Application:	ELISA

Product Details

Analytical Method:	Quantitative
Detection Method:	Colorimetric
Sensitivity:	0188 ng/mL

Target Details

Target:	LIM Domain Kinase 1 (LIMK1)
Alternative Name:	LIMK1 (LIM domain kinase 1) (LIMK1 Products)
Pathways:	Caspase Cascade in Apoptosis, Regulation of Cell Size, CXCR4-mediated Signaling Events

Application Details

Application Notes:	Optimal working dilution should be determined by the investigator.
--------------------	--

Application Details

Comment: Sandwich ELISA, Double Antibody

Plate: Pre-coated

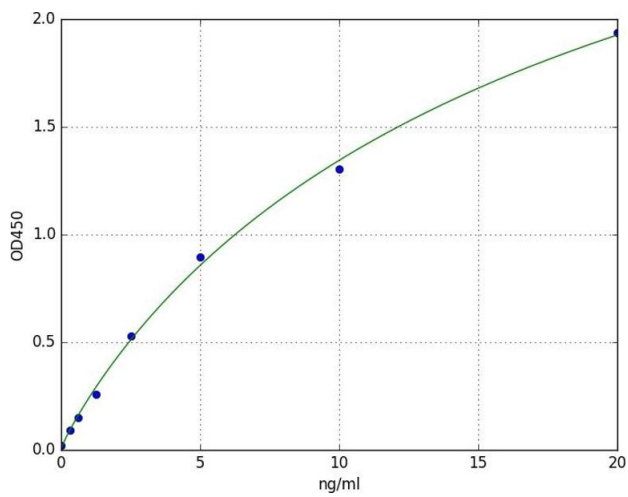
Restrictions: For Research Use only

Handling

Storage: 4 °C

Expiry Date: 6 months

Images



ELISA

Image 1. A typical standard curve