

Datasheet for ABIN5696375 Lamin A/C ELISA Kit



[Go to Product page](#)

1 Image

Overview

Quantity:	96 tests
Target:	Lamin A/C (LMNA)
Reactivity:	Mouse
Method Type:	Sandwich ELISA
Detection Range:	78.13 pg/mL - 5000 pg/mL
Minimum Detection Limit:	78.13 pg/mL
Application:	ELISA

Product Details

Analytical Method:	Quantitative
Detection Method:	Colorimetric
Sensitivity:	46875 pg/mL

Target Details

Target:	Lamin A/C (LMNA)
Alternative Name:	Lmna (Lamin-A) (LMNA Products)
Pathways:	Apoptosis , Caspase Cascade in Apoptosis , ER-Nucleus Signaling , Protein targeting to Nucleus

Application Details

Application Notes:	Optimal working dilution should be determined by the investigator.
--------------------	--------------------------------------------------------------------

Application Details

Comment: Sandwich ELISA, Double Antibody

Plate: Pre-coated

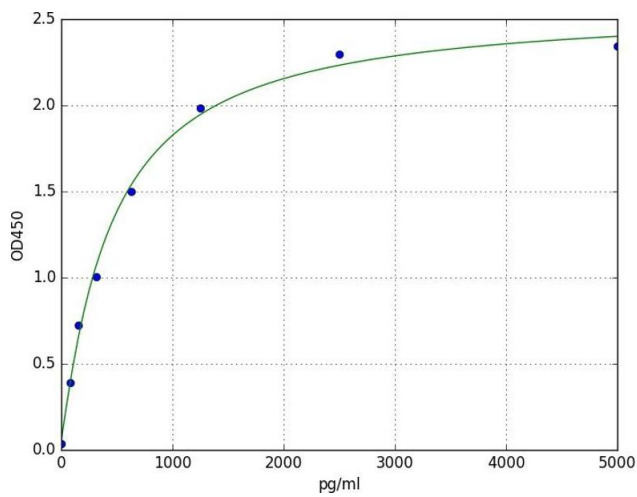
Restrictions: For Research Use only

Handling

Storage: 4 °C

Expiry Date: 6 months

Images



ELISA

Image 1. A typical standard curve