

Datasheet for ABIN5696420

**SAA4 ELISA Kit**[Go to Product page](#)**1** Image

## Overview

|                          |                       |
|--------------------------|-----------------------|
| Quantity:                | 96 tests              |
| Target:                  | SAA4                  |
| Reactivity:              | Mouse                 |
| Method Type:             | Sandwich ELISA        |
| Detection Range:         | 0.15 ng/mL - 10 ng/mL |
| Minimum Detection Limit: | 0.15 ng/mL            |
| Application:             | ELISA                 |

## Product Details

|                    |              |
|--------------------|--------------|
| Analytical Method: | Quantitative |
| Detection Method:  | Colorimetric |
| Sensitivity:       | 0094 ng/mL   |

## Target Details

|                   |  |
|-------------------|--|
| Target:           | SAA4   |
| Alternative Name: | Saa4 (Serum amyloid A-4 protein) ( <a href="#">SAA4 Products</a> ) |

## Application Details

|                    |  |
|--------------------|--|
| Application Notes: | Optimal working dilution should be determined by the investigator. |
| Comment:           | Sandwich ELISA, Double Antibody                                    |

## Application Details

Plate: Pre-coated

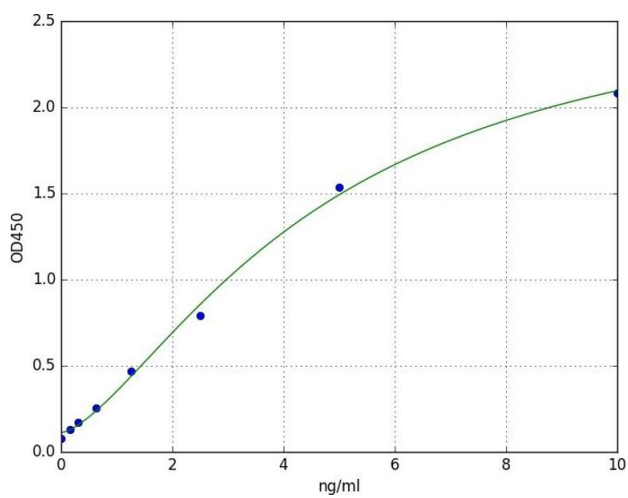
Restrictions: For Research Use only

## Handling

Storage: 4 °C

Expiry Date: 6 months

## Images



### ELISA

**Image 1.** A typical standard curve