



[Go to Product page](#)

Datasheet for ABIN5696458
beta2-GP1 Ab IgG ELISA Kit

1 Image

Overview

Quantity:	96 tests
Target:	beta2-GP1 Ab IgG
Reactivity:	Human
Method Type:	Indirect ELISA
Detection Range:	0.781 ng/mL - 50 ng/mL
Minimum Detection Limit:	0.781 ng/mL
Application:	ELISA

Product Details

Purpose:	For quantitative detection of β 2-GP1 Ab IgG in serum, plasma, tissue homogenates.
Sample Type:	Plasma, Serum, Tissue Homogenate
Analytical Method:	Quantitative
Detection Method:	Colorimetric
Specificity:	This assay has high sensitivity and excellent specificity for detection of β 2-GP1 Ab IgG. No significant cross-reactivity or interference between β 2-GP1 Ab IgG and analogues was observed. Note: Limited by current skills and knowledge, it is difficult for us to complete the cross-reactivity detection between β 2-GP1 Ab IgG and all the analogues, therefore, cross reaction may still exist.
Sensitivity:	0.469 ng/mL

Target Details

Target:	beta2-GP1 Ab IgG
Alternative Name:	beta2-GP1 Ab IgG (beta2-Glycoprotein 1 Antibody IgG) (beta2-GP1 Ab IgG Products)
Target Type:	Antibody
Background:	β 2-GP1 Ab IgG

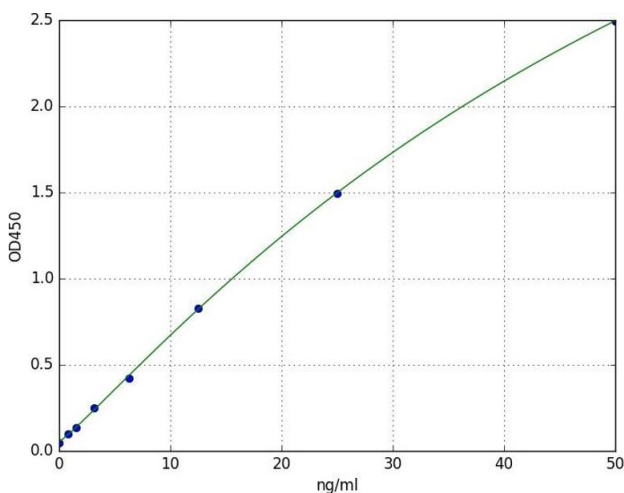
Application Details

Application Notes:	Optimal working dilution should be determined by the investigator.
Comment:	Sandwich ELISA, Double Antigen
Plate:	Pre-coated
Restrictions:	For Research Use only

Handling

Storage:	4 °C
Storage Comment:	<ol style="list-style-type: none">1. For unopened kit: All the reagents should be kept according to the labels on vials. The Reference Standard and the 96-well stripe plate should be stored at -20 °C upon receipt while the other reagents should be stored at 4 °C.2. For used kit: When the kit is used, the remaining reagents need to be stored according to the above storage condition. Besides, please return the unused wells to the foil pouch containing the desiccant pack, and zip-seal the foil pouch.
Expiry Date:	6 months

Images



ELISA

Image 1. A typical standard curve