

Datasheet for ABIN5696459
beta2-GP1 Ab IgM ELISA Kit[Go to Product page](#)

1 Image

Overview

| | |
|--------------------------|------------------------|
| Quantity: | 96 tests |
| Target: | beta2-GP1 Ab IgM |
| Reactivity: | Human |
| Method Type: | Sandwich ELISA |
| Detection Range: | 0.781 ng/mL - 50 ng/mL |
| Minimum Detection Limit: | 0.781 ng/mL |
| Application: | ELISA |

Product Details

| | |
|--------------------|--|
| Purpose: | For quantitative detection of β 2-GP1 Ab IgM in serum, plasma, tissue homogenates. |
| Sample Type: | Plasma, Serum, Tissue Homogenate |
| Analytical Method: | Quantitative |
| Detection Method: | Colorimetric |
| Specificity: | This assay has high sensitivity and excellent specificity for detection of β 2-GP1 Ab IgM. No significant cross- reactivity or interference between β 2-GP1 Ab IgM and analogues was observed. Note: Limited by current skills and knowledge, it is difficult for us to complete the cross-reactivity detection between β 2-GP1 Ab IgM and all the analogues, therefore, cross reaction may still exist. |
| Sensitivity: | 0.469 ng/mL |

Target Details

| | |
|-------------------|--|
| Target: | beta2-GP1 Ab IgM |
| Alternative Name: | beta2-GP1 Ab IgM (beta2-Glycoprotein 1 Antibody IgM) (beta2-GP1 Ab IgM Products) |
| Target Type: | Antibody |
| Background: | β2-GP1 Ab IgM |

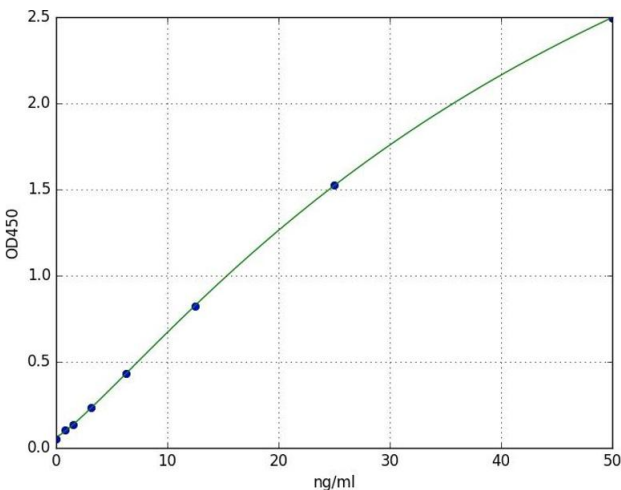
Application Details

| | |
|--------------------|--|
| Application Notes: | Optimal working dilution should be determined by the investigator. |
| Comment: | Sandwich ELISA, Double Antigen |
| Plate: | Pre-coated |
| Restrictions: | For Research Use only |

Handling

| | |
|------------------|---|
| Storage: | 4 °C |
| Storage Comment: | <ol style="list-style-type: none">1. For unopened kit: All the reagents should be kept according to the labels on vials. The Reference Standard and the 96-well stripe plate should be stored at -20 °C upon receipt while the other reagents should be stored at 4 °C.2. For used kit: When the kit is used, the remaining reagents need to be stored according to the above storage condition. Besides, please return the unused wells to the foil pouch containing the desiccant pack, and zip-seal the foil pouch. |
| Expiry Date: | 6 months |

Images



ELISA

Image 1. A typical standard curve