



[Go to Product page](#)

Datasheet for ABIN5696460  
**beta2-GP1 Ab IgA ELISA Kit**

1 Image

### Overview

Quantity:	96 tests
Target:	beta2-GP1 Ab IgA
Reactivity:	Human
Method Type:	Sandwich ELISA
Detection Range:	0.313 ng/mL - 20 ng/mL
Minimum Detection Limit:	0.313 ng/mL
Application:	ELISA

### Product Details

Purpose:	For quantitative detection of $\beta$ 2-GP1 Ab IgA in serum, plasma, tissue homogenates.
Sample Type:	Plasma, Serum, Tissue Homogenate
Analytical Method:	Quantitative
Detection Method:	Colorimetric
Specificity:	This assay has high sensitivity and excellent specificity for detection of $\beta$ 2-GP1 Ab IgA. No significant cross-reactivity or interference between $\beta$ 2-GP1 Ab IgA and analogues was observed. Note: Limited by current skills and knowledge, it is difficult for us to complete the cross-reactivity detection between $\beta$ 2-GP1 Ab IgA and all the analogues, therefore, cross reaction may still exist.
Sensitivity:	0.188 ng/mL

## Target Details

Target:	beta2-GP1 Ab IgA
Alternative Name:	beta2-GP1 Ab IgA (beta2-Glycoprotein 1 antibody IgA) ( <a href="#">beta2-GP1 Ab IgA Products</a> )
Target Type:	Antibody
Background:	$\beta$ 2-GP1 Ab IgA

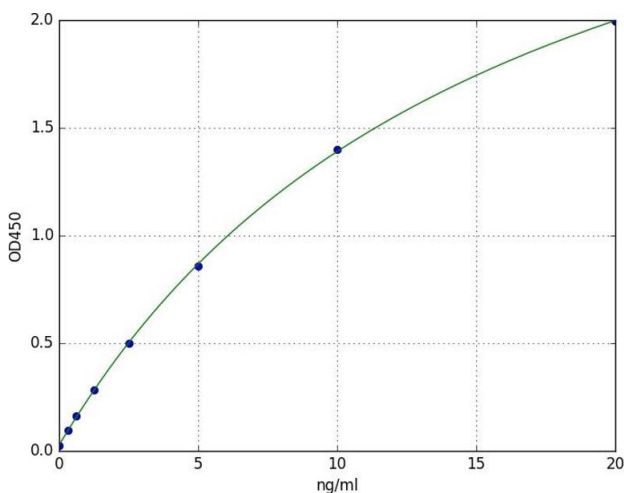
## Application Details

Application Notes:	Optimal working dilution should be determined by the investigator.
Comment:	Sandwich ELISA, Double Antigen
Plate:	Pre-coated
Restrictions:	For Research Use only

## Handling

Storage:	4 °C
Storage Comment:	<ol style="list-style-type: none"><li>1. For unopened kit: All the reagents should be kept according to the labels on vials. The Reference Standard and the 96-well stripe plate should be stored at -20 °C upon receipt while the other reagents should be stored at 4 °C.</li><li>2. For used kit: When the kit is used, the remaining reagents need to be stored according to the above storage condition. Besides, please return the unused wells to the foil pouch containing the desiccant pack, and zip-seal the foil pouch.</li></ol>
Expiry Date:	6 months

## Images



### ELISA

**Image 1.** A typical standard curve