



[Go to Product page](#)

Datasheet for ABIN5696482

## OVA sIgE ELISA Kit

### 1 Image

#### Overview

Quantity:	96 tests
Target:	OVA sIgE
Reactivity:	Human
Method Type:	Indirect ELISA
Detection Range:	1.563 ng/mL - 100 ng/mL
Minimum Detection Limit:	1.563 ng/mL
Application:	ELISA

#### Product Details

Purpose:	For quantitative detection of OVA sIgE in serum, plasma, tissue homogenates.
Sample Type:	Plasma, Serum, Tissue Homogenate
Analytical Method:	Quantitative
Detection Method:	Colorimetric
Specificity:	This assay has high sensitivity and excellent specificity for detection of OVA sIgE. No significant cross-reactivity or interference between OVA sIgE and analogues was observed. Note: Limited by current skills and knowledge, it is difficult for us to complete the cross-reactivity detection between OVA sIgE and all the analogues, therefore, cross reaction may still exist.
Sensitivity:	0.938 ng/mL

#### Target Details

Target:	OVA sIgE
---------	----------

## Target Details

Alternative Name: OVA sIgE (Ovalbumin Specific IgE) ([OVA sIgE Products](#))

Background: OVA sIgE

## Application Details

Application Notes: Optimal working dilution should be determined by the investigator.

Comment: Indirect ELISA

Plate: Pre-coated

Restrictions: For Research Use only

## Handling

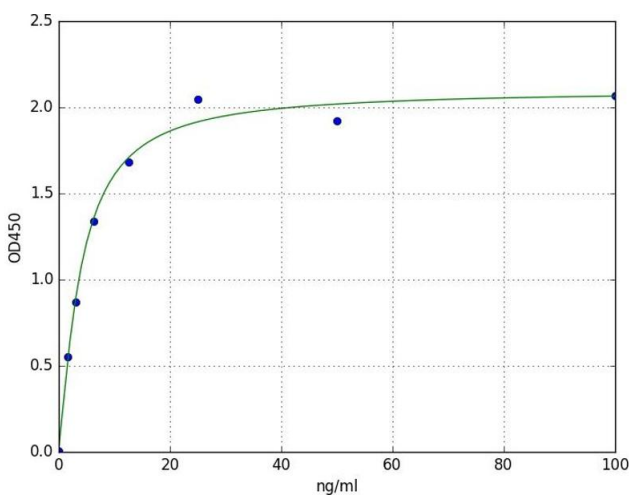
Storage: 4 °C

Storage Comment:

1. For unopened kit: All the reagents should be kept according to the labels on vials. The Reference Standard and the 96-well stripe plate should be stored at -20 °C upon receipt while the other reagents should be stored at 4 °C.
2. For used kit: When the kit is used, the remaining reagents need to be stored according to the above storage condition. Besides, please return the unused wells to the foil pouch containing the desiccant pack, and zip-seal the foil pouch.

Expiry Date: 6 months

## Images



### ELISA

**Image 1.** A typical standard curve