

Datasheet for ABIN5696637

ACSS1 ELISA Kit[Go to Product page](#)**1** Image

Overview

Quantity:	96 tests
Target:	ACSS1
Reactivity:	Human
Method Type:	Sandwich ELISA
Detection Range:	0.31 ng/mL - 20 ng/mL
Minimum Detection Limit:	0.31 ng/mL
Application:	ELISA

Product Details

Analytical Method:	Quantitative
Detection Method:	Colorimetric
Sensitivity:	0188 ng/mL

Target Details

Target:	ACSS1
Alternative Name:	ACSS1 (Acyl-CoA synthetase short-chain family member 1) (ACSS1 Products)

Application Details

Application Notes:	Optimal working dilution should be determined by the investigator.
Comment:	Sandwich ELISA, Double Antibody

Application Details

Plate: Pre-coated

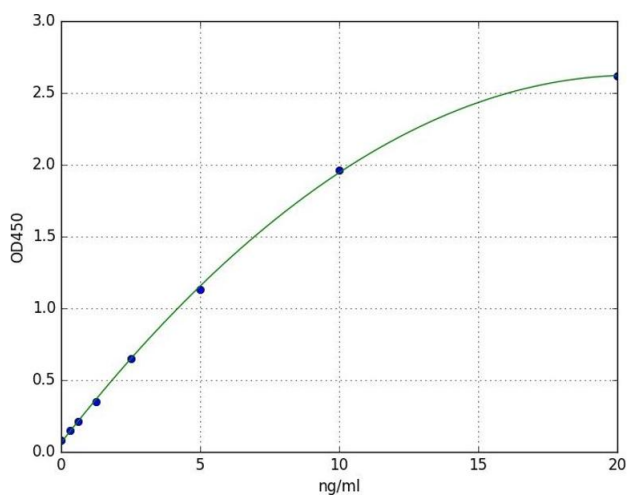
Restrictions: For Research Use only

Handling

Storage: 4 °C

Expiry Date: 6 months

Images



ELISA

Image 1. A typical standard curve