

Datasheet for ABIN5696646  
**14-3-3 gamma ELISA Kit**



[Go to Product page](#)

1 Image

## Overview

|                          |                       |
|--------------------------|-----------------------|
| Quantity:                | 96 tests              |
| Target:                  | 14-3-3 gamma (YWHAG1) |
| Reactivity:              | Human                 |
| Method Type:             | Sandwich ELISA        |
| Detection Range:         | 0.15 ng/mL - 10 ng/mL |
| Minimum Detection Limit: | 0.15 ng/mL            |
| Application:             | ELISA                 |

## Product Details

|                    |              |
|--------------------|--------------|
| Analytical Method: | Quantitative |
| Detection Method:  | Colorimetric |
| Sensitivity:       | 0094 ng/mL   |

## Target Details

|                   |                                                                |
|-------------------|----------------------------------------------------------------|
| Target:           | 14-3-3 gamma (YWHAG1)                                          |
| Alternative Name: | KCIP-1 (14-3-3 GAMMA) ( <a href="#">YWHAG1 Products</a> )      |
| Pathways:         | <a href="#">Myometrial Relaxation and Contraction, M Phase</a> |

## Application Details

|                    |                                                                    |
|--------------------|--------------------------------------------------------------------|
| Application Notes: | Optimal working dilution should be determined by the investigator. |
|--------------------|--------------------------------------------------------------------|

## Application Details

Comment: Sandwich ELISA, Double Antibody

Plate: Pre-coated

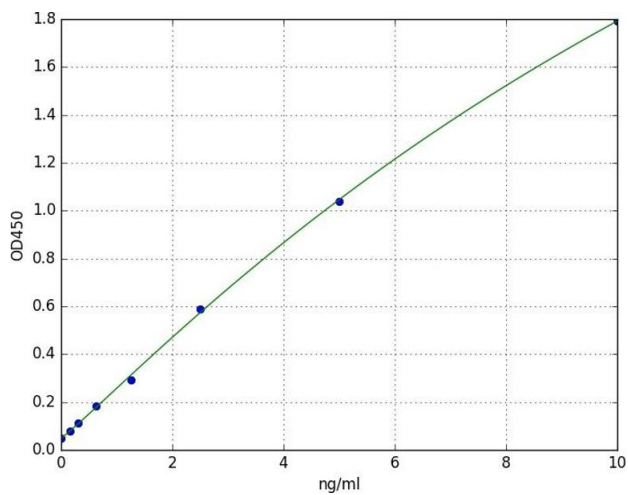
Restrictions: For Research Use only

## Handling

Storage: 4 °C

Expiry Date: 6 months

## Images



### ELISA

**Image 1.** A typical standard curve