

Datasheet for ABIN5696687

IGF2BP2 ELISA Kit[Go to Product page](#)**1** Image

Overview

| | |
|--------------------------|-----------------------|
| Quantity: | 96 tests |
| Target: | IGF2BP2 |
| Reactivity: | Human |
| Method Type: | Sandwich ELISA |
| Detection Range: | 0.15 ng/mL - 10 ng/mL |
| Minimum Detection Limit: | 0.15 ng/mL |
| Application: | ELISA |

Product Details

| | |
|--------------------|--------------|
| Analytical Method: | Quantitative |
| Detection Method: | Colorimetric |
| Sensitivity: | 0094 ng/mL |

Target Details

| | |
|-------------------|--|
| Target: | IGF2BP2 |
| Alternative Name: | IGF2BP2 (insulin-like growth factor 2 mRNA binding protein 2) (IGF2BP2 Products) |

Application Details

| | |
|--------------------|--|
| Application Notes: | Optimal working dilution should be determined by the investigator. |
| Comment: | Sandwich ELISA, Double Antibody |

Application Details

Plate: Pre-coated

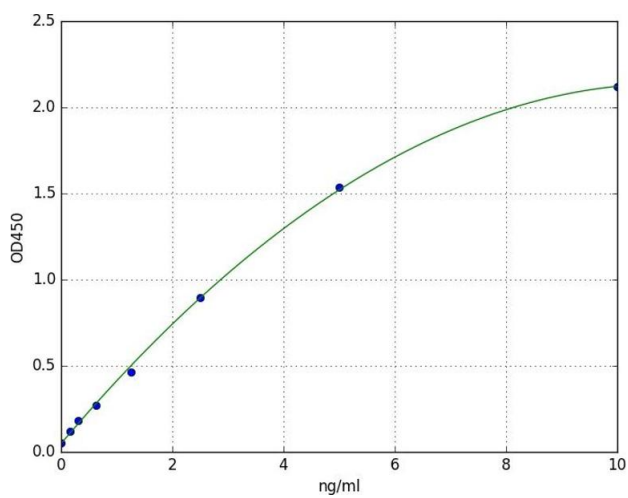
Restrictions: For Research Use only

Handling

Storage: 4 °C

Expiry Date: 6 months

Images



ELISA

Image 1. A typical standard curve