

Datasheet for ABIN5696694

LATS1 ELISA Kit[Go to Product page](#)**1** Image

Overview

Quantity:	96 tests
Target:	LATS1
Reactivity:	Human
Method Type:	Sandwich ELISA
Detection Range:	0.15 ng/mL - 10 ng/mL
Minimum Detection Limit:	0.15 ng/mL
Application:	ELISA

Product Details

Analytical Method:	Quantitative
Detection Method:	Colorimetric
Sensitivity:	0094 ng/mL

Target Details

Target:	LATS1
Alternative Name:	LATS1 (Serine/threonine-protein kinase LATS1) (LATS1 Products)
Pathways:	Regulation of Actin Filament Polymerization, Maintenance of Protein Location

Application Details

Application Notes:	Optimal working dilution should be determined by the investigator.
--------------------	--

Application Details

Comment: Sandwich ELISA, Double Antibody

Plate: Pre-coated

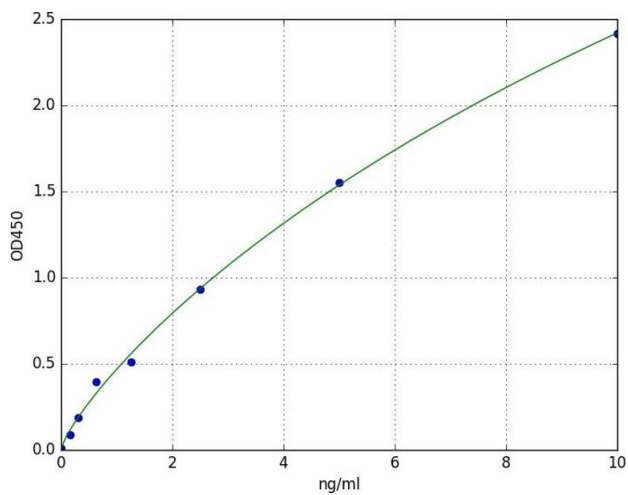
Restrictions: For Research Use only

Handling

Storage: 4 °C

Expiry Date: 6 months

Images



ELISA

Image 1. A typical standard curve