



[Go to Product page](#)

Datasheet for ABIN5706220

## Anti-C1q ELISA Kit

### 1 Image

#### Overview

Quantity:	96 tests
Target:	Anti-C1q
Reactivity:	Human
Method Type:	Sandwich ELISA
Detection Range:	1.563 ng/mL - 100 ng/mL
Minimum Detection Limit:	1.563 ng/mL
Application:	ELISA

#### Product Details

Purpose:	For quantitative detection of C1q-Ab in serum, plasma, tissue homogenates.
Sample Type:	Plasma, Serum, Tissue Homogenate
Analytical Method:	Quantitative
Detection Method:	Colorimetric
Specificity:	This assay has high sensitivity and excellent specificity for detection of C1q-Ab. No significant cross-reactivity or interference between C1q-Ab and analogues was observed. Note: Limited by current skills and knowledge, it is difficult for us to complete the cross-reactivity detection between C1q-Ab and all the analogues, therefore, cross reaction may still exist.
Sensitivity:	0.938 ng/mL

#### Target Details

Target:	Anti-C1q
---------	----------

## Target Details

Alternative Name: Anti-Complement 1q Antibody ([Anti-C1q Products](#))

Target Type: Antibody

Background: C1q-Ab

## Application Details

Application Notes: Optimal working dilution should be determined by the investigator.

Comment: Sandwich ELISA, Double Antigen

Plate: Pre-coated

Restrictions: For Research Use only

## Handling

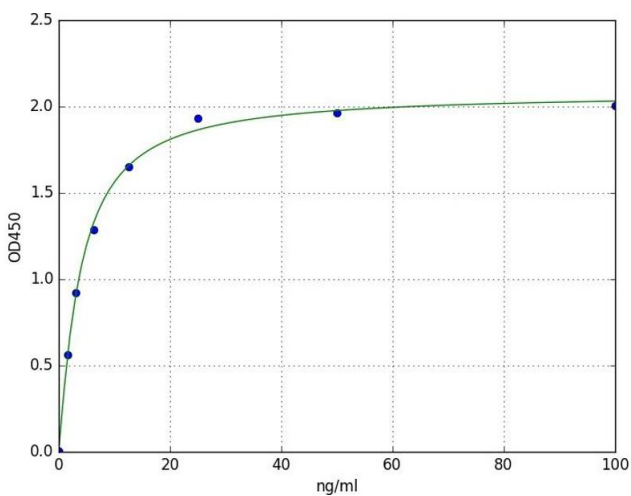
Storage: 4 °C

Storage Comment:

1. For unopened kit: All the reagents should be kept according to the labels on vials. The Reference Standard and the 96-well stripe plate should be stored at -20 °C upon receipt while the other reagents should be stored at 4 °C.
2. For used kit: When the kit is used, the remaining reagents need to be stored according to the above storage condition. Besides, please return the unused wells to the foil pouch containing the desiccant pack, and zip-seal the foil pouch.

Expiry Date: 6 months

## Images



### ELISA

**Image 1.** A typical standard curve