

Datasheet for ABIN570670
anti-TREX2 antibody (Internal Region)[Go to Product page](#)

1 Image

Overview

Quantity:	100 µg
Target:	TREX2 (Trex2)
Binding Specificity:	Internal Region
Reactivity:	Human
Host:	Goat
Clonality:	Polyclonal
Conjugate:	This TREX2 antibody is un-conjugated
Application:	ELISA, Immunohistochemistry (IHC)

Product Details

Purpose:	TREX2
Immunogen:	Peptide with sequence C-HRSSLENPEHDES, from the internal region of the protein sequence according to NP_542432.2.
Sequence:	HRSSLENPEH DES
Isotype:	IgG
Cross-Reactivity:	Human
Purification:	Purified from goat serum by ammonium sulphate precipitation followed by antigen affinity chromatography using the immunizing peptide.
Grade:	Verified

Target Details

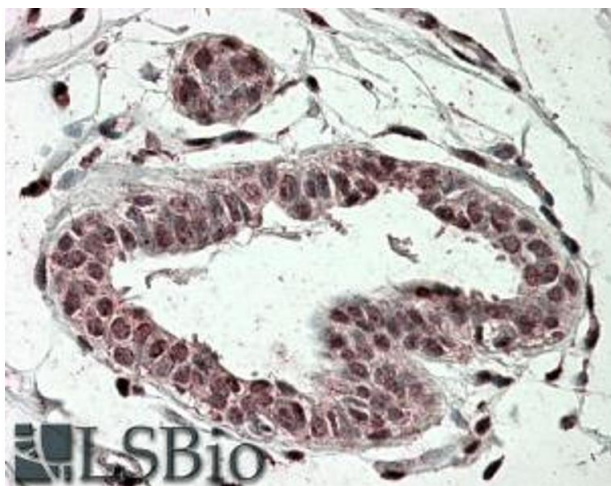
Target:	TREX2 (Trex2)
Alternative Name:	TREX2 (Trex2 Products)
Background:	Three prime repair exonuclease 2, 3'-5' exonuclease
Gene ID:	11219
NCBI Accession:	NP_542432

Application Details

Application Notes:	<p>Immunohistochemistry: In paraffin embedded Human Breast shows nuclear staining in the luminal epithelial duct cells. Recommended concentration, 3-6 µg/mL.</p> <p>Western Blot: Preliminary experiments gave an approx 18 kDa band in lysates of Jurkat, MOLT4 and U937 after 0.5 µg/mL antibody staining. Please note that currently we cannot find an explanation in the literature for the band we observe given the calculate</p> <p>Peptide ELISA: antibody detection limit dilution 1:128000.</p>
Restrictions:	For Research Use only

Handling

Format:	Liquid
Concentration:	0.5 mg/mL
Buffer:	Supplied at 0.5 mg/mL in Tris saline, 0.02 % sodium azide, pH 7.3 with 0.5 % bovine serum albumin.
Preservative:	Sodium azide
Precaution of Use:	This product contains Sodium azide: a POISONOUS AND HAZARDOUS SUBSTANCE which should be handled by trained staff only.
Handling Advice:	Minimize freezing and thawing.
Storage:	-20 °C
Storage Comment:	Aliquot and store at -20°C, with minimal freeze/thawing. A working aliquot may be refrigerated at 4°C for a few weeks and still remain viable.



Immunohistochemistry

Image 1. ABIN570670 (3.8µg/ml) staining of paraffin embedded Human Breast. Steamed antigen retrieval with citrate buffer pH 6, AP-staining.