

Datasheet for ABIN5706755
anti-Histone 3 antibody (H3K18me2)



[Go to Product page](#)

5 Images

Overview

Quantity:	50 µg
Target:	Histone 3 (H3)
Binding Specificity:	H3K18me2
Reactivity:	Human, Mouse, C. elegans
Host:	Rabbit
Clonality:	Polyclonal
Conjugate:	This Histone 3 antibody is un-conjugated
Application:	Western Blotting (WB), Immunohistochemistry (IHC), Immunofluorescence (IF), Chromatin Immunoprecipitation (ChIP), Dot Blot (DB), Multiplex Assay (MA), Fluorescence Microscopy (FM)

Product Details

Purpose:	Histone H3 K18me2 Antibody
Immunogen:	Immunogen: Histone H3 [Dimethyl Lys18] affinity purified antibody was prepared from whole rabbit serum produced by repeated immunizations with a synthetic dimethylated peptide surrounding Lysine 18 of human Histone H3.2. Immunogen Type: Conjugated Peptide
Isotype:	IgG
Cross-Reactivity (Details):	This antibody reacts with human Histone H3.
Characteristics:	Synonyms: rabbit anti-Histone H3 dimethyl Lys18 antibody, H3.3AH3F3H3F3B, H3.3B, H3 histone, family 3A, histone H3.3, MGC87783, MGC87782, H3K18me2

Product Details

Purification:	Anti-Histone H3 [Dimethyl Lys18] was affinity purified from monospecific antiserum by immunoaffinity chromatography.
Sterility:	Sterile filtered

Target Details

Target:	Histone 3 (H3)
Alternative Name:	Histone H3 (H3 Products)
Background:	<p>Background: The di-methylated K18 on histone H3 is a seemingly transient post-translational modification. H3K18 is better known to be acetylated, and occasionally mono-methylated. Suv39h1, a well-studied histone methyltransferase seems to be responsible for the transition of acetylation and methylation at this H3 modification site. The di-methylated K18 on H3 seems to be associated with embryological development and possibly implantation. Anti-Histone H3 are ideal for researchers interested in Chromatin Modifiers, Chromatin Research, Histones and Modified Histones, and Epigenetics research.</p>
Gene ID:	126961
NCBI Accession:	NP_001005464
UniProt:	Q71DI3

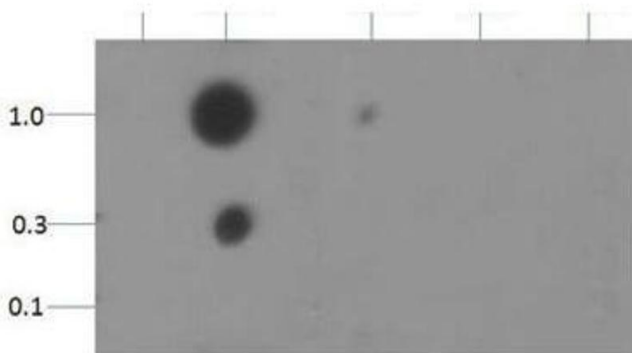
Application Details

Application Notes:	<p>Immunohistochemistry Dilution: 1:50</p> <p>Application Note: Anti-Histone H3 [Dimethyl Lys18] antibody is tested in Western Blot, Chromatin Immunoprecipitation, Dot Blot, and Immunofluorescence. This antibody is useful for Immunocytochemistry. Specific conditions for reactivity should be optimized by the end user. Expect a band approximately ~15.4 kDa corresponding to Histone H3 protein by Western Blotting in HeLa histone prep lysate or the appropriate cell lysate or extract. Epi-Plus™ antibody production in collaboration with Novus Biologicals.</p> <p>ChIP Dilution: 2-5 µg/million cells</p> <p>Western Blot Dilution: 1:500</p> <p>IF Microscopy Dilution: 1:50</p> <p>Other: Dot Blot 1:1000</p>
Restrictions:	For Research Use only

Handling

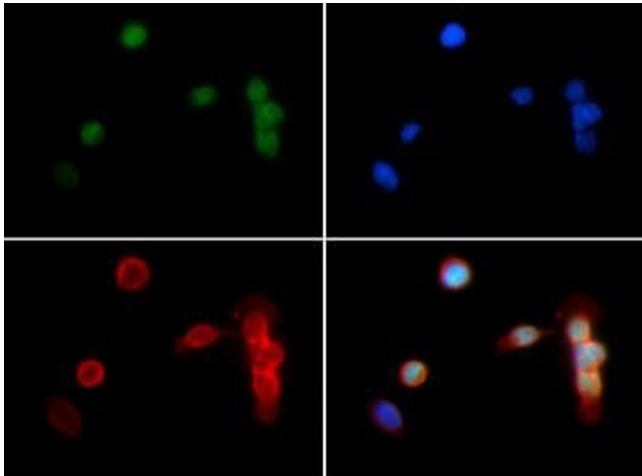
Format:	Liquid
Concentration:	0.79 mg/mL
Buffer:	Buffer: 0.02 M Potassium Phosphate, 0.15 M Sodium Chloride, pH 7.2 Stabilizer: 30 % Glycerol Preservative: 0.01 % (w/v) Sodium Azide
Preservative:	Sodium azide
Precaution of Use:	This product contains Sodium azide: a POISONOUS AND HAZARDOUS SUBSTANCE which should be handled by trained staff only.
Storage:	4 °C,-20 °C
Storage Comment:	Store vial at -20° C prior to opening. Aliquot contents and freeze at -20° C or below for extended storage. Avoid cycles of freezing and thawing. Centrifuge product if not completely clear after standing at room temperature. This product is stable for several weeks at 4° C as an undiluted liquid. Dilute only prior to immediate use.
Expiry Date:	12 months

Images



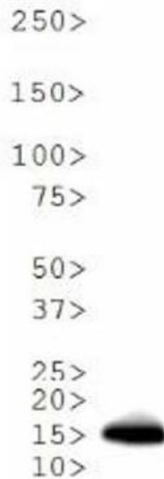
Dot Blot

Image 1. Dot Blot of Rabbit Histone H3 [Dimethyl Lys18] Antibody. Lane 1: K18. Lane 2: K18Me2. Lane 3: K18Me3. Lane 4: K18ac. Lane 5: K18Me1. Load: 0.1, 0.3, and 1 picomoles of peptide. Primary antibody: Histone H3 [Dimethyl Lys18] antibody at 1:1000 for 45 min at 4 °C. Secondary antibody: Dylight™488 rabbit secondary antibody at 1:10,000 for 45 min at RT. Block: 5 % BLOTTO overnight at 4 °C.



Fluorescence Microscopy

Image 2. Immunofluorescence of Rabbit Anti-Histone H3 [Dimethyl Lys18] Antibody. Tissue: HeLa cells. Fixation: 0.5 % PFA. Antigen retrieval: Not required. Primary antibody: Histone H3 [Dimethyl Lys18] antibody at a 1:500 dilution for 1 h at RT. Secondary antibody: Dylight 488 secondary antibody at 1:10,000 for 45 min at RT. Localization: Histone H3 [Dimethyl Lys18] is nuclear and chromosomal. Staining: Histone H3 [Dimethyl Lys18] is expressed in green, nuclei and alpha-tubulin are counterstained with DAPI (blue) and Dylight 594 (red).



Western Blotting

Image 3. Western Blot of Rabbit Anti-Histone H3 [Dimethyl Lys18] Antibody. Lane 1: C. elegans embryo lysate. Load: 30 µg per lane. Primary antibody: Histone H3 [Dimethyl Lys18] at 1:500 for overnight at 4 °C. Secondary antibody: IRDye800™ rabbit secondary antibody at 1:10,000 for 45 min at RT. Block: 5 % BLOTTO overnight at 4 °C. Predicted/Observed size: ~15 kDa. Other band(s): None.

Please check the [product details page](#) for more images. Overall 5 images are available for ABIN5706755.