

Datasheet for ABIN5706764
anti-Histone 3 antibody (H3K36me2)



[Go to Product page](#)

5 Images

Overview

Quantity:	50 µg
Target:	Histone 3 (H3)
Binding Specificity:	H3K36me2
Reactivity:	Human, Mouse, C. elegans
Host:	Rabbit
Clonality:	Polyclonal
Conjugate:	This Histone 3 antibody is un-conjugated
Application:	Western Blotting (WB), Immunohistochemistry (IHC), Immunofluorescence (IF), Chromatin Immunoprecipitation (ChIP), Dot Blot (DB), Fluorescence Microscopy (FM)

Product Details

Purpose:	Histone H3 K36me2 Antibody
Immunogen:	Immunogen: Histone H3 [Dimethyl Lys36] affinity purified antibody was prepared from whole rabbit serum produced by repeated immunizations with a synthetic dimethylated peptide surrounding Lysine 36 of human Histone H3.2. Immunogen Type: Conjugated Peptide
Isotype:	IgG
Cross-Reactivity (Details):	This antibody reacts with human Histone H3.
Characteristics:	Synonyms: rabbit anti-Histone H3 dimethyl Lys36 antibody, H3.3B, H3.3AH3F3H3F3B, H3 histone, family 3A, histone H3.3, MGC87783, MGC87782, H3K36me2
Purification:	Anti-Histone H3 [Dimethyl Lys36] was affinity purified from monospecific antiserum by

Product Details

immunoaffinity chromatography.

Sterility: Sterile filtered

Target Details

Target: Histone 3 (H3)

Alternative Name: Histone H3 ([H3 Products](#))

Background: Background: In normal cellular conditions, H3K36Me2 represses spurious transcription, via recruitment of a deacetylase complex, Rpd3s. However, in cancer cells, overexpression of a histone demethylation enzyme (KDM8) can lead to demethylation of H3K36Me2, which then leads to inhibition of HDAC recruitment and thus erroneous transcriptional activation. Therefore, the variable role of H3K36Me2 as an epigenetic repressor or activator seems critical in cancer research. Anti-Histone H3 are ideal for researchers interested in Chromatin Modifiers, Chromatin Research, Histones and Modified Histones, and Epigenetics research.

Gene ID: 126961

NCBI Accession: [NP_001005464](#)

UniProt: [Q71DI3](#)

Application Details

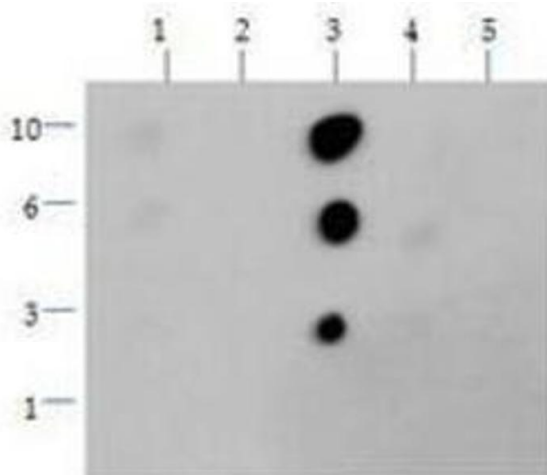
Application Notes: Immunohistochemistry Dilution: 1:500
Application Note: Anti-Histone H3 [Dimethyl Lys36] antibody is tested in Western Blot, Chromatin Immunoprecipitation, Dot Blot, and Immunofluorescence. This antibody is useful for Immunocytochemistry. Specific conditions for reactivity should be optimized by the end user. Expect a band approximately ~15.4 kDa corresponding to Histone H3 protein by Western Blotting in HeLa histone prep lysate or the appropriate cell lysate or extract. Epi-Plus™ antibody production in collaboration with Novus Biologicals.
ChIP Dilution: 2-5 µg/million cells
Western Blot Dilution: 1:500
IF Microscopy Dilution: 1:500
Other: Dot Blot 1:1000

Restrictions: For Research Use only

Handling

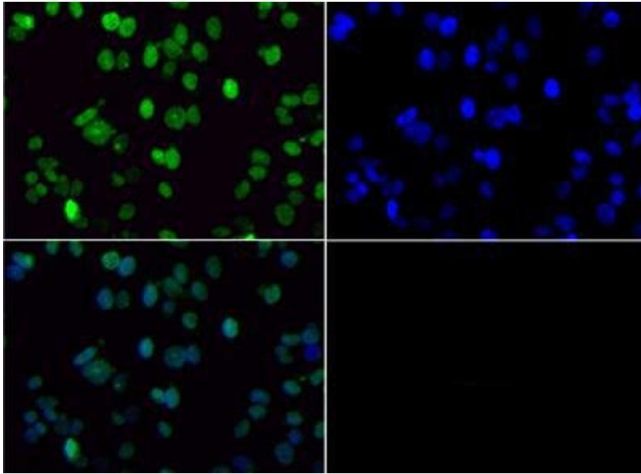
Format:	Liquid
Concentration:	0.73 mg/mL
Buffer:	Buffer: 0.02 M Potassium Phosphate, 0.15 M Sodium Chloride, pH 7.2 Stabilizer: 30 % Glycerol Preservative: 0.01 % (w/v) Sodium Azide
Preservative:	Sodium azide
Precaution of Use:	This product contains Sodium azide: a POISONOUS AND HAZARDOUS SUBSTANCE which should be handled by trained staff only.
Storage:	4 °C,-20 °C
Storage Comment:	Store vial at -20° C prior to opening. Aliquot contents and freeze at -20° C or below for extended storage. Avoid cycles of freezing and thawing. Centrifuge product if not completely clear after standing at room temperature. This product is stable for several weeks at 4° C as an undiluted liquid. Dilute only prior to immediate use.
Expiry Date:	12 months

Images



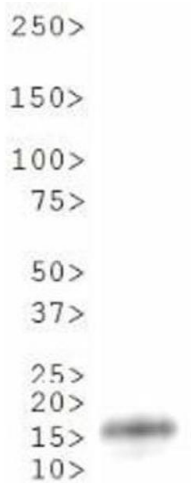
Dot Blot

Image 1. Dot Blot of Rabbit Histone H3 [Dimethyl Lys36] Antibody. Lane 1: K36. Lane 2: K36Me1. Lane 3: K36Me2. Lane 4: K36Me3. Lane 5: K36Ac. Load: 1, 3, 6, and 10 picomoles of peptide. Primary antibody: Histone H3 [Dimethyl Lys36] antibody at 1:1000 for 45 min at 4 °C. Secondary antibody: Dylight™488 rabbit secondary antibody at 1:10,000 for 45 min at RT. Block: 5 % BLOTTO overnight at 4 °C.



Fluorescence Microscopy

Image 2. Immunofluorescence of Rabbit Anti-Histone H3 [Dimethyl Lys36] Antibody. Tissue: Neuro2a cells. Fixation: 0.5 % PFA. Antigen retrieval: Not required. Primary antibody: Histone H3 [Dimethyl Lys36] antibody at a 1:100 dilution for 1 h at RT. Secondary antibody: FITC secondary antibody at 1:10,000 for 45 min at RT. Localization: Histone H3 [Dimethyl Lys36] is nuclear and chromosomal. Staining: Histone H3 [Dimethyl Lys36] is expressed in green, nuclei are counterstained with DAPI (blue).



Western Blotting

Image 3. Western Blot of Rabbit Anti-Histone H3 [Dimethyl Lys36] Antibody. Lane 1: C. elegans embryo lysate. Load: 30 µg per lane. Primary antibody: Histone H3 [Dimethyl Lys36] at 1:500 for overnight at 4 °C. Secondary antibody: IRDye800™ rabbit secondary antibody at 1:10,000 for 45 min at RT. Block: 5 % BLOTTO overnight at 4 °C. Predicted/Observed size: ~15 kDa. Other band(s): None.

Please check the [product details page](#) for more images. Overall 5 images are available for ABIN5706764.