

Datasheet for ABIN5706816
anti-Fluorescein antibody



[Go to Product page](#)

2 Images

2 Publications

Overview

Quantity:	1 mg
Target:	Fluorescein
Reactivity:	Please inquire
Host:	Mouse
Clonality:	Monoclonal
Conjugate:	Un-conjugated
Application:	Western Blotting (WB), ELISA, Immunohistochemistry (IHC), Flow Cytometry (FACS), Immunofluorescence (IF)

Product Details

Purpose:	Fluorescein (FITC) Monoclonal Antibody
Immunogen:	Immunogen: Fluorescein conjugated to Mouse IgG Immunogen Type: Other
Clone:	8B9-C6-D3
Isotype:	IgG2a kappa
Cross-Reactivity (Details):	Assay by immunoelectrophoresis resulted in a single precipitin arc against anti-mouse serum, Fluorescein conjugated IgG and Fluorescein conjugated Bovine Serum Albumin.
Characteristics:	Synonyms: mouse Anti-FITC antibody, mouse anti-fluorescein antibody
Purification:	Fluorescein Antibody was prepared from mouse ascites by Protein A chromatography.
Sterility:	Sterile filtered

Target Details

Target:	Fluorescein
Target Type:	Chemical
Background:	Background: Anti-Fluorescein is designed for immunofluorescence microscopy, in situ hybridization, fluorescence based plate assays (FLISA) and fluorescent western blotting. This product is also suitable for multiplex analysis, including multicolor imaging, utilizing various commercial platforms.

Application Details

Application Notes:	Flow Cytometry Dilution: 1-2 µg/mL Immunohistochemistry Dilution: 1:250 - 1:1,500 Application Note: Anti-Fluorescein Antibody has been tested by ELISA, western blot, and immunofluorescence. This product is suitable for immunomicroscopy, in situ hybridization and flow cytometry or FACS analysis as well as other antibody based fluorescent assays requiring lot-to-lot consistency. Western Blot Dilution: 1:500 - 1:3,000 ELISA Dilution: 1:5,000 - 1:30,000 Other: in situ hybridization
Restrictions:	For Research Use only

Handling

Format:	Liquid
Concentration:	1.0 mg/mL
Buffer:	Buffer: 0.02 M Potassium Phosphate, 0.15 M Sodium Chloride, pH 7.2 Stabilizer: None Preservative: 0.01 % (w/v) Sodium Azide
Preservative:	Sodium azide
Precaution of Use:	This product contains Sodium azide: a POISONOUS AND HAZARDOUS SUBSTANCE which should be handled by trained staff only.
Storage:	4 °C, -20 °C
Storage Comment:	Store vial at -20° C prior to opening. Aliquot contents and freeze at -20° C or below for extended storage. Avoid cycles of freezing and thawing. Centrifuge product if not completely clear after standing at room temperature. This product is stable for several weeks at 4° C as an undiluted

Handling

liquid. Dilute only prior to immediate use.

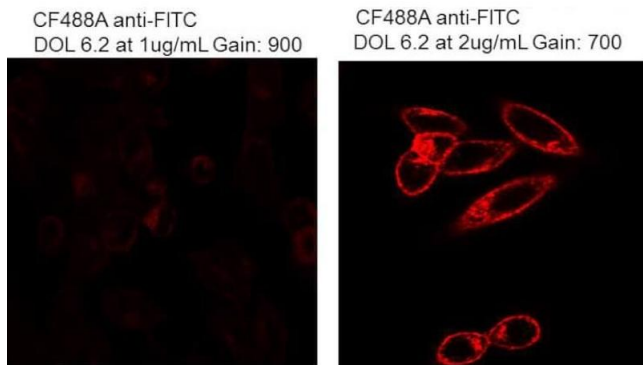
Expiry Date: 12 months

Publications

Product cited in: Kotani, Yamaguchi, Ohnishi, Kuwahara, Nakano, Nakano, Ida, Murakoshi, Honke: "Proximity proteomics identifies cancer cell membrane cis-molecular complex as a potential cancer target." in: **Cancer science**, Vol. 110, Issue 8, pp. 2607-2619, (2019) ([PubMed](#)).

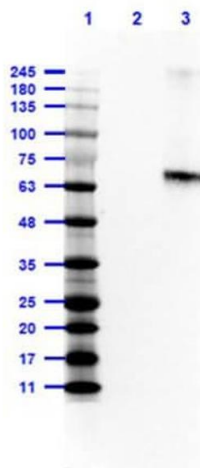
Miyagawa-Yamaguchi, Kotani, Honke: "Expressed glycosylphosphatidylinositol-anchored horseradish peroxidase identifies co-clustering molecules in individual lipid raft domains." in: **PLoS ONE**, Vol. 9, Issue 3, pp. e93054, (2015) ([PubMed](#)).

Images



Fluorescence Microscopy

Image 1. Immunofluorescence Microscopy of Mouse Anti-Fluorescein antibody. Tissue: HeLa cells. Fixation: 0.5 % PFA. Antigen retrieval: not required. Primary antibody: FITC anti-transferrin receptor antibody. Secondary antibody: CF™640R anti-fluorescein secondary antibody at 1 µg/mL (left) and 2 µg (right) for 45 min at RT. Localization/Staining: plasma membrane and endosome.



Western Blotting

Image 2. Western Blot of Mouse Anti-Fluorescein Antibody. Lane 1: Opal Prestained Molecular Weight Marker (p/n MB-210-0500). Lane 2: Bovine Albumin (BSA) (p/n 001-0133) [0.01 µg]. Lane 3: Bovine Albumin-Fluorescein (BSA-FITC) (p/n 001-0233) [0.01 µg]. Primary Antibody: Ms-anti-Fluorescein 1.0 µg/mL overnight at 2-8 °C. Secondary Antibody: Rabbit Anti-Mouse HRP (p/n 610-403-C46) at 1:40,000 for 30 mins at RT. Block: 5 % BLOTTO in 1X PBS for 1hr at RT. Predicted MW: ~60 kDa. Observed MW:

~65 kDa. Exposure: 0.5sec.