

Datasheet for ABIN5706835 **anti-ABI1 antibody (C-Term)**

3 Images



[Go to Product page](#)

Overview

Quantity:	100 µg
Target:	ABI1
Binding Specificity:	C-Term
Reactivity:	Human, Rat, Mouse
Host:	Rabbit
Clonality:	Polyclonal
Conjugate:	This ABI1 antibody is un-conjugated
Application:	Western Blotting (WB), ELISA

Product Details

Purpose:	Abi1 Antibody
Immunogen:	<p>Immunogen: This affinity purified antibody was prepared from whole rabbit serum produced by repeated immunizations with a synthetic peptide corresponding to near c-terminal of the mouse Abi-1 protein.</p> <p>Immunogen Type: Conjugated Peptide</p>
Isotype:	IgG
Cross-Reactivity (Details):	Anti-Abi1 is directed against mouse Abi1.
Characteristics:	<p>Synonyms: rabbit anti-Abi1 Antibody, Abi 1, Abi-1, Abl Interactor 1, Eps8 SH3 Domain-Binding Protein, Abl-Binding Protein, Abelson Interactor 1, E3B1, Spectrin SH3 Domain Binding Protein 1, Nap1-binding protein, SSH3BP1</p>
Purification:	This product is an affinity purified antibody produced by immunoaffinity chromatography using

Product Details

peptide coupled to agarose beads.

Sterility: Sterile filtered

Target Details

Target: ABI1

Alternative Name: Abi1 ([ABI1 Products](#))

Background: Background: Anti-Abi1 Antibody was designed, produced, and validated as part of the Joy Cappel Young Investigator Award (JCYIA). Abi1 gene has been suggested to have a role in inhibiting cell growth and encodes an adaptor protein in the Abelson-interactor family. The protein is involved in signal transduction, actin regulation and cytoskeletal remodeling. Studies suggest that Abi1 is a member of the WAVE complex and a dysfunctional complex may allow for the progression of prostate cancer. Anti-Abi1 is ideal for researchers interested in melanoma, colon and breast cancer and other cancer antibody research.

Gene ID: 11308

NCBI Accession: [NP_001070658](#)

UniProt: [Q8CBW3](#)

Pathways: [RTK Signaling](#), [Response to Water Deprivation](#), [ER-Nucleus Signaling](#)

Application Details

Application Notes: Application Note: This affinity purified antibody has been tested for use in ELISA and western blot. Specific conditions for reactivity should be optimized by the end user. Expect a band ~ 65 kDa in size corresponding to Abi1 by western blotting in the appropriate cell lysate or extract.
Western Blot Dilution: 1.0 µg/mL
ELISA Dilution: 5.0 µg/mL

Restrictions: For Research Use only

Handling

Format: Liquid

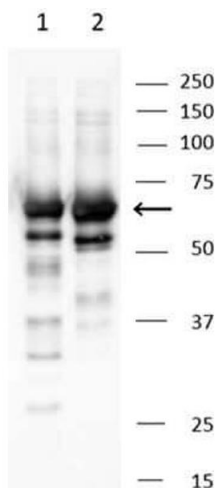
Concentration: 1.0 mg/mL

Buffer: Buffer: 0.02 M Potassium Phosphate, 0.15 M Sodium Chloride, pH 7.2
Stabilizer: None

Handling

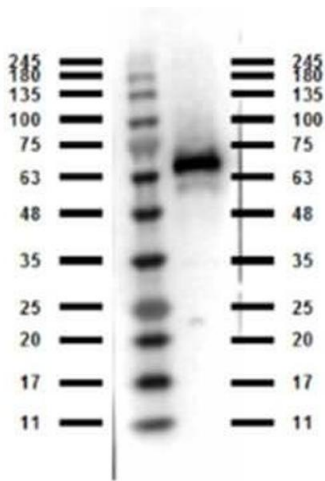
	Preservative: 0.01 % (w/v) Sodium Azide
Preservative:	Sodium azide
Precaution of Use:	This product contains Sodium azide: a POISONOUS AND HAZARDOUS SUBSTANCE which should be handled by trained staff only.
Storage:	4 °C,-20 °C
Storage Comment:	Store vial at -20° C prior to opening. Aliquot contents and freeze at -20° C or below for extended storage. Avoid cycles of freezing and thawing. Centrifuge product if not completely clear after standing at room temperature. This product is stable for several weeks at 4° C as an undiluted liquid. Dilute only prior to immediate use.
Expiry Date:	12 months

Images



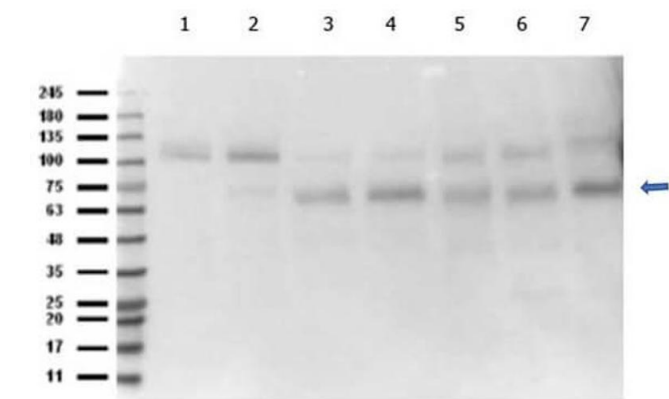
Western Blotting

Image 1. Western Blot of Rabbit anti-Abi1 antibody. Marker: BioRad Precision Plus Dual Color Standard. Lane 1: Purified recombinant His-tagged Abi1 Isoform 2. Lane 2: Purified recombinant His-tagged Abi1 Isoform 3. Load: 2 µL per lane. Primary antibody: Abi1 antibody at 1:1,000 for 2hrs at RT. Secondary antibody: HRP conjugated goat-α-rabbit at 1:10,000 for 60 min at RT. Blocking Buffer: 5 % non-fat milk in TBS-t overnight at 4 °C. Predicted/Observed size: 65 kDa for Abi1.



Western Blotting

Image 2. Western Blot of Rabbit anti-Abi1 antibody. Marker: Opal Pre-stained ladder (p/n MB-210-0500). Lane 1: Abi1 recombinant protein. Load: 50 ng per lane. Primary antibody: Abi1 antibody at 1:1,000 for o/n at 4 °C. Secondary antibody: Peroxidase rabbit secondary antibody (p/n 611-103-122) at 1:70,000 for 30 min at RT. Blocking Buffer: (p/n MB-070) for 30 min at RT. Predicted/Observed size: 65 kDa for Abi1.



Western Blotting

Image 3. Western Blot of Rabbit anti-Abi1 antibody. Marker: Opal Pre-stained ladder (p/n MB-210-0500). Lane 1: MEF3 KO. Lane 2: MEF3 WT. Lane 3: Mouse brain (p/n W10-000-T004). Lane 4: Rat brain (p/n W12-000-T077). Lane 5: HCT-116 WCL (p/n W09-001-GM4). Lane 6: HeLa WCL (p/n W09-000-364). Lane 7: NIH/3T3 WCL (p/n W10-000-358). Load: 35 µg per lane. Primary antibody: Abi1 antibody at 1:1,000 for o/n at 4 °C. Secondary antibody: Peroxidase rabbit secondary antibody (p/n 611-103-122) at 1:70,000 for 30 min at RT. Blocking Buffer: (p/n MB-070) for 30 min at RT. Predicted/Observed size: 65 kDa for Abi1.