

Datasheet for ABIN5706883

anti-Histone 3 antibody (pThr6)



[Go to Product page](#)

4 Images

Overview

Quantity:	50 µg
Target:	Histone 3 (H3)
Binding Specificity:	pThr6
Reactivity:	Human, C. elegans
Host:	Rabbit
Clonality:	Polyclonal
Conjugate:	This Histone 3 antibody is un-conjugated
Application:	Western Blotting (WB), Immunohistochemistry (IHC), Immunofluorescence (IF), Chromatin Immunoprecipitation (ChIP), Dot Blot (DB), Fluorescence Microscopy (FM)

Product Details

Purpose:	Histone H3 phospho T6 Antibody
Immunogen:	Immunogen: Histone H3 [p Thr6] affinity purified antibody was prepared from whole rabbit serum produced by repeated immunizations with a synthetic peptide surrounding Threonine 6 of human Histone H3.2. Immunogen Type: Conjugated Peptide
Isotype:	IgG
Cross-Reactivity (Details):	This antibody reacts with human Histone H3.
Characteristics:	Synonyms: rabbit anti-Histone H3 pT6 antibody, H3.3AH3F3H3F3B, H3.3B, H3 histone, family 3A, histone H3.3, MGC87783, MGC87782, H3pT6
Purification:	Anti-Histone H3 [p Thr6] was affinity purified from monospecific antiserum by immunoaffinity

Product Details

	chromatography.
Sterility:	Sterile filtered

Target Details

Target:	Histone 3 (H3)
Alternative Name:	Histone H3 (H3 Products)
Background:	Background: Phosphorylation as a post-translational modification on histone H3 modulates the ability of proteins to recognize and bind to the H3 tail. When additional modifications to H3 are present, in addition to the native T6 phosphorylation, there is an amplified effect. Several authors suggest that the complexity of these combined PTMs on histone tails should be described as a convoluted language, rather than as a strict code. Since the H3T6 phosphorylation seems to be constitutively present, its de-phosphorylation could be highly significant and affect transcription, repair and replication. Anti-Histone H3 are ideal for researchers interested in Chromatin Modifiers, Chromatin Research, Histones and Modified Histones, and Epigenetics research.
Gene ID:	126961
NCBI Accession:	NP_001005464
UniProt:	Q71DI3

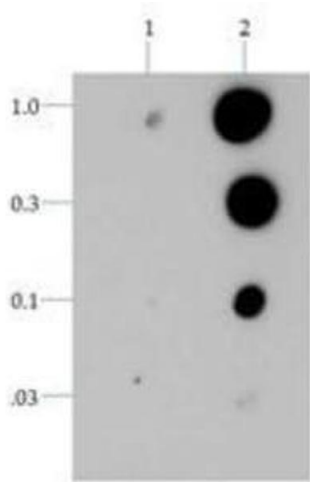
Application Details

Application Notes:	Immunohistochemistry Dilution: 1:200 Application Note: Anti-Histone H3 [p Thr6] antibody is tested for Western Blot, Immunofluorescence, and Dot Blot. This antibody is useful in Chromatin Immunoprecipitation and Immunocytochemistry. Specific conditions for reactivity should be optimized by the end user. Expect a band approximately ~15.4 kDa corresponding to Histone H3 protein by Western Blotting in HeLa histone prep lysate or the appropriate cell lysate or extract. Epi-Plus™ antibody production in collaboration with Novus Biologicals. ChIP Dilution: 2-5 µg/million cells Western Blot Dilution: 1:500 IF Microscopy Dilution: 1:200 Other: Dot Blot user optimized
Restrictions:	For Research Use only

Handling

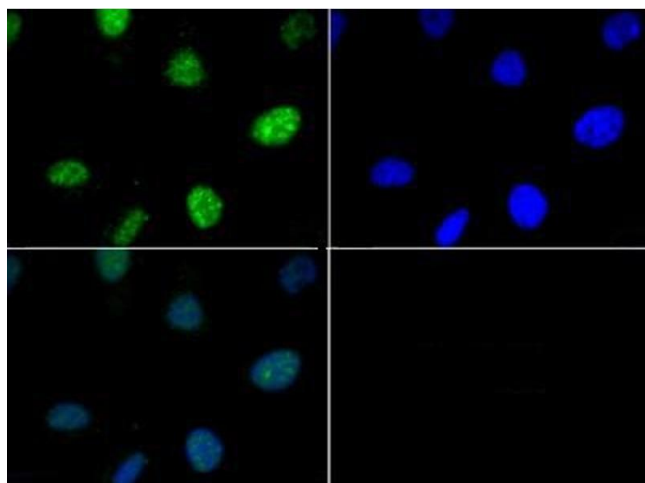
Format:	Liquid
Concentration:	0.67 mg/mL
Buffer:	Buffer: 0.02 M Potassium Phosphate, 0.15 M Sodium Chloride, pH 7.2 Stabilizer: 30 % Glycerol Preservative: 0.01 % (w/v) Sodium Azide
Preservative:	Sodium azide
Precaution of Use:	This product contains Sodium azide: a POISONOUS AND HAZARDOUS SUBSTANCE which should be handled by trained staff only.
Storage:	4 °C,-20 °C
Storage Comment:	Store vial at -20° C prior to opening. Aliquot contents and freeze at -20° C or below for extended storage. Avoid cycles of freezing and thawing. Centrifuge product if not completely clear after standing at room temperature. This product is stable for several weeks at 4° C as an undiluted liquid. Dilute only prior to immediate use.
Expiry Date:	12 months

Images



Dot Blot

Image 1. Dot Blot of Rabbit Histone H3 [p Thr6] Antibody. Lane 1: T6. Lane 2: pT6. Load: 1, 0.3, 0.1, 0.03 picomoles of peptide. Primary antibody: Histone H3 [p Thr6] antibody at 1:1000 for 45 min at 4 °C. Secondary antibody: Dylight™488 rabbit secondary antibody at 1:10,000 for 45 min at RT. Block: 5 % BLOTTO overnight at 4 °C.



Fluorescence Microscopy

Image 2. Immunofluorescence of Rabbit Anti-Histone H3 [p Thr6] Antibody. Tissue: HeLa cells. Fixation: 0.5 % PFA. Antigen retrieval: Not required. Primary antibody: Histone H3 [p Thr6] antibody at a 1:50 dilution for 1 h at RT. Secondary antibody: FITC secondary antibody at 1:10,000 for 45 min at RT. Localization: Histone H3 [p Thr6] is nuclear and chromosomal. Staining: Histone H3 [p Thr6] is expressed in green and the nuclei are counterstained with DAPI (blue).



Western Blotting

Image 3. Western Blot of Rabbit Anti-Histone H3 [p Thr6] Antibody. Lane 1: C. elegans embryo lysate. Load: 30 µg per lane. Primary antibody: Histone H3 [p Thr6] at 1:500 for overnight at 4 °C. Secondary antibody: IRDye800™ rabbit secondary antibody at 1:10,000 for 45 min at RT. Block: 5 % BLOTTO overnight at 4 °C. Predicted/Observed size: ~15 kDa. Other band(s): None.

Please check the [product details page](#) for more images. Overall 4 images are available for ABIN5706883.