



[Go to Product page](#)

Datasheet for ABIN570690

## anti-KIF6 antibody (Internal Region)

### 2 Images

#### Overview

Quantity:	100 µg
Target:	KIF6
Binding Specificity:	Internal Region
Reactivity:	Human
Host:	Goat
Clonality:	Polyclonal
Conjugate:	This KIF6 antibody is un-conjugated
Application:	ELISA, Immunohistochemistry (IHC)

#### Product Details

Purpose:	KIF6
Immunogen:	Peptide with sequence C-DPDQNIHLKNTLH, from the internal region of the protein sequence according to NP_659464.3.
Sequence:	DPDQNIHLKN LTLH
Isotype:	IgG
Cross-Reactivity:	Human, Mouse
Purification:	Purified from goat serum by ammonium sulphate precipitation followed by antigen affinity chromatography using the immunizing peptide.
Grade:	Verified

## Target Details

---

Target:	KIF6
Alternative Name:	KIF6 ( <a href="#">KIF6 Products</a> )
Background:	KIF6, kinesin family member 6, C6orf102, DKFZp451I2418, MGC33317, dJ1043E3.1, dJ137F1.4, dJ188D3.1, OTTHUMP00000016349, OTTHUMP00000039712
Gene ID:	221458, 319991
NCBI Accession:	<a href="#">NP_659464</a>

## Application Details

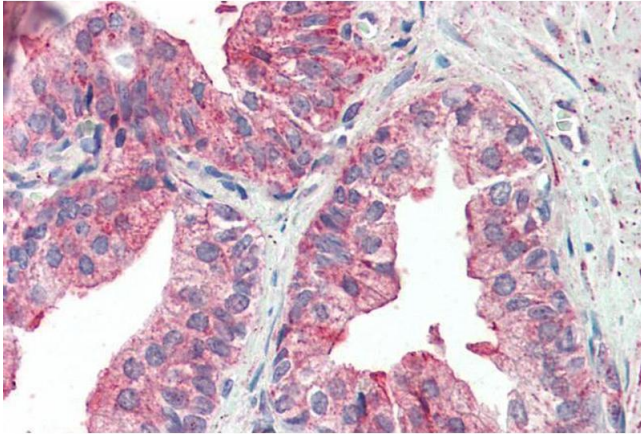
---

Application Notes:	<p>Immunohistochemistry: Paraffin embedded Human Prostate and Kidney. Recommended concentration: 5 µg/mL.</p> <p>Western Blot: Preliminary experiments gave an approx. 140 kDa band in Human Heart lysates after 0.5 µg/mL antibody staining. Please note that currently we cannot find an explanation in the literature for the band we observe given the calculated size of 92.</p> <p>Peptide ELISA: antibody detection limit dilution 1:32000.</p>
Restrictions:	For Research Use only

## Handling

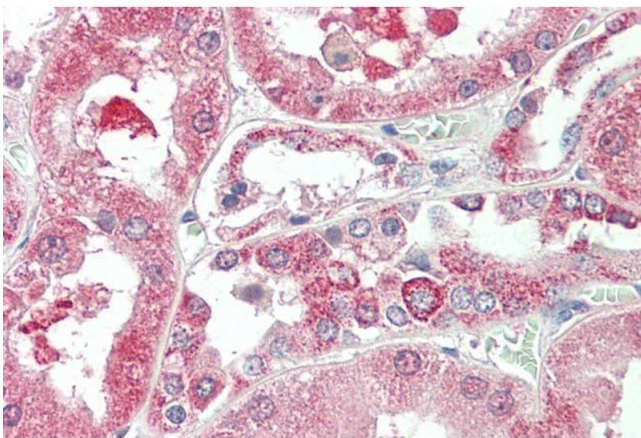
---

Format:	Liquid
Concentration:	0.5 mg/mL
Buffer:	Supplied at 0.5 mg/mL in Tris saline, 0.02 % sodium azide, pH 7.3 with 0.5 % bovine serum albumin.
Preservative:	Sodium azide
Precaution of Use:	This product contains Sodium azide: a POISONOUS AND HAZARDOUS SUBSTANCE which should be handled by trained staff only.
Handling Advice:	Minimize freezing and thawing.
Storage:	-20 °C
Storage Comment:	Aliquot and store at -20°C, with minimal freeze/thawing. A working aliquot may be refrigerated at 4°C for a few weeks and still remain viable.



#### Immunohistochemistry

**Image 1.** ABIN570690 (5µg/ml) staining of paraffin embedded Human Prostate. Steamed antigen retrieval with citrate buffer pH 6, AP-staining.



#### Immunohistochemistry

**Image 2.** ABIN570690 (5µg/ml) staining of paraffin embedded Human Kidney. Steamed antigen retrieval with citrate buffer pH 6, AP-staining.