

Datasheet for ABIN570693  
**anti-COG8 antibody (Internal Region)**[Go to Product page](#)

## 1 Image

## Overview

Quantity:	100 µg
Target:	COG8
Binding Specificity:	Internal Region
Reactivity:	Human
Host:	Goat
Clonality:	Polyclonal
Conjugate:	This COG8 antibody is un-conjugated
Application:	ELISA, Immunohistochemistry (IHC)

## Product Details

Purpose:	COG8
Immunogen:	Peptide with sequence C-KAIQETVEKFQEE, from the internal region of the protein sequence according to NP_115758.3.
Sequence:	KAIQETVEKF QEE
Isotype:	IgG
Cross-Reactivity:	Human
Purification:	Purified from goat serum by ammonium sulphate precipitation followed by antigen affinity chromatography using the immunizing peptide.
Grade:	Verified

## Target Details

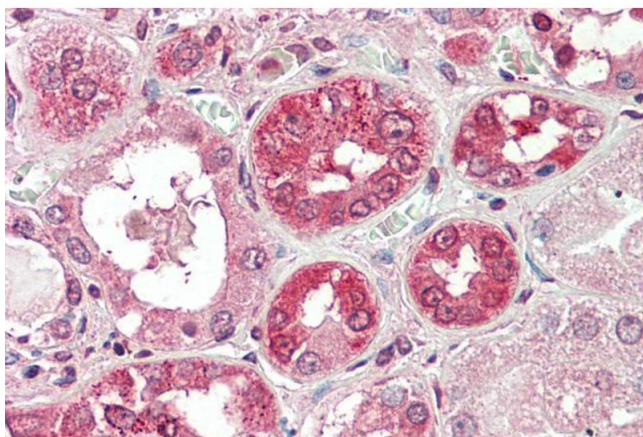
Target:	COG8
Alternative Name:	COG8 ( <a href="#">COG8 Products</a> )
Background:	COG8, component of oligomeric golgi complex 8, DOR1, FLJ22315, conserved oligomeric golgi complex component 8, dependent on RIC1
Gene ID:	84342
NCBI Accession:	<a href="#">NP_115758</a>

## Application Details

Application Notes:	<p>Immunohistochemistry: Paraffin embedded Human Kidney. Recommended concentration: 5 µg/mL.</p> <p>Western Blot: Preliminary experiments gave bands at approx. 25 kDa and 45 kDa in Human Brain (Cerebellum) lysates after 1 µg/mL antibody staining. Please note that currently we cannot find an explanation in the literature for the bands we observe given the</p> <p>Peptide ELISA: antibody detection limit dilution 1:16000.</p>
Restrictions:	For Research Use only

## Handling

Format:	Liquid
Concentration:	0.5 mg/mL
Buffer:	Supplied at 0.5 mg/mL in Tris saline, 0.02 % sodium azide, pH 7.3 with 0.5 % bovine serum albumin.
Preservative:	Sodium azide
Precaution of Use:	This product contains Sodium azide: a POISONOUS AND HAZARDOUS SUBSTANCE which should be handled by trained staff only.
Handling Advice:	Minimize freezing and thawing.
Storage:	-20 °C
Storage Comment:	Aliquot and store at -20°C, with minimal freeze/thawing. A working aliquot may be refrigerated at 4°C for a few weeks and still remain viable.



#### Immunohistochemistry

**Image 1.** ABIN570693 (5µg/ml) staining of paraffin embedded Human Kidney. Steamed antigen retrieval with citrate buffer pH 6, AP-staining.