

Datasheet for ABIN5706966

Goat IgG isotype control (Texas Red (TR))[Go to Product page](#)**1** Image

Overview

Quantity:	100 tests
Target:	IgG
Host:	Goat
Clonality:	Polyclonal
Conjugate:	Texas Red (TR)
Application:	ELISA, Flow Cytometry (FACS), FLISA

Product Details

Isotype:	IgG
Characteristics:	Goat IgG-TXRD

Target Details

Target:	IgG
Abstract:	IgG Products
Target Type:	Antibody

Application Details

Application Notes:	<ul style="list-style-type: none">• Applications: Quality tested applications include - FC , ELISA FLISA• Other referenced applications include - IHC-FS , IHC-PS , IHC-WM , ICC , IP , Block , In vitro control , In vivo control• Working Dilutions: Flow Cytometry BIOT conjugate 1 g/106 cells FITC, PE, APC, SPRD, CY5,
--------------------	--

Application Details

and PE/CY5.5 conjugates 10 L/106 cells For flow cytometry, the suggested use of these reagents is in a final volume of 100 L FLISA TRITC and TXRD conjugates 1:100 - 1:400

Restrictions: For Research Use only

Handling

Buffer: 100 tests in 1.0 mL of PBS/Sodium azide and a stabilizing agent

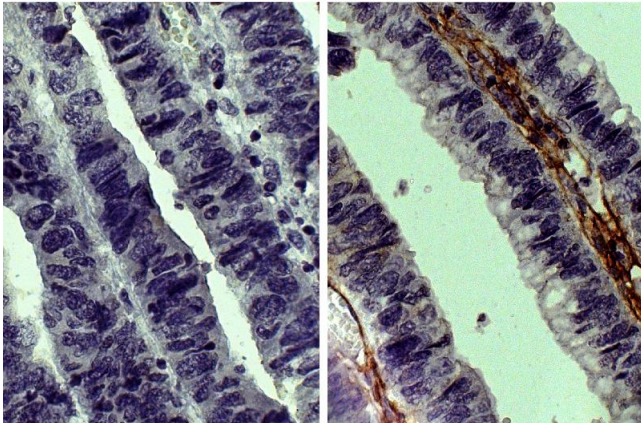
Preservative: Sodium azide

Precaution of Use: This product contains Sodium azide: a POISONOUS AND HAZARDOUS SUBSTANCE which should be handled by trained staff only.

Storage: 4 °C,-20 °C

Storage Comment: Store at 2-8°C

Images



Immunohistochemistry

Image 1. Paraffin embedded human gastric cancer tissue was stained with Goat IgG-UNLB isotype control, DAB, and hematoxylin.