

Datasheet for ABIN5707019

## anti-Collagen Type I antibody (FITC)



[Go to Product page](#)

### 1 Image

#### Overview

Quantity:	0.2 mg
Target:	Collagen Type I (COL1)
Reactivity:	Human
Host:	Goat
Clonality:	Polyclonal
Conjugate:	This Collagen Type I antibody is conjugated to FITC
Application:	ELISA, FLISA

#### Product Details

Isotype:	IgG
Specificity:	Reacts with conformational determinants on type I collagen Referenced species reactivities include - Human 1-5,10,20,26,27,29,31-34 Chicken 17 Hamster 11,18 Mouse 24,27,28 Chinchilla 19 Porcine 5,21 Rat 5,13-15,23,25,27,35 Elephant 8 Rabbit 16,30 Bovine 6,20 Feline 9 Sheep 7 Canine 5,12 Guinea Pig 16 Tree Shrew 22
Characteristics:	Goat Anti-Type I Collagen-FITC
Purification:	<b>Purification Method:</b> Affinity chromatography on type I collagen covalently linked to agarose.

#### Target Details

Target:	Collagen Type I (COL1)
Alternative Name:	Type I Collagen ( <a href="#">COL1 Products</a> )

## Application Details

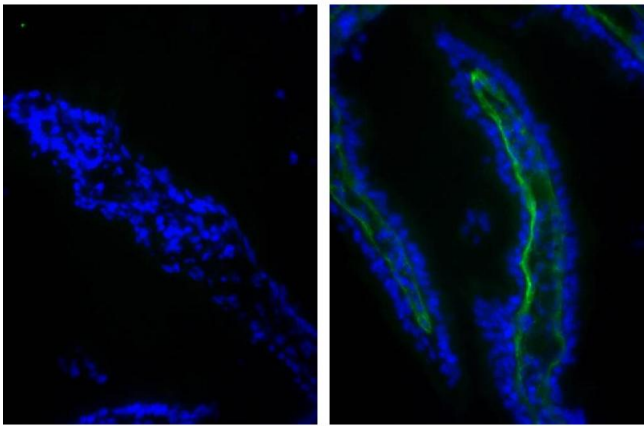
Application Notes:	<ul style="list-style-type: none"><li>• <b>Applications:</b> Quality tested applications include - ELISA , FLISA</li><li>• Other referenced applications include - IHC-PS , IHC-FS , ICC , EM , FC , WB , IP</li><li>• <b>Working Dilutions:</b> ELISA BIOT conjugate 1:1,000 - 1:4,000 FLISA FITC and AF488 conjugates 1:200 - 1:400</li></ul>
--------------------	---

Restrictions:	For Research Use only
---------------	-----------------------

## Handling

Concentration:	0.4 mg/mL
Buffer:	0.2 mg in 0.5 mL of PBS/Sodium azide
Preservative:	Sodium azide
Precaution of Use:	This product contains Sodium azide: a POISONOUS AND HAZARDOUS SUBSTANCE which should be handled by trained staff only.
Storage:	4 °C
Storage Comment:	Store at 2-8°C

## Images



### Immunofluorescence

**Image 1.** Frozen chicken intestinal tissue section was stained with Goat IgG-FITC isotype control followed by DAPI.