

Datasheet for ABIN570703

anti-RCBTB2 antibody (Internal Region)**2** Images[Go to Product page](#)

Overview

| | |
|----------------------|---------------------------------------|
| Quantity: | 100 µg |
| Target: | RCBTB2 |
| Binding Specificity: | Internal Region |
| Reactivity: | Human |
| Host: | Goat |
| Clonality: | Polyclonal |
| Conjugate: | This RCBTB2 antibody is un-conjugated |
| Application: | ELISA, Immunohistochemistry (IHC) |

Product Details

| | |
|-------------------|---|
| Purpose: | RCBTB2 |
| Immunogen: | Peptide with sequence CEHFRSSLEDNEDD, from the internal region of the protein sequence according to NP_001259.1. |
| Sequence: | CEHFRSSLED NEDD |
| Isotype: | IgG |
| Specificity: | This antibody is not expected to cross-react with RCBTB1. |
| Cross-Reactivity: | Cow, Human, Mouse, Pig, Rat |
| Purification: | Purified from goat serum by ammonium sulphate precipitation followed by antigen affinity chromatography using the immunizing peptide. |
| Grade: | Verified |

Target Details

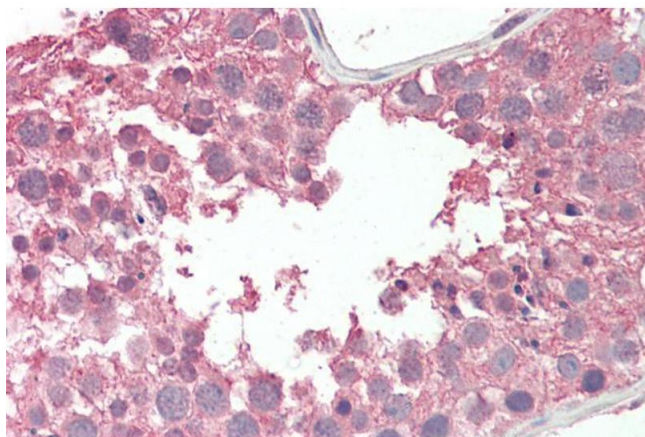
| | |
|-------------------|---|
| Target: | RCBTB2 |
| Alternative Name: | RCBTB2 (RCBTB2 Products) |
| Background: | RCBTB2, regulator of chromosome condensation (RCC1) and BTB (POZ) domain containing protein 2, CHC1L, OTTHUMP00000018399, RCC1-like G exchanging factor RLG, chromosome condensation 1-like, regulator of chromosome condensation and BTB domain containing pro |
| Gene ID: | 1102, 105670, 290363 |
| NCBI Accession: | NP_001259 |

Application Details

| | |
|--------------------|---|
| Application Notes: | <p>Immunohistochemistry: Paraffin embedded Human Testis and Prostate. Recommended concentration: 5 µg/mL.</p> <p>Western Blot: Preliminary experiments gave an approx. 30 kDa band in Human Liver, Lung and Tonsil lysates after 1 µg/mL antibody staining. Please note that currently we cannot find an explanation in the literature for the band we observe given the calculat</p> <p>Peptide ELISA: antibody detection limit dilution 1:2000.</p> |
| Restrictions: | For Research Use only |

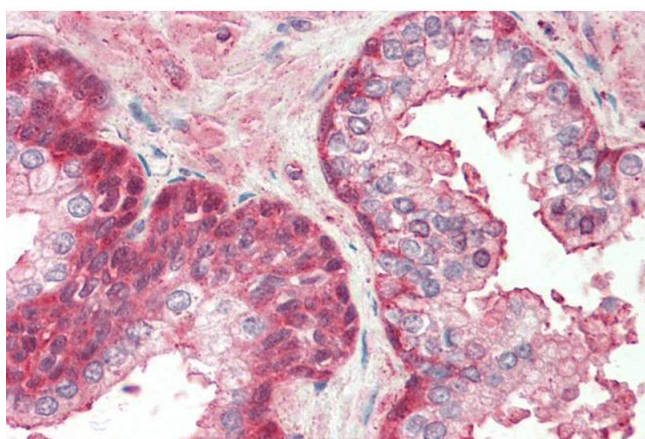
Handling

| | |
|--------------------|--|
| Format: | Liquid |
| Concentration: | 0.5 mg/mL |
| Buffer: | Supplied at 0.5 mg/mL in Tris saline, 0.02 % sodium azide, pH 7.3 with 0.5 % bovine serum albumin. |
| Preservative: | Sodium azide |
| Precaution of Use: | This product contains Sodium azide: a POISONOUS AND HAZARDOUS SUBSTANCE which should be handled by trained staff only. |
| Handling Advice: | Minimize freezing and thawing. |
| Storage: | -20 °C |
| Storage Comment: | Aliquot and store at -20°C, with minimal freeze/thawing. A working aliquot may be refrigerated at 4°C for a few weeks and still remain viable. |



Immunohistochemistry

Image 1. ABIN570703 (5µg/ml) staining of paraffin embedded Human Testis. Steamed antigen retrieval with citrate buffer pH 6, AP-staining.



Immunohistochemistry

Image 2. ABIN570703 (5µg/ml) staining of paraffin embedded Human Prostate. Steamed antigen retrieval with citrate buffer pH 6, AP-staining.