

Datasheet for ABIN5707036
anti-MHC Class II antibody (Biotin)[Go to Product page](#)

1 Image

Overview

Quantity:	0.5 mg
Target:	MHC Class II (MHC2)
Reactivity:	Chicken
Host:	Mouse
Clonality:	Monoclonal
Conjugate:	This MHC Class II antibody is conjugated to Biotin
Application:	Flow Cytometry (FACS)

Product Details

Immunogen:	Unknown
Clone:	2G11
Isotype:	IgG1
Specificity:	Chicken/Pigeon/Caiman MHC Class II β -chain, Mr 30-42 kDa
Characteristics:	Mouse Anti-Chicken MHC Class II-BIOT

Target Details

Target:	MHC Class II (MHC2)
Alternative Name:	MHC Class II (MHC2 Products)

Application Details

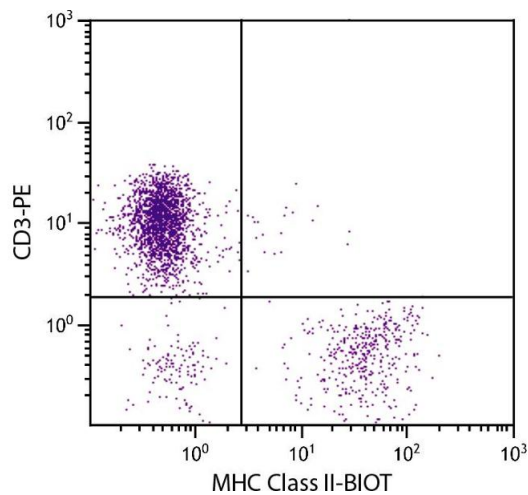
Application Notes:	<ul style="list-style-type: none">• Applications: FC - Quality tested , IHC-FS - Reported in literature , EM - Reported in literature , IP - Reported in literature , Purification - Reported in literature• Working Dilutions: Flow Cytometry Purified (UNLB) antibody 1 g/106 cells FITC, BIOT, and AF488 conjugates 1 g/106 cells PE conjugate 0.2 g/106 cells For flow cytometry, the suggested use of these reagents is in a final volume of 100 L
--------------------	--

Restrictions:	For Research Use only
---------------	-----------------------

Handling

Concentration:	0.5 mg/mL
Buffer:	0.5 mg in 1.0 mL of PBS/Sodium azide
Preservative:	Sodium azide
Precaution of Use:	This product contains Sodium azide: a POISONOUS AND HAZARDOUS SUBSTANCE which should be handled by trained staff only.
Storage:	4 °C
Storage Comment:	Store at 2-8°C

Images



Flow Cytometry

Image 1. Chicken peripheral blood lymphocytes were stained with Mouse Anti-Chicken MHC Class II-BIOT.