

Datasheet for ABIN570704
anti-PTMA antibody (C-Term)[Go to Product page](#)

1 Image

Overview

Quantity:	100 µg
Target:	PTMA
Binding Specificity:	C-Term
Reactivity:	Human
Host:	Goat
Clonality:	Polyclonal
Conjugate:	This PTMA antibody is un-conjugated
Application:	ELISA, Immunohistochemistry (IHC)

Product Details

Purpose:	PTMA
Immunogen:	Peptide with sequence C-DVDTKKQKTEDD, from the C Terminus of the protein sequence according to NP_001092755.1, NP_002814.3.
Sequence:	DVDTKKQKTD EDD
Isotype:	IgG
Specificity:	This antibody is expected to recognize both reported isoforms (NP_001092755.1, NP_002814.3).
Cross-Reactivity:	Dog, Human, Rat
Purification:	Purified from goat serum by ammonium sulphate precipitation followed by antigen affinity chromatography using the immunizing peptide.

Product Details

Grade: Verified

Target Details

Target: PTMA

Alternative Name: PTMA ([PTMA Products](#))

Background: PTMA, prothymosin, alpha, MGC104802, TMSA, gene sequence 28, prothymosin alpha protein, prothymosin, alpha (gene sequence 28), region containing prothymosin, alpha (gene sequence 28), prothymosin, alpha (gene sequence 28), prothymosin, alpha (gene sequence 28), prothymosin, alpha (gene sequence 28)

Gene ID: 5757, 500448

NCBI Accession: [NP_001092755](#), [NP_002814](#)

Application Details

Application Notes: Immunohistochemistry: Paraffin embedded Human Spleen. Recommended concentration: 3.75 µg/mL.
Western Blot: Preliminary experiments gave an approx. 38 kDa band in lysates of cell line A431 after 0.2 µg/mL antibody staining. Please note that currently we cannot find an explanation in the literature for the band we observe given the calculated size of the protein.
Peptide ELISA: antibody detection limit dilution 1:1000.

Restrictions: For Research Use only

Handling

Format: Liquid

Concentration: 0.5 mg/mL

Buffer: Supplied at 0.5 mg/mL in Tris saline, 0.02 % sodium azide, pH 7.3 with 0.5 % bovine serum albumin.

Preservative: Sodium azide

Precaution of Use: This product contains Sodium azide: a POISONOUS AND HAZARDOUS SUBSTANCE which should be handled by trained staff only.

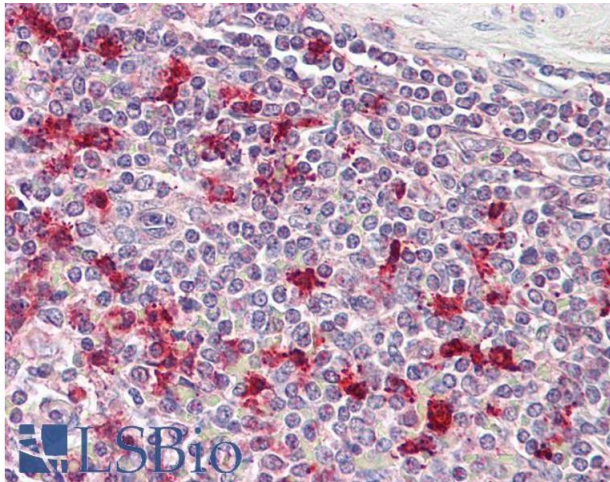
Handling Advice: Minimize freezing and thawing.

Storage: -20 °C

Handling

Storage Comment: Aliquot and store at -20°C, with minimal freeze/thawing. A working aliquot may be refrigerated at 4°C for a few weeks and still remain viable.

Images



Immunohistochemistry

Image 1. ABIN570704 (3.75µg/ml) staining of paraffin embedded Human Spleen. Steamed antigen retrieval with citrate buffer pH 6, AP-staining.