

Datasheet for ABIN570707
anti-E2F8 antibody (Internal Region)

3 Images

[Go to Product page](#)

Overview

Quantity:	100 µg
Target:	E2F8
Binding Specificity:	Internal Region
Reactivity:	Human
Host:	Goat
Clonality:	Polyclonal
Conjugate:	This E2F8 antibody is un-conjugated
Application:	ELISA, Immunofluorescence (IF), Flow Cytometry (FACS)

Product Details

Purpose:	E2F8
Immunogen:	Peptide with sequence C-KSIESDRRKINSAPS , from the internal region of the protein sequence according to NP_078956.2.
Sequence:	KSIESDRRKI NSAPS
Isotype:	IgG
Cross-Reactivity:	Cow, Human, Mouse
Purification:	Purified from goat serum by ammonium sulphate precipitation followed by antigen affinity chromatography using the immunizing peptide.
Grade:	Verified

Target Details

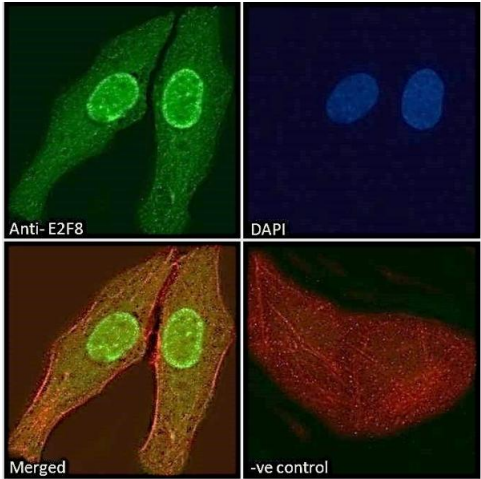
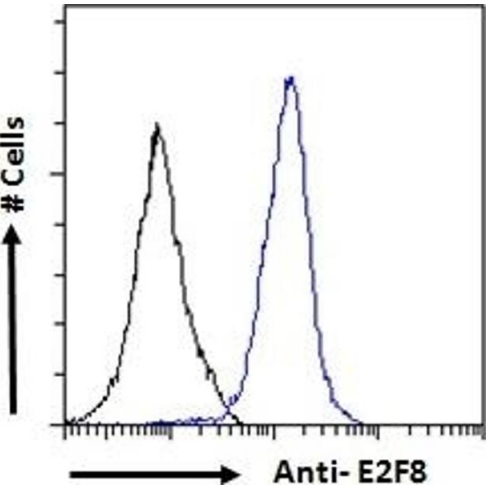
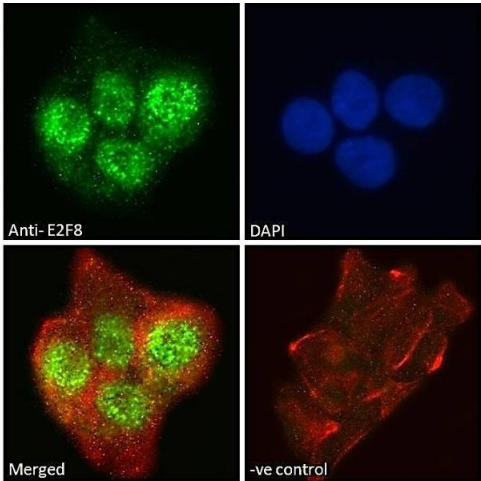
Target:	E2F8
Alternative Name:	E2F8 (E2F8 Products)
Background:	E2F8, E2F transcription factor 8, FLJ23311, E2F family member 8
Gene ID:	79733, 108961
NCBI Accession:	NP_078956

Application Details

Application Notes:	Western Blot: Preliminary testing showed a band at approx 80 kDa in Human K562 and Mouse Neuro2a cell lysate after 0.3 µg/mL antibody staining. Primary incubation 1 hour at room temperature. Peptide ELISA: antibody detection limit dilution 1:32000.
Comment:	Immunofluorescence: Strong expression of the protein seen in the nuclei and cytoplasm of A431 and U2OS cells. Recommended concentration: 10µg/ml. Flow Cytometry: Flow cytometric analysis of A431 cells. Recommended conc
Restrictions:	For Research Use only

Handling

Format:	Liquid
Concentration:	0.5 mg/mL
Buffer:	Supplied at 0.5 mg/mL in Tris saline, 0.02 % sodium azide, pH 7.3 with 0.5 % bovine serum albumin.
Preservative:	Sodium azide
Precaution of Use:	This product contains Sodium azide: a POISONOUS AND HAZARDOUS SUBSTANCE which should be handled by trained staff only.
Handling Advice:	Minimize freezing and thawing.
Storage:	-20 °C
Storage Comment:	Aliquot and store at -20°C, with minimal freeze/thawing. A working aliquot may be refrigerated at 4°C for a few weeks and still remain viable.



Immunofluorescence

Image 1. ABIN570707 Immunofluorescence analysis of paraformaldehyde fixed A431 cells, permeabilized with 0.15 % Triton. Primary incubation 1hr (10 µg/mL) followed by Alexa Fluor 488 secondary antibody (2 µg/mL), showing nuclear and cytoplasmic staining. Actin filaments

Flow Cytometry

Image 2. ABIN570707 Flow cytometric analysis of paraformaldehyde fixed A431 cells (blue line), permeabilized with 0.5 % Triton. Primary incubation 1hr (10 µg/mL) followed by Alexa Fluor 488 secondary antibody (1 µg/mL). IgG control: Unimmunized goat IgG (black line) fol

Immunofluorescence

Image 3. ABIN570707 Immunofluorescence analysis of paraformaldehyde fixed U2OS cells, permeabilized with 0.15 % Triton. Primary incubation 1hr (10 µg/mL) followed by Alexa Fluor 488 secondary antibody (2 µg/mL), showing nuclear and cytoplasmic staining. Actin filaments